



TEST REPORT

NINGBO GUANYI INT'L TRADE CO., LTD.

Technical Report: (3223)163-0398

Jul.11,2023

Date Received: Jun.12,2023

Page 1 of 13

NINGBO GUANYI INT'L TRADE CO., LTD.
20/F,NINGBO GLOBAL SHIPPING PLAZA,NO.269 NINGDONG
ROAD,NINGBO, CHINA

SAMPLE INFORMATION:

Sample Description:	CLASSIC PLAY KITCHEN	Sample Quantity:	N/A
Vendor:	NINGBO GUANYI INT'L TRADE CO., LTD.	Style No(s):	GYT22674
Manufacturer:	N/A	SKN/SKU No.:	N/A
Buyer:	N/A	PO No.:	N/A
Labeled Age Grade:	3+	Ref #:	N/A
Appropriate Age Grade:	N/A	Country of Origin:	N/A
Client Specified Age Grade:	OVER 3 YEARS OF AGE	Assortment No.:	N/A
Tested Age Grade:	OVER 3 YEARS OF AGE	Country of Destination:	N/A
UPC Code:	N/A	Color :	N/A

EXECUTIVE SUMMARY:

TEST REQUESTED	CONCLUSION
The mechanical and physical properties requirements of the tested subclauses of the European Standard, "Safety of toys", EN71: Part 1:2014+A1:2018, clauses 1-7.	PASS
The flammability requirements of the European Standard "Safety of Toys", EN 71: Part 2: 2020	PASS
Migration of Certain Elements - EN71-3:2019+A1:2021	PASS

Note: The sample is tested as "Over 3 years of age" per the client's request .

BVCPS (ZHEJIANG) GENERAL CONTACT INFORMATION FOR THIS REPORT

TELEPHONE NO. : 86-574-87091207 / 87091330
E-MAIL : allen.he@bureauveritas.com;yijuan.wang@bureauveritas.com

Bureau Veritas Testing Technical Service (Zhejiang) Co., Ltd

Seb wang
LAB Manager
(HARDLINE AND TOY DIVISION)

Kobe Chen
Chemical Supervisor

Bureau Veritas Testing Technical Service (Zhejiang) Co., Ltd
1F west of east, 7F east, 8F, Building 5
No.66 Guanyl Road, Ningbo, Zhejiang, China
Tel:86-574-87091333, Fax:86-574-87971038
website: cps@bureauveritas.com



This report is governed by, and incorporates by reference, the Conditions of Testing as posted at the date of issuance of this report at <http://www.bureauveritas.com/home/about-us/our-business/cps/about-us/terms-conditions/> and is intended for your exclusive use. Any copying or replication of this report to or for any other person or entity, or use of our name or trademark, is permitted only with our prior written permission. This report sets forth our findings solely with respect to the test samples identified herein. The results set forth in this report are not indicative or representative of the quality or characteristics of the lot from which a test sample was taken or any similar or identical product unless specifically and expressly noted. Our report includes all of the tests requested by you and the results thereof based upon the information that you provided to us. Measurement uncertainty is only provided upon request for accredited tests. Statements of conformity are based on simple acceptance criteria without taking measurement uncertainty into account, unless otherwise requested in writing. You have 60 days from date of issuance of this report to notify us of any material error or omission caused by our negligence or if you require measurement uncertainty; provided, however, that such notice shall be in writing and shall specifically address the issue you wish to raise. A failure to raise such issue within the prescribed time shall constitute your unqualified acceptance of the completeness of this report, the tests conducted and the correctness of the report contents.



**BUREAU
VERITAS**

NINGBO GUANYI INT'L TRADE CO., LTD.

Technical Report: **(3223)163-0398**

Jul. 11, 2023

Page 2 of 13

APPROPRIATE AGE GRADE DETERMINATION

The Appropriate Age Grade is determined with reference to the EN71: Part 1:2014+A1:2018, European Union Guidance Documents, CEN ISO/TR 8124-8:2016 Safety of toys - Part 8: Age determination guidelines and Age Determination Guidelines: Relating Children's Ages to Toy Characteristics and Play Behavior, September, 2002

Note : The most stringent age grade from the Labeled Age Grade and the Appropriate Age Grade will be used for testing.

Note : If the client does not specify an age grade for testing or request Bureau Veritas Consumer Products Services, Inc. to determine an appropriate age grade, the labeled age grade will be used for testing.

EXPLANATION OF THE ABBREVIATIONS FOR PART 1, 2

Symbol	Explanation
NM	The samples are NOT IN COMPLIANCE WITH the requirement of this Subclause
M	The samples are IN COMPLIANCE WITH the requirement of this Subclause
N/A	Not Applicable
NR	Not Requested
NE	Not Evaluated
NP	None Present
P	Present
R	Refer to Comment Section of this report

Symbol	Language Present	Symbol	Language Present	Symbol	Language Present
B	Belgian language	G	German language	PR	Portuguese language
D	Danish language	GR	Greek language	S	Spanish language
E	English language	H	Dutch language	SD	Swedish language
F	Finnish language	I	Italian language	SZ	Swiss language
FR	French language	N	Norwegian language		



**BUREAU
VERITAS**

NINGBO GUANYI INT'L TRADE CO., LTD.

Technical Report: **(3223)163-0398**

Jul.11,2023

Page 3 of 13

**MECHANICAL & PHYSICAL PROPERTIES
(EN 71: PART 1:2014+A1 :2018)**

Subclause	Requirement	Result
4.1	Material cleanliness	M
4.2	Assembly	M
4.3	Flexible plastic sheeting	N/A
4.4	Toy Bags	N/A
4.5	Glass	N/A
4.6	Expanding materials	N/A
4.7 & 7.6	Edges	M
4.8 & 7.6	Points and metallic wires	M
4.8e	Splinters	M
4.9	Protruding parts	M
4.10.1	Folding and sliding mechanisms	N/A
4.10.2	Driving mechanisms	N/A
4.10.3	Hinges	M
4.10.4	Springs	N/A
4.11	Mouth actuated toys and other toys intended to be put in the mouth	N/A
4.12 & 7.3	Balloons	N/A
4.13 & 7.9	Cord of toy kites and other flying toys	N/A
4.14.1	Toys which a child can enter	N/A
4.14.2 & 7.8	Masks and helmets	N/A
4.15.1	Toys propelled by child	
4.15.1.2 & 7.10.1 & 7.10.2 & 7.10.3 & 7.10.4 & 7.16	Toys propelled by child – Instructions for use	N/A
4.15.1.3	Toys propelled by child – Strength	N/A
4.15.1.4	Toys propelled by child – Stability	N/A
4.15.1.5	Toys propelled by child – Braking	N/A
4.15.1.6	Toys propelled by child - Transmission	N/A
4.15.1.7	Toys propelled by child – insertion mark	N/A
4.15.1.8	Electrically-driven ride-on toys	N/A
4.15.2	Toy bicycles	
4.15.2.2 & 7.15	Toy bicycles – Warnings and instructions for use	N/A
4.15.2.3	Toy bicycles – Braking	N/A
4.15.3 & 7.16 & 7.19	Rocking horses and similar toys	N/A
4.15.4 & 7.16	Toys not propelled by child	N/A
4.15.5 & 7.18	Toy scooters	N/A
4.16	Heavy immobile toys	M
4.17.2	All projectiles	N/A
4.17.3 & 7.7	Projectile toys with stored energy	N/A
4.17.4 & 7.26	Certain projectiles toys without stored energy	N/A
4.18 & 7.4	Aquatic toys and inflatable toys	N/A
4.19 & 7.13 & 7.14	Percussion caps	N/A
*4.20.2.1- 4.20.2.8, 4.20.2.10, 4.20.2.12	Acoustics	M



**BUREAU
VERITAS**

NINGBO GUANYI INT'L TRADE CO., LTD.

Technical Report: **(3223)163-0398**

Jul.11,2023

Page 4 of 13

**MECHANICAL & PHYSICAL PROPERTIES
(EN 71: PART 1:2014+A1 :2018)**

Subclause	Requirement	Result
4.20.2.9, 4.20.2.11 & 7.14	Acoustics – percussion toys & cap-firing toys	N/A
4.21	Toys containing a non-electrical heat source	N/A
4.22 & 7.2	Small balls	N/A
4.23	Magnet	
4.23.2 a, b & c	Toy other than magnetic / electrical experimental sets intended for children over 8 years	M
4.23.3 & 7.20	Magnetic / electrical experimental sets intended for children over 8 years	N/A
4.24	Yo-yo ball	N/A
4.25	Toys attached to food	N/A
4.26	Toy Disguise Costumes	N/A
4.27.1	Flying toys – General	N/A
4.27.2 & 7.25.1	Rotors and propellers on flying toys	N/A
4.27.3 & 7.25.2	Rotors and propellers on remote controlled flying toys	N/A
	FOR TOYS INTENDED FOR CHILDREN UNDER 36 MONTHS	
5.1	General	N/A
5.1a	Small parts – as received	N/A
5.1b	Small parts, sharp points, sharp edges – after tests	N/A
5.1c	Cross section <2mm metal points & wires	N/A
5.1e	Toys contain glue	N/A
5.1f	Casing of toys	N/A
5.2	Fillings, coverings and seams	N/A
5.3	Adhesion of plastic sheeting	N/A
5.4.2	Cords and chains in toys intended for children under 18 months	N/A
5.4.3 & 7.22	Cords and chains in toys intended for children of 18 months or over but under 36 months	N/A
5.4.4	Fixed loops, tangled loops and nooses	N/A
5.4.5	Cords and chains on pull along toys	N/A
5.4.6 & 7.21	Electrical cables	N/A
5.4.7	Cross-sectional dimension of certain cords	N/A
5.4.8	Self-retracting cords	N/A
5.4.9 & 7.11 & 7.23	Toys attached to or intended to be strung across a cradle, cot or perambulator	N/A
5.5 & 7.12	Liquid filled toys	N/A
5.6	Electrically driven toys	N/A
5.7	Glass and porcelain	N/A
5.8	Shape and size	N/A
5.9 & 7.17	Monofilament fibres	N/A
5.10	Small balls	N/A
5.11	Play figures	N/A
5.12	Hemispheric shaped toys	N/A
5.13	Suction cups	N/A
5.14	Straps intended to be worn fully or partially around the neck	N/A
5.15 & 7.24	Sledges with cords for pulling	N/A
6	Packaging	N/A



**MECHANICAL & PHYSICAL PROPERTIES
(EN 71: PART 1:2014+A1 :2018)**

Subclause	Requirement	Result
WARNINGS, INSTRUCTIONS FOR USE		
7.1	General	M
7.2	Toys not intended for children under 36 months	M
7.5	Functional toys	NA

REQUIREMENTS & TEST METHODS CROSS REFERENCE TABLE FOR PART 1

Sub-clause	Test Method	Sub-clause	Test Method	Sub-clause	Test Method	Sub-clause	Test Method
4.3	8.25.1	4.14.2	8.3, 8.4.2.1, 8.5, 8.7, 8.8, 8.11, 8.12	4.17.3	8.24.1	5.3	8.4.2.1, 8.25
4.5	8.5, 8.7, 8.11, 8.12	4.15.1.3	8.11, 8.12, 8.21, 8.22	4.17.4	8.24.2	5.4	8.20, 8.36, 8.38, 8.39, 8.40
4.6	8.2, 8.3, 8.4.2.1, 8.5, 8.7, 8.8, 8.14	4.15.1.4	8.23.1	4.18	8.2, 8.3, 8.4.2.1	5.5	8.15
4.7	8.11	4.15.1.5	8.26.1	4.20	8.28	5.6	8.29
4.8	8.12, 8.13	4.15.1.8	8.29	4.21	8.30	5.8	8.16
4.9	8.4.2.3, 8.11, 8.12	4.15.2.4	8.26.2	4.22	8.3, 8.4.2.1, 8.5, 8.6, 8.7, 8.8, 8.32	5.10	8.3, 8.4.2.1, 8.5, 8.6, 8.7, 8.8, 8.9, 8.32
4.10.1	8.18.2, 8.18.3	4.15.3	8.21, 8.23.1	4.23	8.2, 8.3, 8.4.2.1, 8.4.2.2, 8.5, 8.6, 8.7, 8.8, 8.34, 8.35	5.11	8.33
4.10.2	8.5, 8.6, 8.7, 8.11, 8.12	4.15.4	8.21, 8.23.1	4.24	8.37	5.12	8.3, 8.4.2.1, 8.5, 8.6, 8.7, 8.8, 8.9,
4.11	8.2, 8.3, 8.4.2.1, 8.9, 8.17	4.15.5	8.11, 8.12, 8.21, 8.22, 8.26.3, 8.27	4.25	8.2, 8.3, 8.4.2.1, 8.5, 8.7, 8.8, 8.32.1	5.13	8.3, 8.4.2.1, 8.5, 8.7, 8.8, 8.32
4.13	8.19	4.16	8.23.2	5.1	8.2, 8.3, 8.4.2.1, 8.5, 8.7, 8.8, 8.9, 8.11, 8.12		
4.14.1	8.31.1, 8.31.2	4.17.1	8.4.2.3				



**BUREAU
VERITAS**

NINGBO GUANYI INT'L TRADE CO., LTD.

Technical Report: **(3223)163-0398**

Jul. 11, 2023

Page 6 of 13

FLAMMABILITY (EN 71 PART 2: 2020)

Subclause	Requirement	Result
4.1	Cellulose nitrate	NP
4.1	Highly flammable solids	NP
4.1	Surface flash on a piled surface	N/A
4.1	Flammable gases	N/A
4.1	Extremely flammable liquids, highly flammable liquids, flammable liquids and flammable gels	N/A
4.2	Toys to be worn on the head	N/A
4.3	Toy disguise costumes and toys intended to be worn by child in play	N/A
4.3	warning on product and packaging (10 - 30 mm/s)	N/A
4.4	Toys intended to be entered by a child	N/A
4.4	warning on product and packaging (10 – 30 mm/s)	N/A
4.5	Soft-filled toys	N/A

REQUIREMENTS & TEST METHODS CROSS REFERENCE TABLE FOR PART 2

Sub-clause	Test Method	Sub-clause	Test Method	Sub-clause	Test Method	Sub-clause	Test Method
4.2.2	5.2	4.2.4	5.3	4.3	5.4	4.5	5.5
4.2.3	5.3	4.2.5	5.4	4.4	5.4	-	-



Tested Component(s) Breakdown List

Test Item	Description	Location	Style
1	Multicolor paper	-	-
2	White coating	-	-
3	Blue coating	-	-
4	Light brown coating	-	-
5	Brown coating	-	-
6	Transparent coating	-	-
7	Beige wood	-	-
8	Light brown wood	-	-
9	Brown MDF	-	-
10	Transparent plastic	Combination case	-
11	Brown frosted plastic	Combination case	-
12	White translucent plastic	Combination case	-
13	Grey plastic	Range hood	-
14	Deep red plastic	Range hood	-
15	Transparent plastic	Light	-
16	White plastic	Switch box	-
17	Brown plastic	Knob	-
18	Cement grey plastic	faucet	-
19	Light grey plastic	Pan	-
20	Red plastic	Gas stove	-
21	Black/ red/ silver plastic	Gas stove	-
22	Brown plastic	Knob	-
23	Red plastic	Clock	-
24	Green plastic	Clock	-
25	Translucent plastic	Clock	-
26	Green plastic	Garbage recycling	-
27	Deep green plastic	Garbage recycling inner	-
28	Grey plastic	Tray	-
29	Transparent plastic	Cup	-
30	Beige plastic	-	-

Migration of Certain Elements - EN71-3:2019+A1:2021

Test Method: European Standard EN71-3:2019+A1:2021

Analyte	Limit: (mg/kg)	Result (mg/kg)				
		Sample ID				
	Type III	1	2	3	4	5
Boron (B)	15000	<1500	<1500	<1500	<1500	<1500



**BUREAU
VERITAS**

NINGBO GUANYI INT'L TRADE CO., LTD.

Technical Report: **(3223)163-0398**

Jul.11,2023

Page 8 of 13

Aluminium (Al)	28130	<2813	<2813	<2813	<2813	<2813
Chromium III (Cr III)	460	<46	<46	<46	<46	<46
Chromium VI (Cr VI)	0.053	<0.02	<0.02	<0.02	<0.02	<0.02
Manganese (Mn)	15000	<1500	<1500	<1500	<1500	<1500
Cobalt (Co)	130	<13	<13	<13	<13	<13
Nickel (Ni)	930	<93	<93	<93	<93	<93
Copper (Cu)	7700	<770	<770	<770	<770	<770
Zinc (Zn)	46000	<4600	<4600	<4600	<4600	<4600
Arsenic (As)	47	<4.7	<4.7	<4.7	<4.7	<4.7
Selenium (Se)	460	<46	<46	<46	<46	<46
Strontium (Sr)	56000	<5600	<5600	<5600	<5600	<5600
Cadmium (Cd)	17	<1.7	<1.7	<1.7	<1.7	<1.7
Tin (Sn)	180000	<18000	<18000	<18000	<18000	<18000
Organic tin	12	<1.2	<1.2	<1.2	<1.2	<1.2
Antimony (Sb)	560	<56	<56	<56	<56	<56
Barium (Ba)	18750	<1875	<1875	<1875	<1875	<1875
Mercury (Hg)	94	<9.4	<9.4	<9.4	<9.4	<9.4
Lead (Pb)	23	<2.3	<2.3	<2.3	<2.3	<2.3
Conclusion		PASS	PASS	PASS	PASS	PASS

Analyte	Limit: (mg/kg)	Result (mg/kg)				
		Sample ID				
		Type III	6	7	8	9
Boron (B)	15000	<1500	<1500	<1500	<1500	<1500
Aluminium (Al)	28130	<2813	<2813	<2813	<2813	<2813
Chromium III (Cr III)	460	<46	<46	<46	<46	<46
Chromium VI (Cr VI)	0.053	<0.02	<0.02	<0.02	<0.02	<0.02
Manganese (Mn)	15000	<1500	<1500	<1500	<1500	<1500
Cobalt (Co)	130	<13	<13	<13	<13	<13
Nickel (Ni)	930	<93	<93	<93	<93	<93
Copper (Cu)	7700	<770	<770	<770	<770	<770
Zinc (Zn)	46000	<4600	<4600	<4600	<4600	<4600
Arsenic (As)	47	<4.7	<4.7	<4.7	<4.7	<4.7
Selenium (Se)	460	<46	<46	<46	<46	<46
Strontium (Sr)	56000	<5600	<5600	<5600	<5600	<5600
Cadmium (Cd)	17	<1.7	<1.7	<1.7	<1.7	<1.7
Tin (Sn)	180000	<18000	<18000	<18000	<18000	<18000
Organic tin	12	<1.2	<1.2	<1.2	<1.2	<1.2
Antimony (Sb)	560	<56	<56	<56	<56	<56
Barium (Ba)	18750	<1875	<1875	<1875	<1875	<1875
Mercury (Hg)	94	<9.4	<9.4	<9.4	<9.4	<9.4
Lead (Pb)	23	<2.3	<2.3	<2.3	<2.3	<2.3
Conclusion		PASS	PASS	PASS	PASS	PASS

Analyte	Limit:	Result (mg/kg)
---------	--------	----------------



**BUREAU
VERITAS**

NINGBO GUANYI INT'L TRADE CO., LTD.

Technical Report: **(3223)163-0398**

Jul.11,2023

Page 9 of 13

	(mg/kg)	Sample ID				
	Type III	11	12	13	14	15
Boron (B)	15000	<1500	<1500	<1500	<1500	<1500
Aluminium (Al)	28130	<2813	<2813	<2813	<2813	<2813
Chromium III (Cr III)	460	<46	<46	<46	<46	<46
Chromium VI (Cr VI)	0.053	<0.02	<0.02	<0.02	<0.02	<0.02
Manganese (Mn)	15000	<1500	<1500	<1500	<1500	<1500
Cobalt (Co)	130	<13	<13	<13	<13	<13
Nickel (Ni)	930	<93	<93	<93	<93	<93
Copper (Cu)	7700	<770	<770	<770	<770	<770
Zinc (Zn)	46000	<4600	<4600	<4600	<4600	<4600
Arsenic (As)	47	<4.7	<4.7	<4.7	<4.7	<4.7
Selenium (Se)	460	<46	<46	<46	<46	<46
Strontium (Sr)	56000	<5600	<5600	<5600	<5600	<5600
Cadmium (Cd)	17	<1.7	<1.7	<1.7	<1.7	<1.7
Tin (Sn)	180000	<18000	<18000	<18000	<18000	<18000
Organic tin	12	<1.2	<1.2	<1.2	<1.2	<1.2
Antimony (Sb)	560	<56	<56	<56	<56	<56
Barium (Ba)	18750	<1875	<1875	<1875	<1875	<1875
Mercury (Hg)	94	<9.4	<9.4	<9.4	<9.4	<9.4
Lead (Pb)	23	<2.3	<2.3	<2.3	<2.3	<2.3
Conclusion		PASS	PASS	PASS	PASS	PASS

Analyte	Limit: (mg/kg)	Result (mg/kg)				
		Sample ID				
	Type III	16	17	18	19	20
Boron (B)	15000	<1500	<1500	<1500	<1500	<1500
Aluminium (Al)	28130	<2813	<2813	<2813	<2813	<2813
Chromium III (Cr III)	460	<46	<46	<46	<46	<46
Chromium VI (Cr VI)	0.053	<0.02	<0.02	<0.02	<0.02	<0.02
Manganese (Mn)	15000	<1500	<1500	<1500	<1500	<1500
Cobalt (Co)	130	<13	<13	<13	<13	<13
Nickel (Ni)	930	<93	<93	<93	<93	<93
Copper (Cu)	7700	<770	<770	<770	<770	<770
Zinc (Zn)	46000	<4600	<4600	<4600	<4600	<4600
Arsenic (As)	47	<4.7	<4.7	<4.7	<4.7	<4.7
Selenium (Se)	460	<46	<46	<46	<46	<46
Strontium (Sr)	56000	<5600	<5600	<5600	<5600	<5600
Cadmium (Cd)	17	<1.7	<1.7	<1.7	<1.7	<1.7
Tin (Sn)	180000	<18000	<18000	<18000	<18000	<18000
Organic tin	12	<1.2	<1.2	<1.2	<1.2	<1.2
Antimony (Sb)	560	<56	<56	<56	<56	<56
Barium (Ba)	18750	<1875	<1875	<1875	<1875	<1875
Mercury (Hg)	94	<9.4	<9.4	<9.4	<9.4	<9.4



**BUREAU
VERITAS**

NINGBO GUANYI INT'L TRADE CO., LTD.

Technical Report: **(3223)163-0398**

Jul.11,2023

Page 10 of 13

Lead (Pb)	23	<2.3	<2.3	<2.3	<2.3	<2.3
Conclusion		PASS	PASS	PASS	PASS	PASS

Analyte	Limit: (mg/kg)	Result (mg/kg)				
		Sample ID				
		Type III	21	22	23	24
Boron (B)	15000	<1500	<1500	<1500	<1500	<1500
Aluminium (Al)	28130	<2813	<2813	<2813	<2813	<2813
Chromium III (Cr III)	460	<46	<46	<46	<46	<46
Chromium VI (Cr VI)	0.053	<0.02	<0.02	<0.02	<0.02	<0.02
Manganese (Mn)	15000	<1500	<1500	<1500	<1500	<1500
Cobalt (Co)	130	<13	<13	<13	<13	<13
Nickel (Ni)	930	<93	<93	<93	<93	<93
Copper (Cu)	7700	<770	<770	<770	<770	<770
Zinc (Zn)	46000	<4600	<4600	<4600	<4600	<4600
Arsenic (As)	47	<4.7	<4.7	<4.7	<4.7	<4.7
Selenium (Se)	460	<46	<46	<46	<46	<46
Strontium (Sr)	56000	<5600	<5600	<5600	<5600	<5600
Cadmium (Cd)	17	<1.7	<1.7	<1.7	<1.7	<1.7
Tin (Sn)	180000	<18000	<18000	<18000	<18000	<18000
Organic tin	12	<1.2	<1.2	<1.2	<1.2	<1.2
Antimony (Sb)	560	<56	<56	<56	<56	<56
Barium (Ba)	18750	<1875	<1875	<1875	<1875	<1875
Mercury (Hg)	94	<9.4	<9.4	<9.4	<9.4	<9.4
Lead (Pb)	23	<2.3	<2.3	<2.3	<2.3	<2.3
Conclusion		PASS	PASS	PASS	PASS	PASS

Analyte	Limit: (mg/kg)	Result (mg/kg)				
		Sample ID				
		Type III	26	27	28	29
Boron (B)	15000	<1500	<1500	<1500	<1500	<1500
Aluminium (Al)	28130	<2813	<2813	<2813	<2813	<2813
Chromium III (Cr III)	460	<46	<46	<46	<46	<46
Chromium VI (Cr VI)	0.053	<0.02	<0.02	<0.02	<0.02	<0.02
Manganese (Mn)	15000	<1500	<1500	<1500	<1500	<1500
Cobalt (Co)	130	<13	<13	<13	<13	<13
Nickel (Ni)	930	<93	<93	<93	<93	<93
Copper (Cu)	7700	<770	<770	<770	<770	<770
Zinc (Zn)	46000	<4600	<4600	<4600	<4600	<4600
Arsenic (As)	47	<4.7	<4.7	<4.7	<4.7	<4.7
Selenium (Se)	460	<46	<46	<46	<46	<46
Strontium (Sr)	56000	<5600	<5600	<5600	<5600	<5600
Cadmium (Cd)	17	<1.7	<1.7	<1.7	<1.7	<1.7
Tin (Sn)	180000	<18000	<18000	<18000	<18000	<18000
Organic tin	12	<1.2	<1.2	<1.2	<1.2	<1.2



**BUREAU
VERITAS**

NINGBO GUANYI INT'L TRADE CO., LTD.

Technical Report: **(3223)163-0398**

Jul.11,2023

Page 11 of 13

Antimony (Sb)	560	<56	<56	<56	<56	<56
Barium (Ba)	18750	<1875	<1875	<1875	<1875	<1875
Mercury (Hg)	94	<9.4	<9.4	<9.4	<9.4	<9.4
Lead (Pb)	23	<2.3	<2.3	<2.3	<2.3	<2.3
Conclusion		PASS	PASS	PASS	PASS	PASS

Note / Key:

Req. = Requirement mg/kg = milligram per kilogram

Remark:

- Test Item(s) was (were) tested according to European Standard EN 71-3: 2019 + A1: 2021, Section 8.
- Results of Cr III and Cr VI were reported as sum of soluble chromium content unless further verified.
- *Result(s) of organic tin was (were) calculated by assuming the soluble tin content was wholly contributed from tributyltin (TBT) cation unless further specified.
- The pH measured shall be reported after migration if it was outside the range of 1.1 to 1.3.
- European Standard EN 71 Part 3: 2019 is currently harmonized under European Parliament and Council Directive 2009/48/EC and will be superseded when European Standard EN 71 Part 3: 2019 + A1: 2021 is harmonized.
- The received sample(s) contained accessible component(s) of less than 10 milligrams by weight on one single sample, therefore such component(s) was (were) not subject to migration of certain elements of European Standard, "Safety of Toys, EN 71 Part 3: 2019 + A1: 2021", as specified in Section 7.1 - Selection of test portions.
- * denotes as result(s) was (were) verified by :
For organic tin content - Test method with reference to European Standard EN 71-3: 2019 + A1: 2021 and reported as tributyltin (TBT) cation.
For Cr VI content - In house ion chromatography analysis.



**BUREAU
VERITAS**

NINGBO GUANYI INT'L TRADE CO., LTD.

Technical Report: **(3223)163-0398**

Jul. 11, 2023

Page 12 of 13

SAMPLE REFERENCE PHOTO:





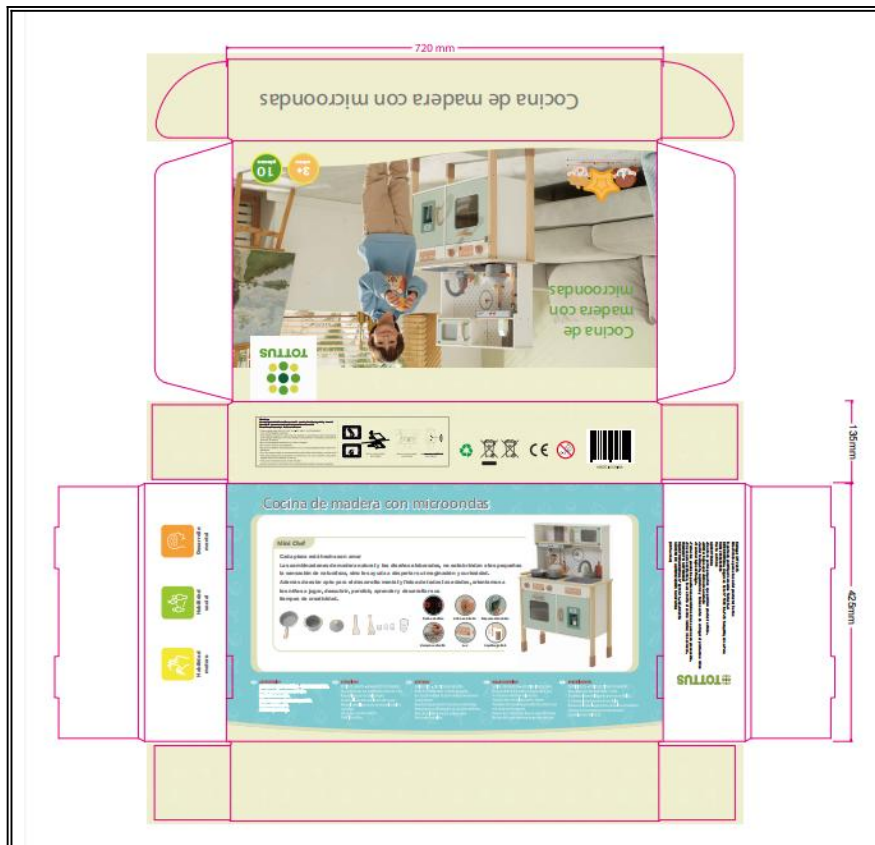
**BUREAU
VERITAS**

NINGBO GUANYI INT'L TRADE CO., LTD.

Technical Report: **(3223)163-0398**

Jul. 11, 2023

Page 13 of 13



-- END OF REPORT --