



# TEST REPORT

**Applicant** : SHENZHEN DAYBETTER OPTO-ELECTRONICS CO., LTD  
**Address** : Floor 4, Building 2, Antuoshan High-tech Park, No.59 Xinsha Road, Shajing Town, Baoan District, Shenzhen

**Report on the submitted samples said to be:**

**Sample Name(s)** : LED Strip light suit

**Trade Mark** : N/A

**Part No.** : D50121044R, D50121524W-TY, D50121524B, D50127544R, D50127524W-TY, D50121024W-TY, D50111524B, RGB501275OTC04APR, RGB501275OTCUKVC04APR, RGB501210OCT04APR, RGB501210OCTUKVC04APR, FLSLWU53602RGBUS04APR, FLSLWU53602RGBUSUKVC04APR, FLSL501210WIFITY04APR, FLSL501210WIFITYUKVC04APR, FLSL501215WIFITY02W04APR, FLSL501215WIFITY02WUKVC04APR, FLSLWU5325RGBUS04APR, FLSLWU5325RGBUSUKVC04APR, FLSLWU5350RGBUS04APR, FLSLWU5350RGBUSUKVC04APR

**Sample Received Date** : July 13, 2022

**Testing Period** : July 13, 2022 ~July 15, 2022

**Date of Report** : July 15, 2022

**Results** : Please refer to next page(s).

TEST REQUEST	CONCLUSION
As specified by client, to determine Organotin Content according to Annex XVII Item 20 of the REACH Regulation (EC) No.1907/2006.	PASS

Signed for and on behalf of LCS

Young/Laboratory Manager



**Tested part(s):**

- |                                  |                                    |
|----------------------------------|------------------------------------|
| (1) White plastic skin           | (22) Brown plastic diode           |
| (2) White plastic groove         | (23) Black body                    |
| (3) Orange plastic tape          | (24) Green PCB board               |
| (4) Translucent plastic sticker  | (25) Black body                    |
| (5) Black plastic secondary tube | (26) White plastic groove          |
| (6) White plastic groove         | (27) Silver plastic label          |
| (7) White plastic shell          | (28) Black body                    |
| (8) Silver plastic label         | (29) Black plastic diode           |
| (9) White plastic shell          | (30) White plastic sticker         |
| (10) White plastic skin          | (31) Transparent plastic LED light |
| (11) White thread skin           | (32) Green PCB board               |
| (12) White plastic skin          | (33) Black body                    |
| (13) Black thread skin           | (34) Black plastic housing         |
| (14) Blue thread skin            | (35) Transparent plastic sticker   |
| (15) Red thread skin             | (36) Black plastic stand           |
| (16) White plastic skin          | (37) Black plastic housing         |
| (17) Black thread skin           | (38) White plastic sticker         |
| (18) Green thread skin           | (39) Black body                    |
| (19) Orange thread skin          | (40) Transparent plastic LED light |
| (20) Blue thread skin            | (41) Black plastic skin            |
| (21) Black plastic transistor    | (42) Black plastic pins            |



Shenzhen LCS Compliance Testing Laboratory Ltd.

Add: F&G, 23/F, Technology Building, Quanzhi Science and Technology Innovation Park, Industrial Building, Maozhoushan Industrial Park, Houting, Shajing Street, Bao'an District, Shenzhen, Guangdong, China

Tel: +(86) 0755-82591330 | E-mail: webmaster@lcs-cert.com | Web: www.lcs-cert.com

Scan code to check authenticity

**Test Result(s)**

Test method: With reference to method ISO/TS 16179:2012, analysis was performed by GC-MS.

Test Item(s)	MDL (mg/kg)	Test Result(s) (mg/kg)	Limit (mg/kg)
		(1+2+3)	
Tributyltin (TBT) compounds by weight of tin	5	N.D.	1000
Triphenyltin (TPT) compounds by weight of tin	5	N.D.	1000
Dibutyltin (DBT) compounds by weight of tin	5	N.D.	1000
Dioctyltin (DOT) compounds by weight of tin	5	N.D.	1000

Test Item(s)	MDL (mg/kg)	Test Result(s) (mg/kg)	Limit (mg/kg)
		(4+5+6)	
Tributyltin (TBT) compounds by weight of tin	5	N.D.	1000
Triphenyltin (TPT) compounds by weight of tin	5	N.D.	1000
Dibutyltin (DBT) compounds by weight of tin	5	N.D.	1000
Dioctyltin (DOT) compounds by weight of tin	5	N.D.	1000

Test Item(s)	MDL (mg/kg)	Test Result(s) (mg/kg)	Limit (mg/kg)
		(7+8+9)	
Tributyltin (TBT) compounds by weight of tin	5	N.D.	1000
Triphenyltin (TPT) compounds by weight of tin	5	N.D.	1000
Dibutyltin (DBT) compounds by weight of tin	5	N.D.	1000
Dioctyltin (DOT) compounds by weight of tin	5	N.D.	1000



Shenzhen LCS Compliance Testing Laboratory Ltd.

Add: F&G, 23/F, Technology Building, Quanzhi Science and Technology Innovation Park, Industrial Building,  
Maozhoushan Industrial Park, Houting, Shajing Street, Bao'an District, Shenzhen, Guangdong, China

Tel: +(86) 0755-82591330 | E-mail: webmaster@lcs-cert.com | Web: www.lcs-cert.com

Scan code to check authenticity



Test Item(s)	MDL (mg/kg)	Test Result(s) (mg/kg)	Limit (mg/kg)
		(10+11+12)	
Tributyltin (TBT) compounds by weight of tin	5	N.D.	1000
Triphenyltin (TPT) compounds by weight of tin	5	N.D.	1000
Dibutyltin (DBT) compounds by weight of tin	5	N.D.	1000
Diocetyl tin (DOT) compounds by weight of tin	5	N.D.	1000

Test Item(s)	MDL (mg/kg)	Test Result(s) (mg/kg)	Limit (mg/kg)
		(13+14+15)	
Tributyltin (TBT) compounds by weight of tin	5	N.D.	1000
Triphenyltin (TPT) compounds by weight of tin	5	N.D.	1000
Dibutyltin (DBT) compounds by weight of tin	5	N.D.	1000
Diocetyl tin (DOT) compounds by weight of tin	5	N.D.	1000

Test Item(s)	MDL (mg/kg)	Test Result(s) (mg/kg)	Limit (mg/kg)
		(16+17+18)	
Tributyltin (TBT) compounds by weight of tin	5	N.D.	1000
Triphenyltin (TPT) compounds by weight of tin	5	N.D.	1000
Dibutyltin (DBT) compounds by weight of tin	5	N.D.	1000
Diocetyl tin (DOT) compounds by weight of tin	5	N.D.	1000

Test Item(s)	MDL (mg/kg)	Test Result(s) (mg/kg)	Limit (mg/kg)
		(19+20+21)	
Tributyltin (TBT) compounds by weight of tin	5	N.D.	1000
Triphenyltin (TPT) compounds by weight of tin	5	N.D.	1000
Dibutyltin (DBT) compounds by weight of tin	5	N.D.	1000
Diocetyl tin (DOT) compounds by weight of tin	5	N.D.	1000



Shenzhen LCS Compliance Testing Laboratory Ltd.

Add: F&G, 23/F, Technology Building, Quanzhi Science and Technology Innovation Park, Industrial Building,  
Maozhoushan Industrial Park, Houting, Shajing Street, Bao'an District, Shenzhen, Guangdong, China

Tel: +(86) 0755-82591330 | E-mail: webmaster@lcs-cert.com | Web: www.lcs-cert.com

Scan code to check authenticity



Test Item(s)	MDL (mg/kg)	Test Result(s) (mg/kg)	Limit (mg/kg)
		(22+23+24)	
Tributyltin (TBT) compounds by weight of tin	5	N.D.	1000
Triphenyltin (TPT) compounds by weight of tin	5	N.D.	1000
Dibutyltin (DBT) compounds by weight of tin	5	N.D.	1000
Diocetyl tin (DOT) compounds by weight of tin	5	N.D.	1000

Test Item(s)	MDL (mg/kg)	Test Result(s) (mg/kg)	Limit (mg/kg)
		(25+26+27)	
Tributyltin (TBT) compounds by weight of tin	5	N.D.	1000
Triphenyltin (TPT) compounds by weight of tin	5	N.D.	1000
Dibutyltin (DBT) compounds by weight of tin	5	N.D.	1000
Diocetyl tin (DOT) compounds by weight of tin	5	N.D.	1000

Test Item(s)	MDL (mg/kg)	Test Result(s) (mg/kg)	Limit (mg/kg)
		(28+29+30)	
Tributyltin (TBT) compounds by weight of tin	5	N.D.	1000
Triphenyltin (TPT) compounds by weight of tin	5	N.D.	1000
Dibutyltin (DBT) compounds by weight of tin	5	N.D.	1000
Diocetyl tin (DOT) compounds by weight of tin	5	N.D.	1000

Test Item(s)	MDL (mg/kg)	Test Result(s) (mg/kg)	Limit (mg/kg)
		(31+32+33)	
Tributyltin (TBT) compounds by weight of tin	5	N.D.	1000
Triphenyltin (TPT) compounds by weight of tin	5	N.D.	1000
Dibutyltin (DBT) compounds by weight of tin	5	N.D.	1000
Diocetyl tin (DOT) compounds by weight of tin	5	N.D.	1000



Shenzhen LCS Compliance Testing Laboratory Ltd.

Add: F&G, 23/F, Technology Building, Quanzhi Science and Technology Innovation Park, Industrial Building,  
Maozhoushan Industrial Park, Houting, Shajing Street, Bao'an District, Shenzhen, Guangdong, China

Tel: +(86) 0755-82591330 | E-mail: webmaster@lcs-cert.com | Web: www.lcs-cert.com

Scan code to check authenticity



Test Item(s)	MDL (mg/kg)	Test Result(s) (mg/kg)	Limit (mg/kg)
		(34+35+36)	
Tributyltin (TBT) compounds by weight of tin	5	N.D.	1000
Triphenyltin (TPT) compounds by weight of tin	5	N.D.	1000
Dibutyltin (DBT) compounds by weight of tin	5	N.D.	1000
Dioctyltin (DOT) compounds by weight of tin	5	N.D.	1000

Test Item(s)	MDL (mg/kg)	Test Result(s) (mg/kg)	Limit (mg/kg)
		(37+38+39)	
Tributyltin (TBT) compounds by weight of tin	5	N.D.	1000
Triphenyltin (TPT) compounds by weight of tin	5	N.D.	1000
Dibutyltin (DBT) compounds by weight of tin	5	N.D.	1000
Dioctyltin (DOT) compounds by weight of tin	5	N.D.	1000

Test Item(s)	MDL (mg/kg)	Test Result(s) (mg/kg)	Limit (mg/kg)
		(40+41+42)	
Tributyltin (TBT) compounds by weight of tin	5	N.D.	1000
Triphenyltin (TPT) compounds by weight of tin	5	N.D.	1000
Dibutyltin (DBT) compounds by weight of tin	5	N.D.	1000
Dioctyltin (DOT) compounds by weight of tin	5	N.D.	1000

Note:

- MDL = Method Detection Limit
- N.D. = Not Detected (<MDL)
- mg/kg = milligrams per kilogram



Shenzhen LCS Compliance Testing Laboratory Ltd.

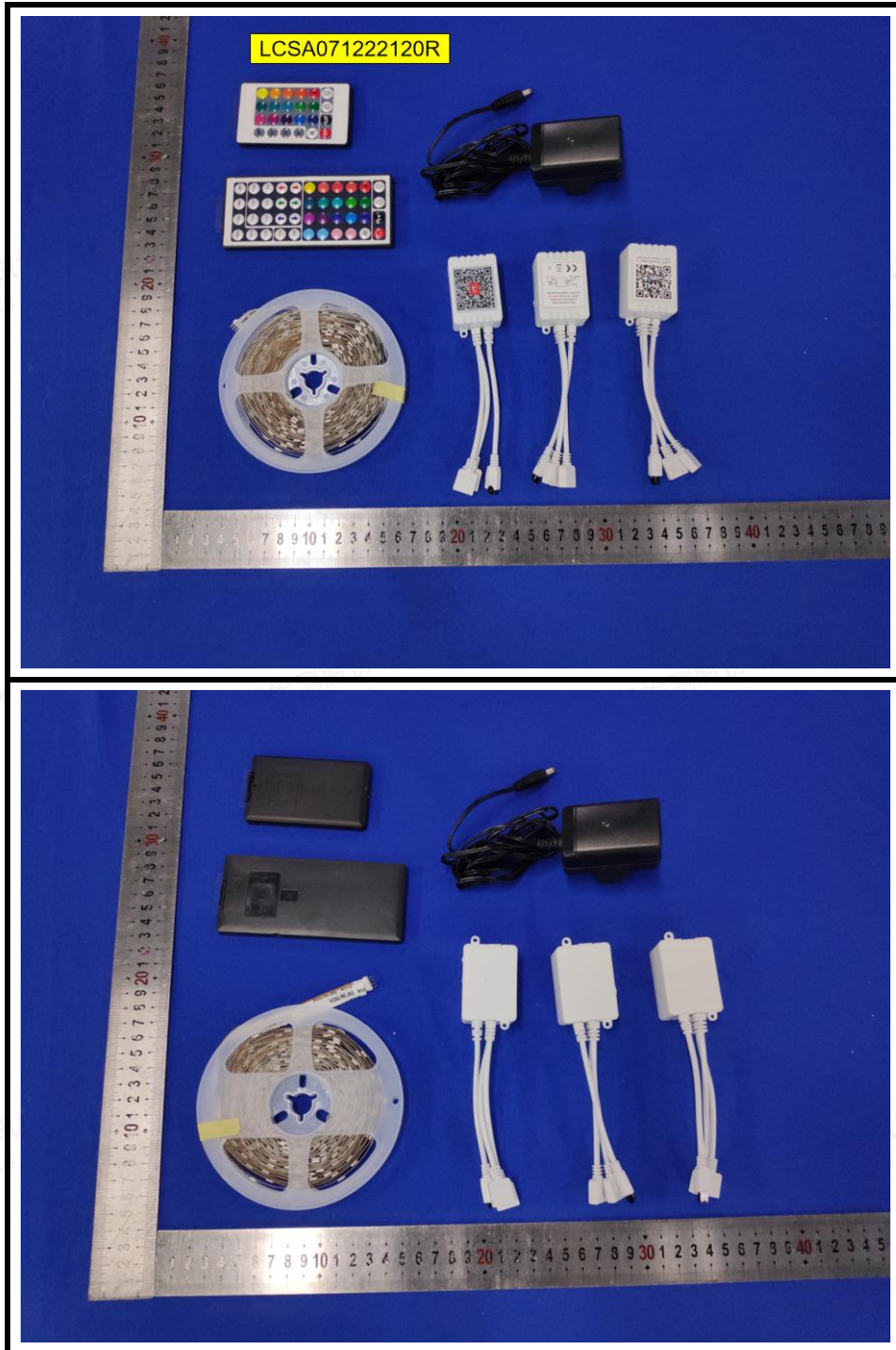
Add: F&G, 23/F, Technology Building, Quanzhi Science and Technology Innovation Park, Industrial Building,  
Maozhoushan Industrial Park, Houting, Shajing Street, Bao'an District, Shenzhen, Guangdong, China

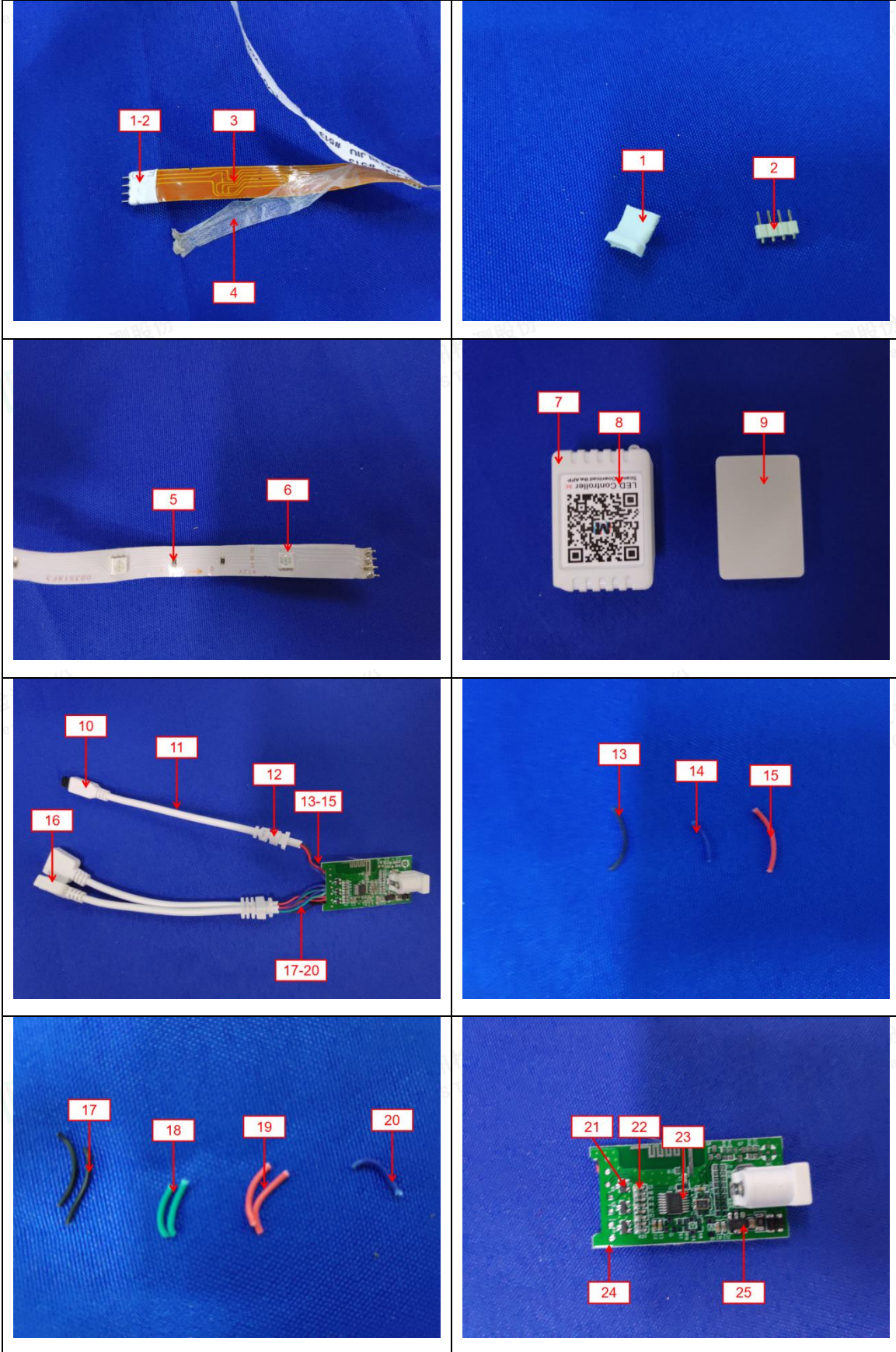
Tel: +(86) 0755-82591330 | E-mail: webmaster@lcs-cert.com | Web: www.lcs-cert.com

Scan code to check authenticity

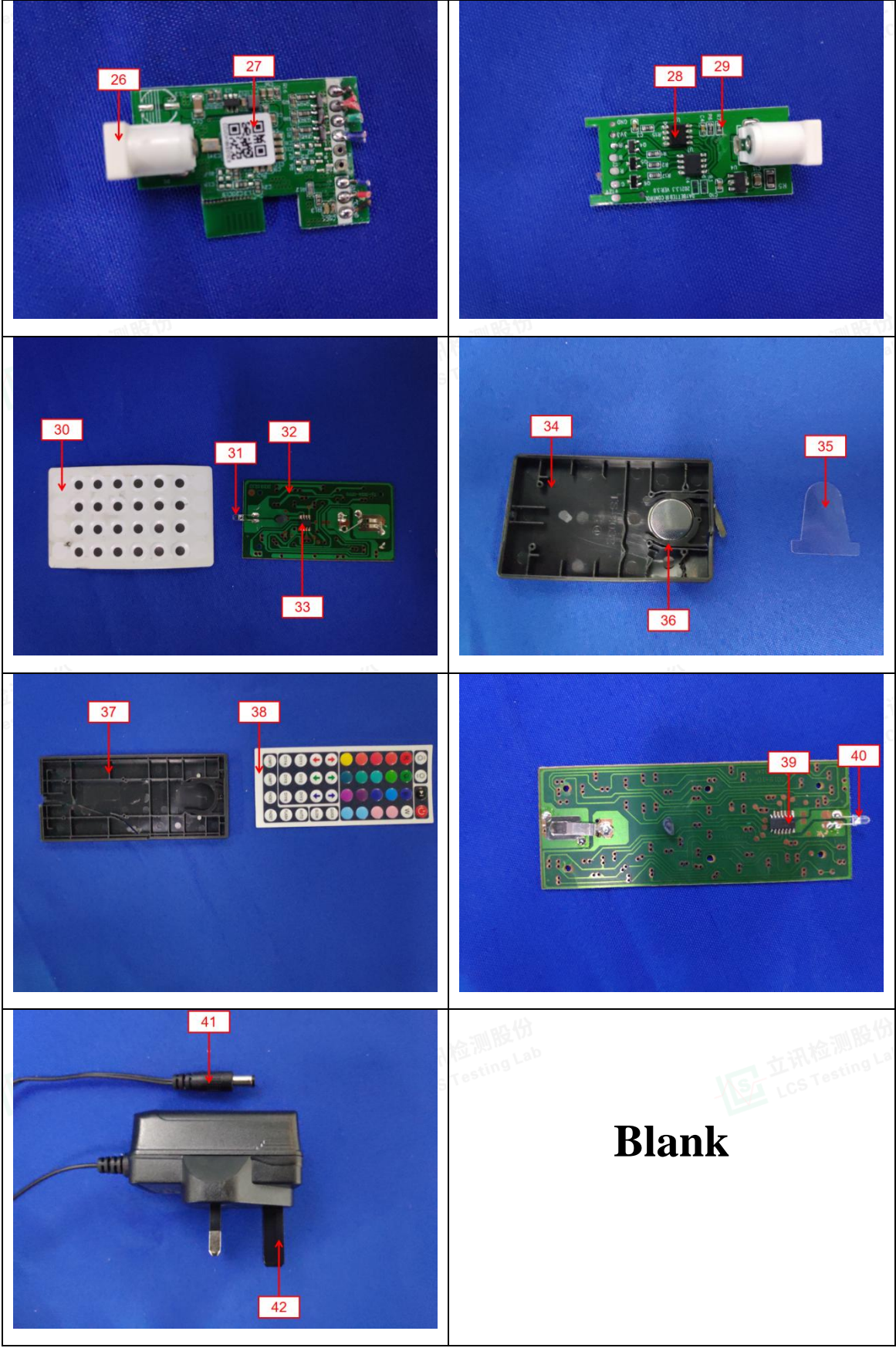


# The photo of the sample









**Blank**





**Statement:**

1. The test report is invalid without the signature of the approver and the special seal for the company's report;
2. The company name, address and sample information shown on the report were provided by the applicant who should be responsible for the authenticity which are not verified by LCS;
3. The test results in this report are only responsible for the tested samples;
4. Without written approval of LCS, this report can't be reproduced except in full;
5. In case of any discrepancy between the corresponding Chinese and English contents in the test report, the English version shall prevail.

\*\*\* End of Report \*\*\*

