



# Test Report



**Report No.: MTi220114013-06C1**



**Date of Issue: March 31, 2022**



**Client: Beijing Veikk E-commerce Co., Ltd**

**Product: Pen Tablet**

**Test Type: Commissioned Inspection**



**Shenzhen Microtest Co., Ltd.**

<http://www.mtitest.com>





# Instructions



1. The report shall not be partially reproduced without the written consent of the Laboratory ;



2. The test results of this report are only responsible for the samples submitted ;

3. This report is invalid without the seal and signature of the laboratory ;



4. This report is invalid if transferred, altered or tampered with in any form without authorization ;

5. Any objection to this report shall be submitted to the laboratory within 15 days from the date of receipt of the report.



# TEST REPORT

Report No.:MTi220114013-06C1

Page 1 of 22

<b>Basic Information</b>			
Client	Beijing Veikk E-commerce Co., Ltd		
Client Address	Room 302, Building 10, Machikou Village, Machikou Town, Changping District, Beijing, China		
Manufacturer	Shenzhen Hezon Lito Technology Co., Ltd.		
Manufacturer Address	C3, No. 45 Shasan Road, Shasan Community, Shajing Street, Baoan District, Shenzhen, China		
Factory	Shenzhen Hezon Lito Technology Co., Ltd.		
Factory Address	C3, No. 45 Shasan Road, Shasan Community, Shajing Street, Baoan District, Shenzhen, China		
<b>Sample Information</b>			
Product	Pen Tablet	Model	VK430
Serial Model	/	Brand/ Trademark	VEIKK
Sample Number	1	Sample Description	/
<b>Testing Information</b>			
Sample Receive Date	March 28, 2022	Sample Source	Customer provided
Test Specification	With reference to RoHS Directive (EU) 2015/863 amending 2011/65/EU(RoHS 2.0) .		
Date of Tests	March 28, 2022- March 31, 2022		
Test Address	Chemistry lab		
Test Results:	Please refer to next page(s).		
Conclusion:	The submitted sample(s) complied with the Lead, Cadmium, Mercury, Hexavalent Chromium, PBBs, PBDEs, DBP, BBP, DEHP, DIBP content requirement according to RoHS Directive (EU) 2015/863 amending 2011/65/EU(RoHS 2.0).		
Compiled:	<i>Noak Zhang</i>	Reviewed:	<i>Tobey Lin</i>
		Approved:	<i>olina</i>

Report No.:MTi220114013-06C1

Page 2 of 22

**Test Method:**

**1. With reference to IEC 62321-2:2013, review was performed for the samples disjointed from the submitted articles.**

**2. With reference to IEC 62321-1:2013, tests were performed for the samples indicated by**

**the photos in this report:**

**(1) With reference to IEC 62321-3-1:2013, screening by XRF spectroscopy.**

**(2) Wet chemical test method.**

**a. With reference to IEC 62321-5:2013, determination of Cadmium by ICP-OES.**

**b. With reference to IEC 62321-5:2013, determination of Lead by ICP-OES.**

**c. With reference to IEC 62321-4:2017, determination of Mercury by ICP-OES.**

**d. With reference to IEC 62321-7-1:2015 & IEC 62321-7-2:2017, determination of Hexavalent chromium by Colorimetric method using UV-Vis.**

**e. With reference to IEC 62321-6:2015, determination of PBBs and PBDEs by GC-MS.**

**3. With reference to IEC 62321-8: 2017, determination of phthalates by GC-MS.**

# TEST REPORT

Report No.:MTi220114013-06C1

Page 3 of 22

**Testing Result:**

Part No.	Sample Description	Test item	XRF Result	Chemical Test (mg/kg)	Conclusion
1	Black foam cotton	Pb	BL	/	Pass
		Cd	BL	/	
		Hg	BL	/	
		Cr(Cr(VI))	BL	/	
		Br(PBBs&PBDEs)	BL	/	
		Phthalate(DBP\BBP\DEHP\DIBP)	--	N.D.	
2	Black plastic label	Pb	BL	/	Pass
		Cd	BL	/	
		Hg	BL	/	
		Cr(Cr(VI))	BL	/	
		Br(PBBs&PBDEs)	BL	/	
		Phthalate(DBP\BBP\DEHP\DIBP)	--	N.D.	
3	Black metal screw	Pb	BL	/	Pass
		Cd	BL	/	
		Hg	BL	/	
		Cr(Cr(VI))	X	N.D.	
		Br(PBBs&PBDEs)	--	--	
		Phthalate(DBP\BBP\DEHP\DIBP)	--	--	
4	Black plastic	Pb	BL	/	Pass
		Cd	BL	/	
		Hg	BL	/	
		Cr(Cr(VI))	BL	/	
		Br(PBBs&PBDEs)	BL	/	
		Phthalate(DBP\BBP\DEHP\DIBP)	--	N.D.	

# TEST REPORT

Report No.:MTi220114013-06C1

Page 4 of 22

Part No.	Sample Description	Test item	XRF Result	Chemical Test (mg/kg)	Conclusion
5	Black plastic	Pb	BL	/	Pass
		Cd	BL	/	
		Hg	BL	/	
		Cr(Cr(VI))	BL	/	
		Br(PBBs&PBDEs)	BL	/	
		Phthalate(DBP\BBP \DEHP\DIBP)	--	N.D.	
6	Black plastic	Pb	BL	/	Pass
		Cd	BL	/	
		Hg	BL	/	
		Cr(Cr(VI))	BL	/	
		Br(PBBs&PBDEs)	BL	/	
		Phthalate(DBP\BBP \DEHP\DIBP)	--	N.D.	
7	Black plastic	Pb	BL	/	Pass
		Cd	BL	/	
		Hg	BL	/	
		Cr(Cr(VI))	BL	/	
		Br(PBBs&PBDEs)	BL	/	
		Phthalate(DBP\BBP \DEHP\DIBP)	--	N.D.	
8	Black plastic	Pb	BL	/	Pass
		Cd	BL	/	
		Hg	BL	/	
		Cr(Cr(VI))	BL	/	
		Br(PBBs&PBDEs)	BL	/	
		Phthalate(DBP\BBP \DEHP\DIBP)	--	N.D.	
9	Silver metal	Pb	BL	/	Pass
		Cd	BL	/	
		Hg	BL	/	
		Cr(Cr(VI))	BL	/	
		Br(PBBs&PBDEs)	--	--	
		Phthalate(DBP\BBP \DEHP\DIBP)	--	--	

# TEST REPORT

Report No.:MTi220114013-06C1

Page 5 of 22

Part No.	Sample Description	Test item	XRF Result	Chemical Test (mg/kg)	Conclusion
10	White plastic	Pb	BL	/	Pass
		Cd	BL	/	
		Hg	BL	/	
		Cr(Cr(VI))	BL	/	
		Br(PBBs&PBDEs)	BL	/	
		Phthalate(DBP\BBP \DEHP\DIBP)	--	N.D.	
11	Silver metal	Pb	BL	/	Pass
		Cd	BL	/	
		Hg	BL	/	
		Cr(Cr(VI))	BL	/	
		Br(PBBs&PBDEs)	--	--	
		Phthalate(DBP\BBP \DEHP\DIBP)	--	--	
12	White rubber	Pb	BL	/	Pass
		Cd	BL	/	
		Hg	BL	/	
		Cr(Cr(VI))	BL	/	
		Br(PBBs&PBDEs)	BL	/	
		Phthalate(DBP\BBP \DEHP\DIBP)	--	N.D.	
13	Black plastic	Pb	BL	/	Pass
		Cd	BL	/	
		Hg	BL	/	
		Cr(Cr(VI))	BL	/	
		Br(PBBs&PBDEs)	BL	/	
		Phthalate(DBP\BBP \DEHP\DIBP)	--	N.D.	
14	Silver metal	Pb	BL	/	Pass
		Cd	BL	/	
		Hg	BL	/	
		Cr(Cr(VI))	X	N.D.	
		Br(PBBs&PBDEs)	--	--	
		Phthalate(DBP\BBP \DEHP\DIBP)	--	--	

# TEST REPORT

Report No.:MTi220114013-06C1

Page 6 of 22

Part No.	Sample Description	Test item	XRF Result	Chemical Test (mg/kg)	Conclusion
15	Black plastic	Pb	BL	/	Pass
		Cd	BL	/	
		Hg	BL	/	
		Cr(Cr(VI))	BL	/	
		Br(PBBs&PBDEs)	BL	/	
		Phthalate(DBP\BBP \DEHP\DIBP)	--	N.D.	
16	Silver metal	Pb	BL	/	Pass
		Cd	BL	/	
		Hg	BL	/	
		Cr(Cr(VI))	BL	/	
		Br(PBBs&PBDEs)	--	--	
		Phthalate(DBP\BBP \DEHP\DIBP)	--	--	
17	White rubber	Pb	BL	/	Pass
		Cd	BL	/	
		Hg	BL	/	
		Cr(Cr(VI))	BL	/	
		Br(PBBs&PBDEs)	BL	/	
		Phthalate(DBP\BBP \DEHP\DIBP)	--	N.D.	
18	Solder	Pb	BL	/	Pass
		Cd	BL	/	
		Hg	BL	/	
		Cr(Cr(VI))	BL	/	
		Br(PBBs&PBDEs)	--	--	
		Phthalate(DBP\BBP \DEHP\DIBP)	--	--	
19	Blue PCB	Pb	BL	/	Pass
		Cd	BL	/	
		Hg	BL	/	
		Cr(Cr(VI))	BL	/	
		Br(PBBs&PBDEs)	X	N.D.	
		Phthalate(DBP\BBP \DEHP\DIBP)	--	N.D.	



# TEST REPORT

Report No.:MTi220114013-06C1

Page 7 of 22

Part No.	Sample Description	Test item	XRF Result	Chemical Test (mg/kg)	Conclusion
20	Blue plastic	Pb	BL	/	Pass
		Cd	BL	/	
		Hg	BL	/	
		Cr(Cr(VI))	BL	/	
		Br(PBBs&PBDEs)	BL	/	
		Phthalate(DBP\BBP \DEHP\DIBP)	--	N.D.	
21	Black line skin	Pb	BL	/	Pass
		Cd	BL	/	
		Hg	BL	/	
		Cr(Cr(VI))	BL	/	
		Br(PBBs&PBDEs)	BL	/	
		Phthalate(DBP\BBP \DEHP\DIBP)	--	N.D.	
22	Black line skin	Pb	BL	/	Pass
		Cd	BL	/	
		Hg	BL	/	
		Cr(Cr(VI))	BL	/	
		Br(PBBs&PBDEs)	BL	/	
		Phthalate(DBP\BBP \DEHP\DIBP)	--	N.D.	
23	White line skin	Pb	BL	/	Pass
		Cd	BL	/	
		Hg	BL	/	
		Cr(Cr(VI))	BL	/	
		Br(PBBs&PBDEs)	BL	/	
		Phthalate(DBP\BBP \DEHP\DIBP)	--	N.D.	
24	Red line skin	Pb	BL	/	Pass
		Cd	BL	/	
		Hg	BL	/	
		Cr(Cr(VI))	BL	/	
		Br(PBBs&PBDEs)	BL	/	
		Phthalate(DBP\BBP \DEHP\DIBP)	--	N.D.	

# TEST REPORT

Report No.:MTi220114013-06C1

Page 8 of 22

Part No.	Sample Description	Test item	XRF Result	Chemical Test (mg/kg)	Conclusion
25	Green line skin	Pb	BL	/	Pass
		Cd	BL	/	
		Hg	BL	/	
		Cr(Cr(VI))	BL	/	
		Br(PBBs&PBDEs)	BL	/	
		Phthalate(DBP\BBP \DEHP\DIBP)	--	N.D.	
26	Silver wire	Pb	BL	/	Pass
		Cd	BL	/	
		Hg	BL	/	
		Cr(Cr(VI))	BL	/	
		Br(PBBs&PBDEs)	--	--	
		Phthalate(DBP\BBP \DEHP\DIBP)	--	--	
27	Black plastic	Pb	BL	/	Pass
		Cd	BL	/	
		Hg	BL	/	
		Cr(Cr(VI))	BL	/	
		Br(PBBs&PBDEs)	BL	/	
		Phthalate(DBP\BBP \DEHP\DIBP)	--	N.D.	
28	Silver metal	Pb	BL	/	Pass
		Cd	BL	/	
		Hg	BL	/	
		Cr(Cr(VI))	X	N.D.	
		Br(PBBs&PBDEs)	--	--	
		Phthalate(DBP\BBP \DEHP\DIBP)	--	--	
29	Silver metal	Pb	BL	/	Pass
		Cd	BL	/	
		Hg	BL	/	
		Cr(Cr(VI))	X	N.D.	
		Br(PBBs&PBDEs)	--	--	
		Phthalate(DBP\BBP \DEHP\DIBP)	--	--	

# TEST REPORT

Report No.:MTi220114013-06C1

Page 9 of 22

Part No.	Sample Description	Test item	XRF Result	Chemical Test (mg/kg)	Conclusion
30	Black metal screw	Pb	BL	/	Pass
		Cd	BL	/	
		Hg	BL	/	
		Cr(Cr(VI))	BL	/	
		Br(PBBs&PBDEs)	--	--	
		Phthalate(DBP\BBP \DEHP\DIBP)	--	--	
31	Black plastic	Pb	BL	/	Pass
		Cd	BL	/	
		Hg	BL	/	
		Cr(Cr(VI))	BL	/	
		Br(PBBs&PBDEs)	BL	/	
		Phthalate(DBP\BBP \DEHP\DIBP)	--	N.D.	
32	Pink line	Pb	BL	/	Pass
		Cd	BL	/	
		Hg	BL	/	
		Cr(Cr(VI))	BL	/	
		Br(PBBs&PBDEs)	BL	/	
		Phthalate(DBP\BBP \DEHP\DIBP)	--	N.D.	
33	Black plastic	Pb	BL	/	Pass
		Cd	BL	/	
		Hg	BL	/	
		Cr(Cr(VI))	BL	/	
		Br(PBBs&PBDEs)	BL	/	
		Phthalate(DBP\BBP \DEHP\DIBP)	--	N.D.	
34	Black plastic	Pb	BL	/	Pass
		Cd	BL	/	
		Hg	BL	/	
		Cr(Cr(VI))	X	N.D.	
		Br(PBBs&PBDEs)	BL	/	
		Phthalate(DBP\BBP \DEHP\DIBP)	--	N.D.	

# TEST REPORT

Report No.:MTi220114013-06C1

Page 10 of 22

Part No.	Sample Description	Test item	XRF Result	Chemical Test (mg/kg)	Conclusion
35	Black plastic	Pb	BL	/	Pass
		Cd	BL	/	
		Hg	BL	/	
		Cr(Cr(VI))	BL	/	
		Br(PBBs&PBDEs)	BL	/	
		Phthalate(DBP\BBP \DEHP\DIBP)	--	N.D.	
36	Black plastic	Pb	BL	/	Pass
		Cd	BL	/	
		Hg	BL	/	
		Cr(Cr(VI))	BL	/	
		Br(PBBs&PBDEs)	BL	/	
		Phthalate(DBP\BBP \DEHP\DIBP)	--	N.D.	
37	Black plastic	Pb	BL	/	Pass
		Cd	BL	/	
		Hg	BL	/	
		Cr(Cr(VI))	BL	/	
		Br(PBBs&PBDEs)	BL	/	
		Phthalate(DBP\BBP \DEHP\DIBP)	--	N.D.	
38	Solder	Pb	BL	/	Pass
		Cd	BL	/	
		Hg	BL	/	
		Cr(Cr(VI))	BL	/	
		Br(PBBs&PBDEs)	--	--	
		Phthalate(DBP\BBP \DEHP\DIBP)	--	--	
39	White patch capacitance	Pb	BL	/	Pass
		Cd	BL	/	
		Hg	BL	/	
		Cr(Cr(VI))	BL	/	
		Br(PBBs&PBDEs)	X	N.D.	
		Phthalate(DBP\BBP \DEHP\DIBP)	--	N.D.	

# TEST REPORT

Report No.:MTi220114013-06C1

Page 11 of 22

Part No.	Sample Description	Test item	XRF Result	Chemical Test (mg/kg)	Conclusion
40	Yellow patch capacitance	Pb	BL	/	Pass
		Cd	BL	/	
		Hg	BL	/	
		Cr(Cr(VI))	BL	/	
		Br(PBBs&PBDEs)	X	N.D.	
		Phthalate(DBP\BBP \DEHP\DIBP)	--	N.D.	
41	Green PCB	Pb	BL	/	Pass
		Cd	BL	/	
		Hg	BL	/	
		Cr(Cr(VI))	BL	/	
		Br(PBBs&PBDEs)	X	N.D.	
		Phthalate(DBP\BBP \DEHP\DIBP)	--	N.D.	
42	Green PCB	Pb	BL	/	Pass
		Cd	BL	/	
		Hg	BL	/	
		Cr(Cr(VI))	BL	/	
		Br(PBBs&PBDEs)	X	N.D.	
		Phthalate(DBP\BBP \DEHP\DIBP)	--	N.D.	
43	Black IC	Pb	BL	/	Pass
		Cd	BL	/	
		Hg	BL	/	
		Cr(Cr(VI))	BL	/	
		Br(PBBs&PBDEs)	X	N.D.	
		Phthalate(DBP\BBP \DEHP\DIBP)	--	N.D.	
44	Diode	Pb	BL	/	Pass
		Cd	BL	/	
		Hg	BL	/	
		Cr(Cr(VI))	BL	/	
		Br(PBBs&PBDEs)	X	N.D.	
		Phthalate(DBP\BBP \DEHP\DIBP)	--	N.D.	

Part No.	Sample Description	Test item	XRF Result	Chemical Test (mg/kg)	Conclusion
45	White patch capacitance	Pb	BL	/	Pass
		Cd	BL	/	
		Hg	BL	/	
		Cr(Cr(VI))	BL	/	
		Br(PBBs&PBDEs)	X	N.D.	
		Phthalate(DBP\BBP \DEHP\DIBP)	--	N.D.	
46	Black IC	Pb	BL	/	Pass
		Cd	BL	/	
		Hg	BL	/	
		Cr(Cr(VI))	BL	/	
		Br(PBBs&PBDEs)	X	N.D.	
		Phthalate(DBP\BBP \DEHP\DIBP)	--	N.D.	
47	Crystal oscillator	Pb	BL	/	Pass
		Cd	BL	/	
		Hg	BL	/	
		Cr(Cr(VI))	BL	/	
		Br(PBBs&PBDEs)	X	N.D.	
		Phthalate(DBP\BBP \DEHP\DIBP)	--	N.D.	
48	Yellow patch capacitance	Pb	BL	/	Pass
		Cd	BL	/	
		Hg	BL	/	
		Cr(Cr(VI))	BL	/	
		Br(PBBs&PBDEs)	X	N.D.	
		Phthalate(DBP\BBP \DEHP\DIBP)	--	--	
49	Audion	Pb	BL	/	Pass
		Cd	BL	/	
		Hg	BL	/	
		Cr(Cr(VI))	BL	/	
		Br(PBBs&PBDEs)	X	N.D.	
		Phthalate(DBP\BBP \DEHP\DIBP)	--	N.D.	

# TEST REPORT

Report No.:MTi220114013-06C1

Page 13 of 22

Part No.	Sample Description	Test item	XRF Result	Chemical Test (mg/kg)	Conclusion
50	Gray patch capacitance	Pb	BL	/	Pass
		Cd	BL	/	
		Hg	BL	/	
		Cr(Cr(VI))	BL	/	
		Br(PBBs&PBDEs)	BL	/	
		Phthalate(DBP\BBP \DEHP\DIBP)	--	N.D.	
51	Silver metal	Pb	BL	/	Pass
		Cd	BL	/	
		Hg	BL	/	
		Cr(Cr(VI))	BL	/	
		Br(PBBs&PBDEs)	--	--	
		Phthalate(DBP\BBP \DEHP\DIBP)	--	--	
52	Black resistance	Pb	BL	/	Pass
		Cd	BL	/	
		Hg	BL	/	
		Cr(Cr(VI))	BL	/	
		Br(PBBs&PBDEs)	BL	/	
		Phthalate(DBP\BBP \DEHP\DIBP)	--	N.D.	
53	Luminous diode	Pb	BL	/	Pass
		Cd	BL	/	
		Hg	BL	/	
		Cr(Cr(VI))	BL	/	
		Br(PBBs&PBDEs)	BL	/	
		Phthalate(DBP\BBP \DEHP\DIBP)	--	N.D.	

**Remark:**

- (1) (a) It is the result on total Br while test item on restricted substances is PBBs/PBDEs. It is the result on total Cr while test item on restricted substances is Cr<sup>6+</sup>.
- (b) Results are obtained by XRF for primary screening, and further chemical testing by ICP-OES (for Cd, Pb, Hg), UV-Vis (for Cr(VI)) and GC-MS (for PBBs, PBDEs) is recommended to be performed, if the concentration exceeds the below warning value according to IEC62321-3-1:2013 (unit: mg/kg).

Element	Polymers	Metals	Composite Material
Cd	$BL \leq (70-3\sigma) < X < (130+3\sigma) \leq OL$	$BL \leq (70-3\sigma) < X < (130+3\sigma) \leq OL$	$LOD < X < (150+3\sigma) \leq OL$
Pb	$BL \leq (700-3\sigma) < X < (1300+3\sigma) \leq OL$	$BL \leq (700-3\sigma) < X < (1300+3\sigma) \leq OL$	$BL \leq (500-3\sigma) < X < (1500+3\sigma) \leq OL$
Hg	$BL \leq (700-3\sigma) < X < (1300+3\sigma) \leq OL$	$BL \leq (700-3\sigma) < X < (1300+3\sigma) \leq OL$	$BL \leq (500-3\sigma) < X < (1500+3\sigma) \leq OL$
Cr	$BL \leq (700-3\sigma) < X$	$BL \leq (700-3\sigma) < X$	$BL \leq (500-3\sigma) < X$
Br	$BL \leq (300-3\sigma) < X$	NA	$BL \leq (250-3\sigma) < X$

(c) OL=Over Limit, BL=Below Limit, X=inconclusive, LOD=Limit of Detection, NA=not applicable, -- = No Testing

(d) The XRF screening test for RoHS elements-The reading may be different to the actual content in the sample be of non-uniformity composition

(2) (a) mg/kg=ppm=0.0001%, N.D.=not detected (<MDL)

(b) Unit and Method Detection Limit(MDL) in wet chemical test

Test Items	Unit	MDL	Limit
Pb	mg/kg	2	1000
Cd	mg/kg	2	100
Hg	mg/kg	2	1000
Cr <sup>6+</sup>	mg/kg	See below	1000
PBBs	mg/kg	See below	1000
PBDEs	mg/kg	See below	1000
DBP	mg/kg	50	1000
BBP	mg/kg	50	1000
DEHP	mg/kg	50	1000
DIBP	mg/kg	50	1000



The MDL for single compound of PBBs & PBDEs is 20mg/kg, MDL of Cr<sup>6+</sup> for metal sample is 0.10µg/cm<sup>2</sup>. and MDL of Cr<sup>6+</sup> for polymer & composite sample is 8 mg/kg.

(c) Metal sample:

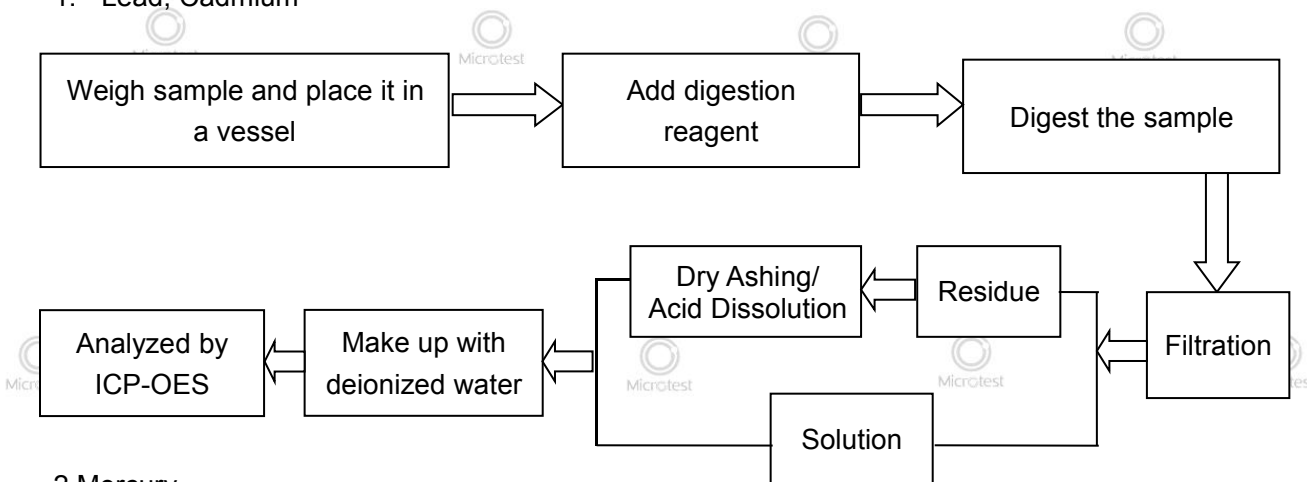
- The sample is positive for Cr<sup>6+</sup> if the Cr<sup>6+</sup> concentration is greater than 0.13 µg/cm<sup>2</sup>.  
The sample coating is considered to contain Cr<sup>6+</sup>.
- The sample is negative for Cr<sup>6+</sup> if Cr<sup>6+</sup> is ND (concentration less than 0.10 µg/cm<sup>2</sup>).  
The coating is considered a non- Cr<sup>6+</sup> based coating
- The result between 0.10 µg/cm<sup>2</sup> and 0.13 µg/cm<sup>2</sup> is considered to be inconclusive,  
unavoidable coating variations may influence the determination

Information on storage conditions and production date of the tested sample is unavailable and thus Cr<sup>6+</sup> results represent status of the sample at the time of testing.

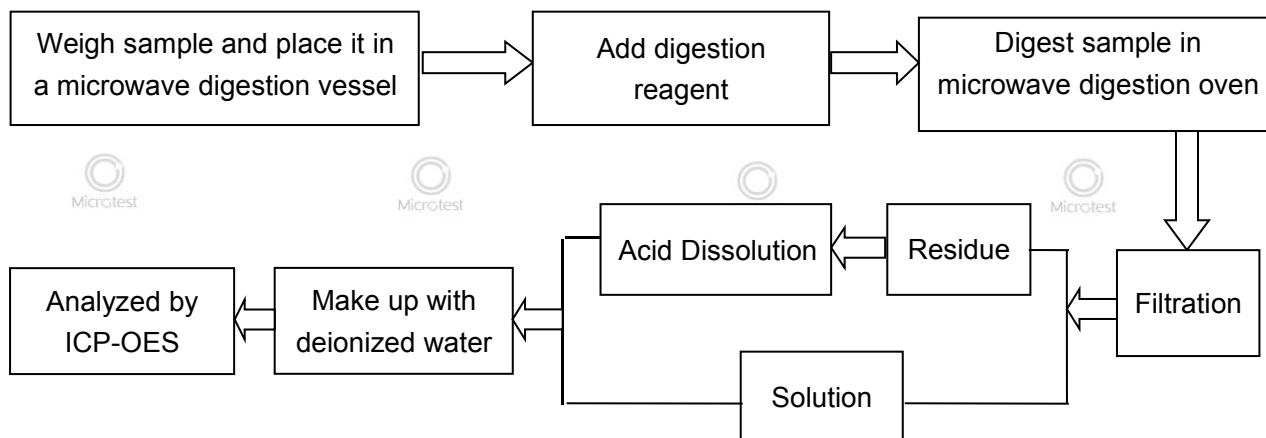
(3) As specified by client to test the specified materials only.

**Testing flow chart:**

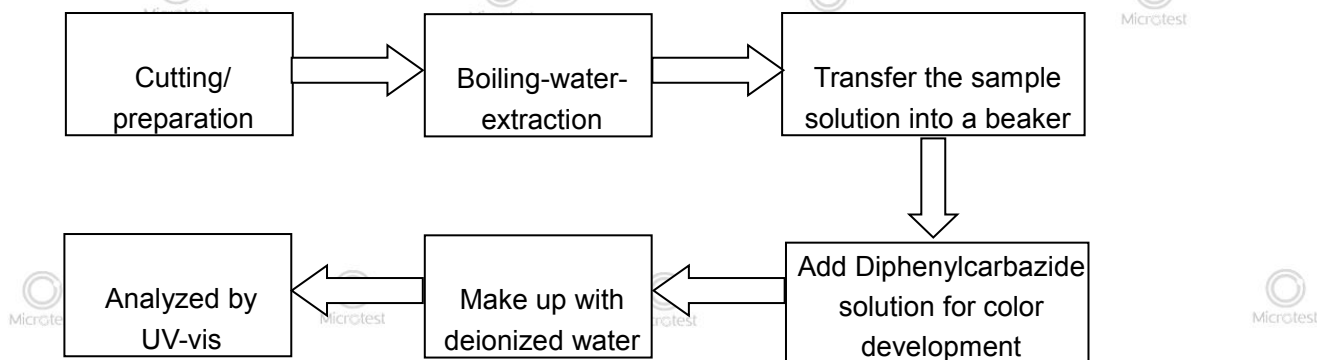
1. Lead, Cadmium



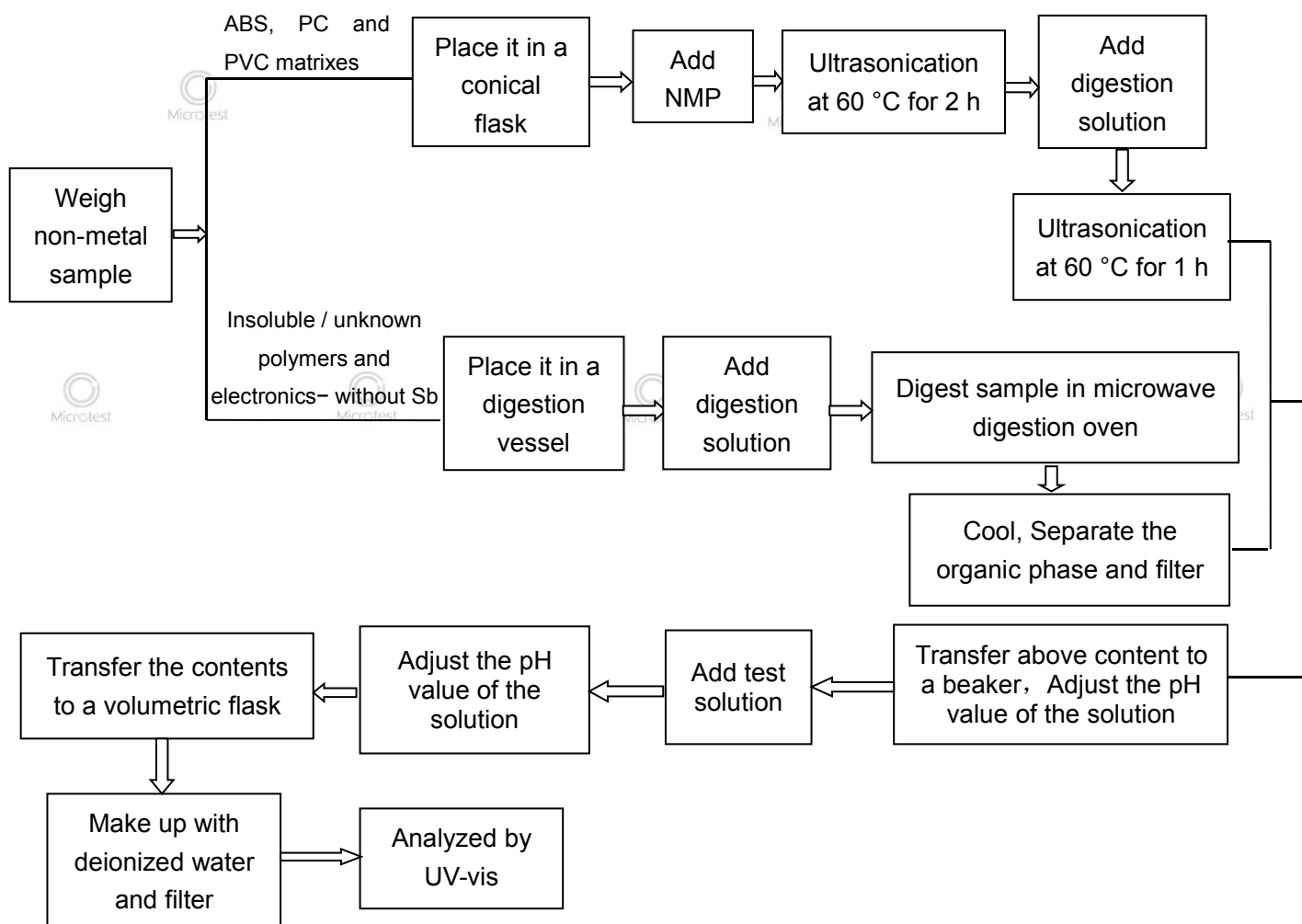
2. Mercury



### 3.Hexavalent Chromium (For metal material)

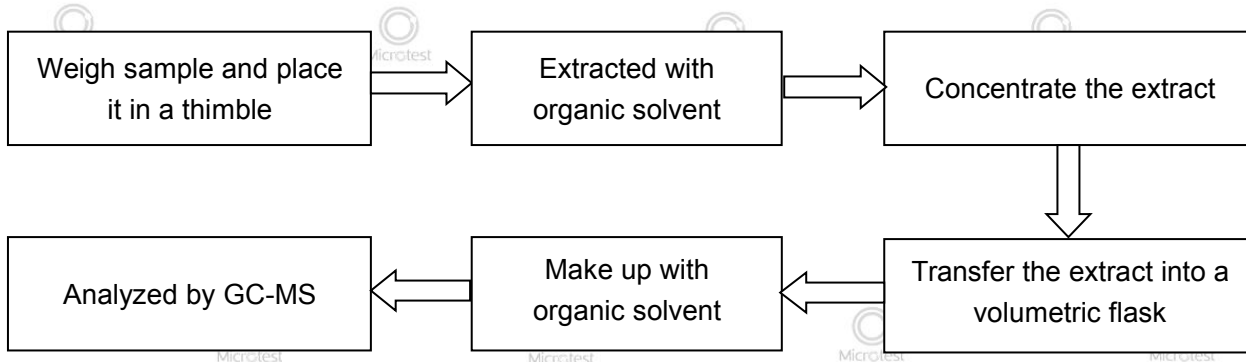


### 4.Hexavalent Chromium(For non-metal material):

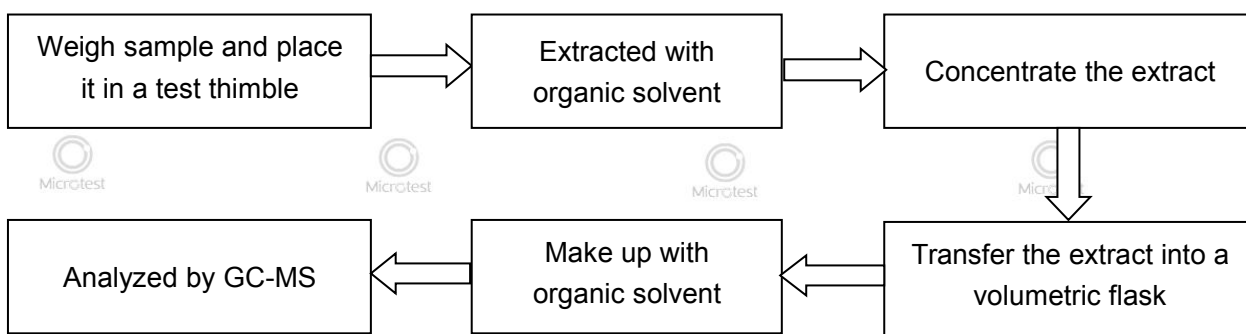




5.Polybromobiphenyls (PBBs), Polybromodiphenyl ethers (PBDEs)

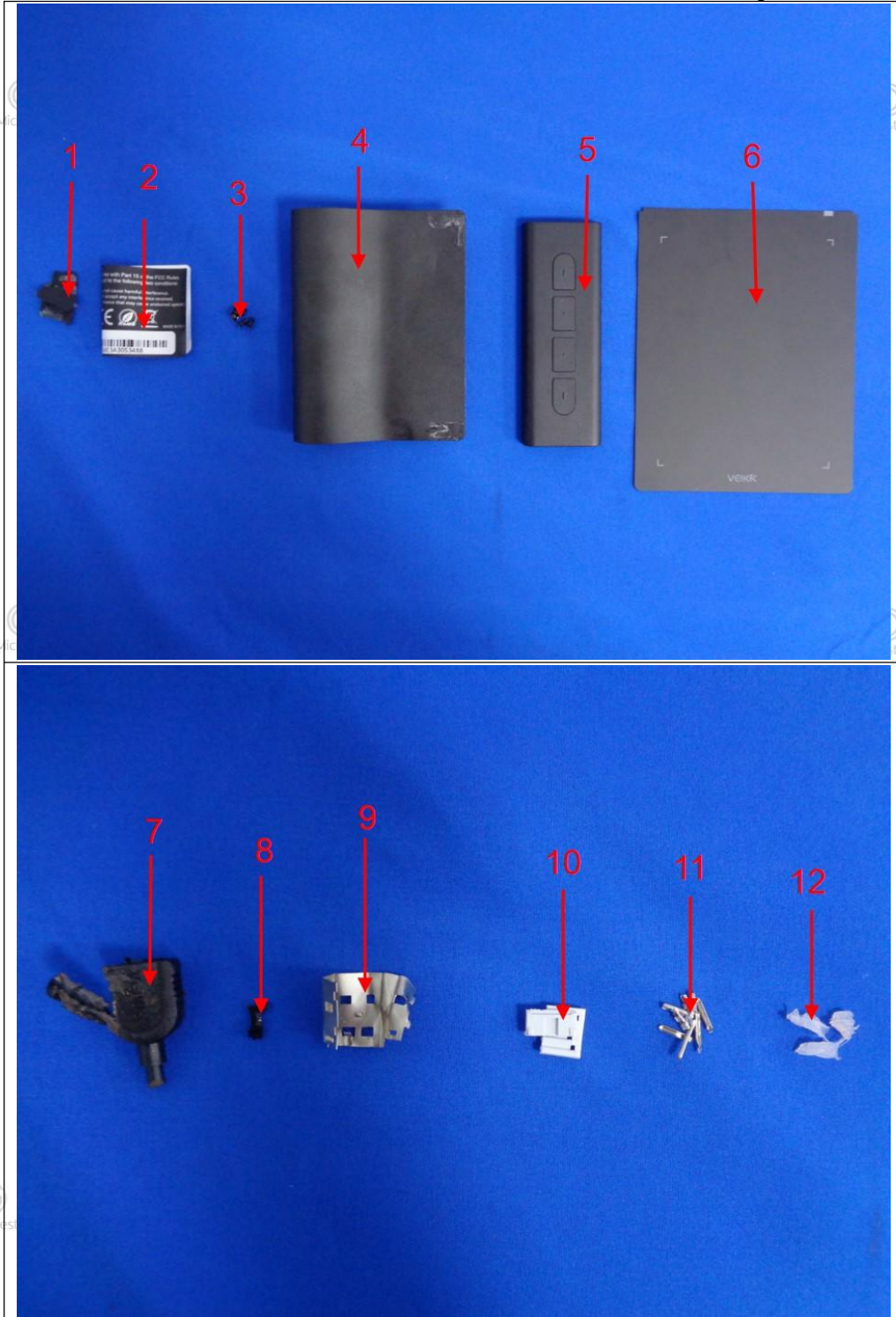


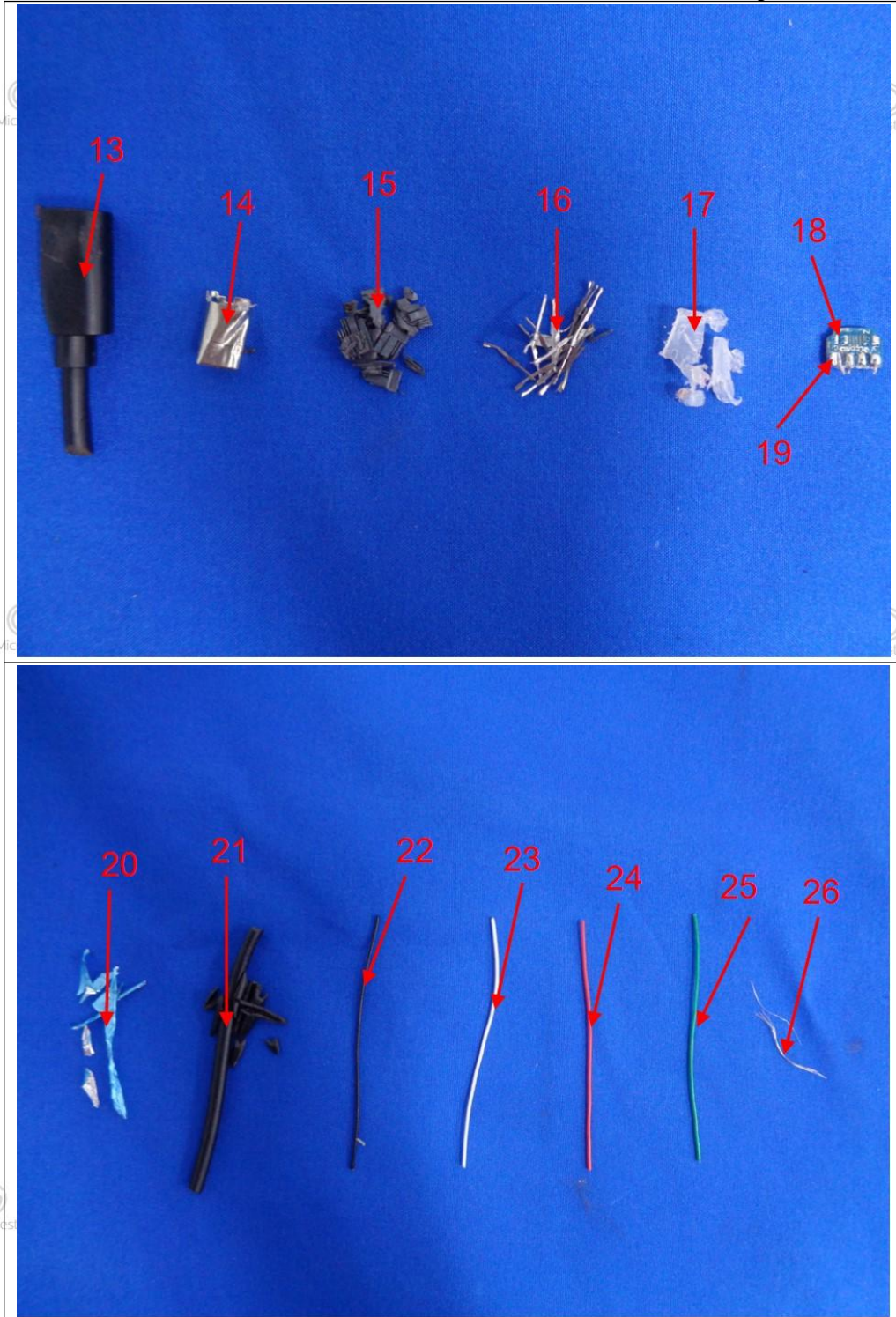
6.Phtalates(DBP, BBP, DEHP, DIBP)

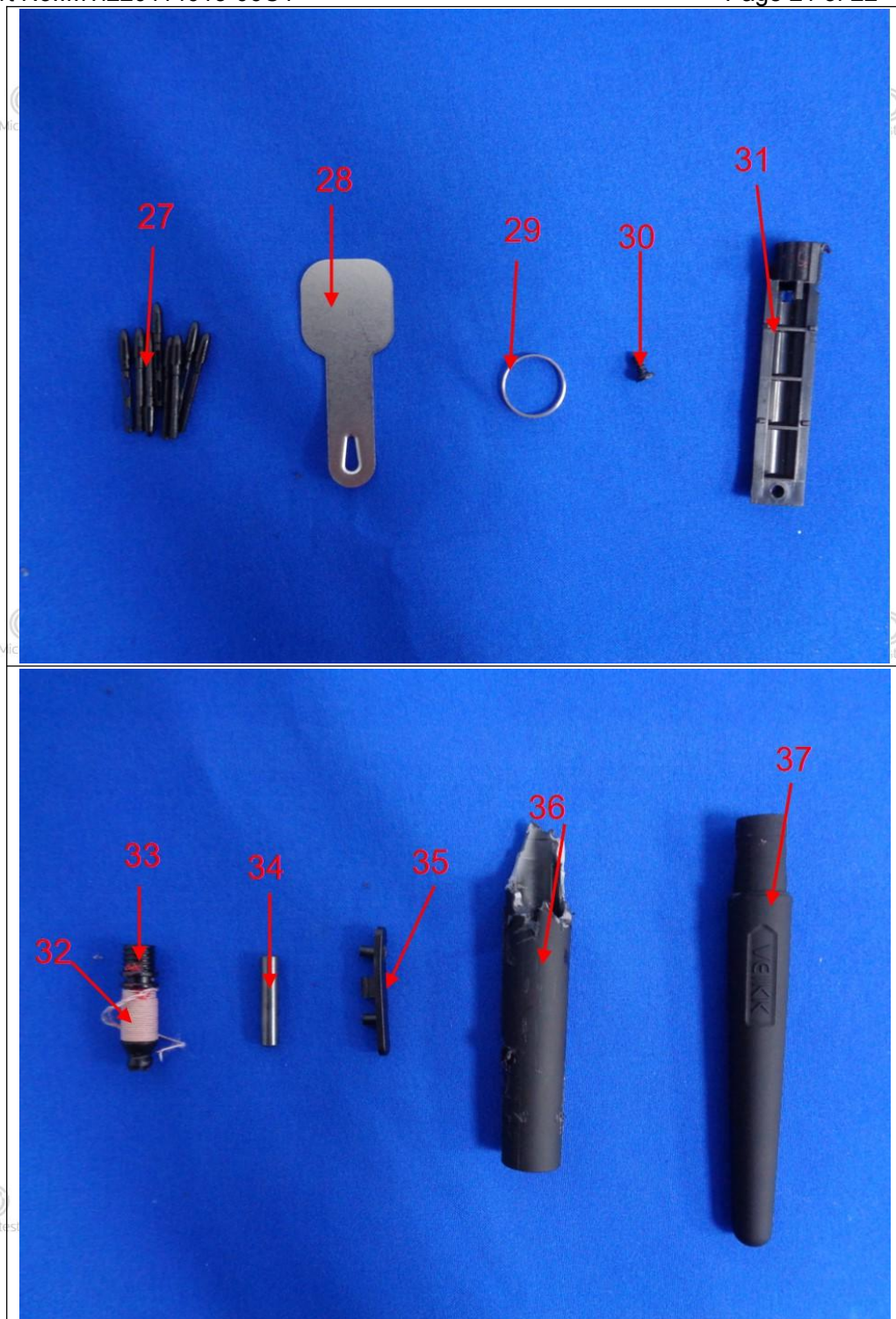


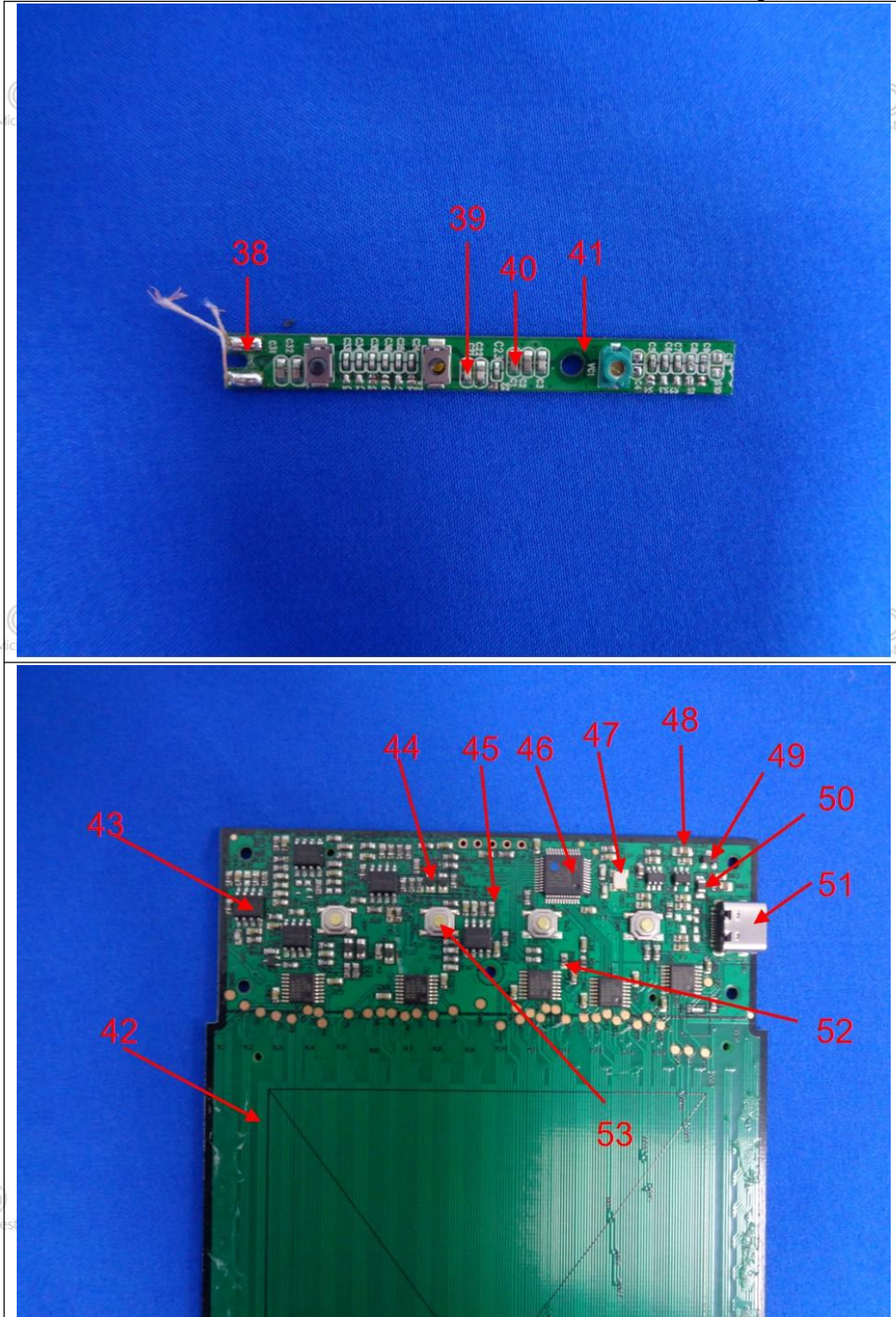
**Pictures**











\*\*\*\*\* END \*\*\*\*\*