



ENERRIGHT INTELLIGENT LIMITED

信源智能有限公司

RETRO  
LOGIC Ai

Empowering Tomorrow • Saving Today

Explore a greener, smarter future  
with EnerRight Intelligent Limited.

與信源智能一起探索更綠色、更智能的未來。



## RetroLogic AI: Empowering Sustainable Building Futures

Revolutionizing Building Retrofitting  
with Intelligent Solutions

**Overview:** RetroLogic AI, developed by University, is an advanced Artificial Intelligence system tailored for building retrofitting. This cutting-edge solution combines smart technologies, energy-saving features, and Fault Detection and Diagnosis (FDD) functionalities to enhance building efficiency and sustainability.

## Key Features

### 1. Intelligent Retrofitting:

- RetroLogic AI employs state-of-the-art AI algorithms to intelligently optimize building systems, ensuring maximum energy efficiency.

### 2. Energy-Saving Strategies:

- The system integrates innovative energy-saving strategies, contributing to reduced operational costs and a smaller environmental footprint.

### 3. Fault Detection and Diagnosis (FDD):

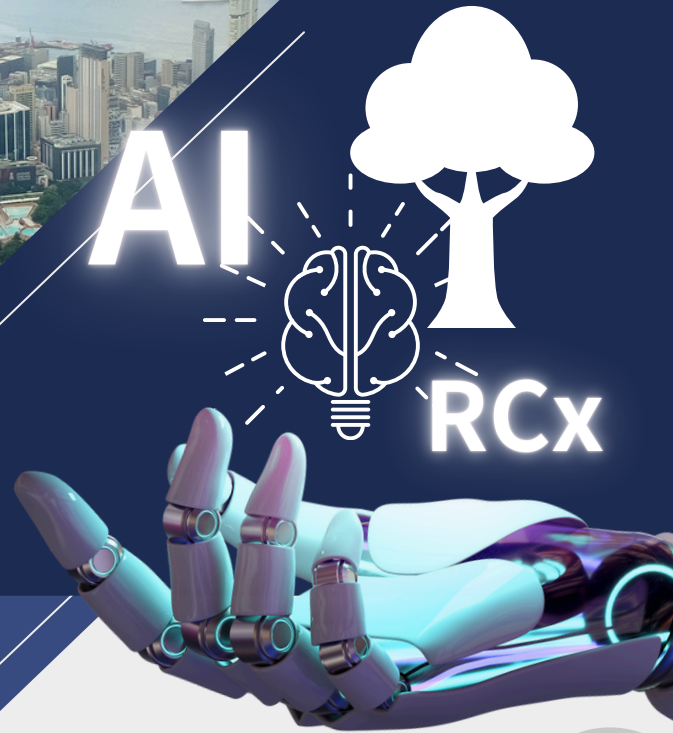
- RetroLogic AI goes beyond traditional retrofitting by providing robust FDD capabilities, proactively identifying and addressing issues for uninterrupted building performance.

### 4. User-Friendly Interface:

- The intuitive interface of RetroLogic AI simplifies the retrofitting process, making it accessible for users at all levels of technical expertise.

### 5. Customizable Solutions:

- Tailor RetroLogic AI to meet specific building requirements, ensuring a personalized and effective retrofitting strategy.



# Benefits

## 1. Sustainability:

- Contribute to environmental conservation by reducing energy consumption and carbon footprint.

## 2. Cost Efficiency:

- RetroLogic AI optimizes building systems, leading to significant cost savings in operational and maintenance expenses.

## 3. Proactive Maintenance:

- The FDD feature allows for proactive identification of potential issues, minimizing downtime and disruptions.

## 4. Smart Building Experience:

- Elevate the building experience with intelligent technologies, providing occupants with a comfortable and energy-efficient environment.

## What Makes RetroLogic AI the Preferred Choice?

### • Proven Development and Performance

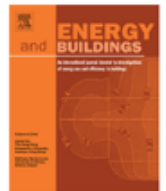
Energy & Buildings 262 (2022) 112017



Contents lists available at ScienceDirect

Energy & Buildings

journal homepage: [www.elsevier.com/locate/enb](http://www.elsevier.com/locate/enb)



- RetroLogic AI is grounded in proven research, including the successful "Development and Performance Evaluation of a Chiller Plant Predictive Operational Control Strategy Using Artificial Intelligence".

### • Real-World Applications:

- RetroLogic AI has been applied in high-impact venues, including 3 Hong Kong Academy (HA) locations, Times Square, and the District Cooling System (DCS) at the Hong Kong-Zhuhai-Macao Bridge Hong Kong Port. These real-world implementations demonstrate the adaptability and effectiveness of RetroLogic AI in diverse and demanding environments.

### • Recognition and Innovation Award:



THE HONG KONG  
INSTITUTION OF ENGINEERS  
香港工程師學會



- RetroLogic AI has been honored with the Cyberport Incubation Programme, a testament to its innovative contributions to the field. This recognition, in collaboration with the Hong Kong Institution of Engineers (HKIE) and Cyberport, funded by the government, highlights the system's excellence in driving technological advancements in the building retrofitting domain.

## Contact Us

For inquiries and consultations, reach out to EnerRight Intelligent Limited:

(852) 3707 3950 (852) 3709 8608 [info@enerright.com](mailto:info@enerright.com) <https://www.enerright.com>

Transform your buildings, embrace sustainability - RetroLogic AI, where intelligence meets retrofitting.



Wellness  
Environmental  
Solutions



服務業 Services Sector  
最佳中小企業獎 BEST SME AWARD  
中銀香港 BOCHK  
企業低碳環保領先大獎2023  
Corporate Low Carbon Environmental Leadership Award



HONG KONG  
ESG AWARDS

2024 Special Award for SME 中小型企業特別獎



ISO 14001:2015  
Certificate No: E1114



ISO 50001:2018  
Certificate No: EN048



ISO 9001:2015  
Certificate No: Q1946