



RoHS TEST REPORT

Prepared for :

Shenzhen Margotan Tech Co., Ltd.

**12F, Bldg.A, Rongchao Binhai Mansion, Haixiu Road No.2021, Xin'an Str,
Bao'an District, Shenzhen, China**

Product: Facial Cleansing Brush LED & EMS

Trade Name: N/A

Model Name: 1008

Date of Test: Apr. 22, 2020 - Apr. 28, 2020

Date of Report: Apr. 28, 2020

Report Number: HK2004160162-1RR

Prepared By :

Shenzhen HUAK Testing Technology Co., Ltd.

**1F, B2 Building, Junfeng Zhongcheng Zhizao Innovation Park, Heping
Community, Fuhai Street, Bao'an District, Shenzhen, China**

TEL: +86-755-2302 9901 FAX: +86-755-2302 9901

E-mail: service@cer-mark.com <http://www.cer-mark.com>



TEST RESULT CERTIFICATION

Applicant : Shenzhen Margotan Tech Co., Ltd.
Address : 12F, Bldg.A, Rongchao Binhai Mansion, Haixiu Road No.2021, Xin'an Str, Bao'an District, Shenzhen, China
Manufacturer : Shenzhen Margotan Tech Co., Ltd.
Address : 12F, Bldg.A, Rongchao Binhai Mansion, Haixiu Road No.2021, Xin'an Str, Bao'an District, Shenzhen, China
Product name : Facial Cleansing Brush LED & EMS
Product model : 1008
Trade Name : N/A
Date of Sample Received : Apr. 22, 2020
Testing Period : Apr. 22, 2020 - Apr. 28, 2020

Test Requested:

Based on the verification results of the submitted samples, the results of Lead, Mercury, Cadmium, Hexavalent chromium, Polybrominated biphenyls (PBBs), Polybrominated diphenyl ethers (PBDEs) do not exceed the limits as set by RoHS. Directive 2015/863/EU amending Annex II to Directive 2011/65/EU.

Conclusion

PASS

Prepared by:

Chris Yao

Project Engineer

Checked By:

Judy Qin

Project Supervisor

Approved by:



Technical Director



Revision	Description	Issued Data	Remark
Revision 1.0	Initial Test Report Release	2020/04/28	James Zhou

The results shown in this test report refer only to the sample(s) tested unless otherwise stated and the sample(s) are retained for 30 days only. The document is issued by HUAK, this document cannot be reproduced except in full with our prior written permission. The more details and the authenticity of the report will be confirmed at <http://www.cer-mark.com>.

HUAK Testing Lab TEL : +86-755 2302 9901 FAX : +86-755 2302 9901 E-mail : service@cer-mark.com

Addr: 1/F., Building B2, Junfeng Zhongcheng Zhizao Innovation Park, Heping Community, Fuhai Street, Bao'an District, Shenzhen, Guangdong, China



Test Method:

Heavy Metals and Flame Retardants Content – European Council Directive 2011/65/EU on the Restriction of the Use of Certain Hazardous Substances in Electrical and Electronic Equipment (RoHS)

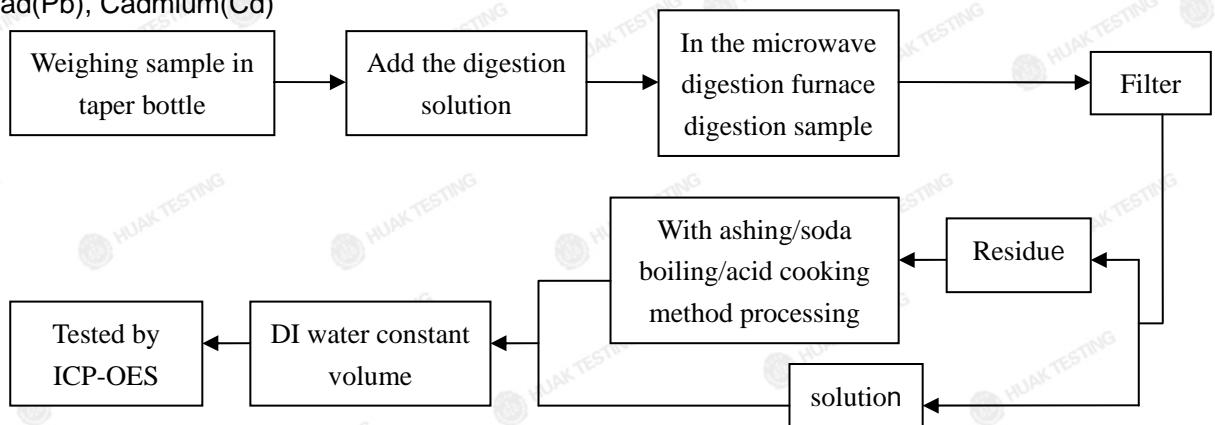
Testing item	Pretreatment method	Measuring instrument	MDL
Lead(Pb)	EN 62321-5:2014 EN 62321-4:2014	ICP-AES	2 mg/kg
Cadmium(Cd)			
Mercury(Hg)			
Chromium(Cr VI)	EN 62321-7-1:2015 EN 62321-7-2:2017 ISO17075-1:2017	UV-Vis	2 mg/kg
PBBs/ PBDEs	IEC 62321-6:2015	GC-MS	5 mg/kg

Phthalates content – European Council Directive 2011/65/EU and Change-Directive 2015/863/EU on the Restriction of the Use of Certain Hazardous Substances in Electrical and Electronic Equipment (RoHS) Test Method: Sample was extracted with organic solvent and then analyzed by Gas Chromatograph Mass Spectrometer.

Testing item	Pretreatment method	Measuring instrument	MDL
DEHP/DBP/BBP/ DIBP	IEC 62321-8:2017	GC-MS	0.003 mg/kg

Test Flow:

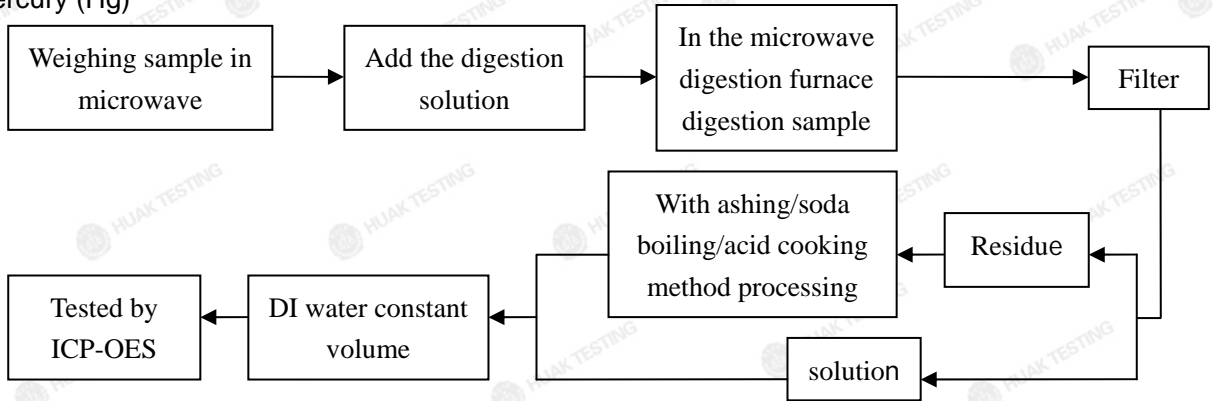
1. Lead(Pb), Cadmium(Cd)



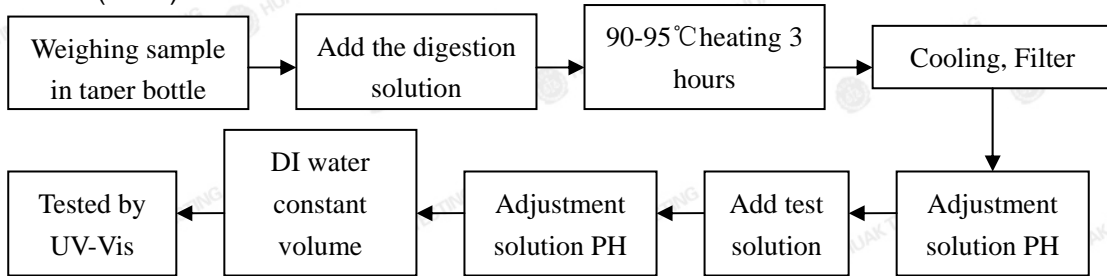
The results shown in this test report refer only to the sample(s) tested unless otherwise stated and the sample(s) are retained for 30 days only. The document is issued by HUAK, this document cannot be reproduced except in full with our prior written permission. The more details and the authenticity of the report will be confirmed at <http://www.cer-mark.com>.



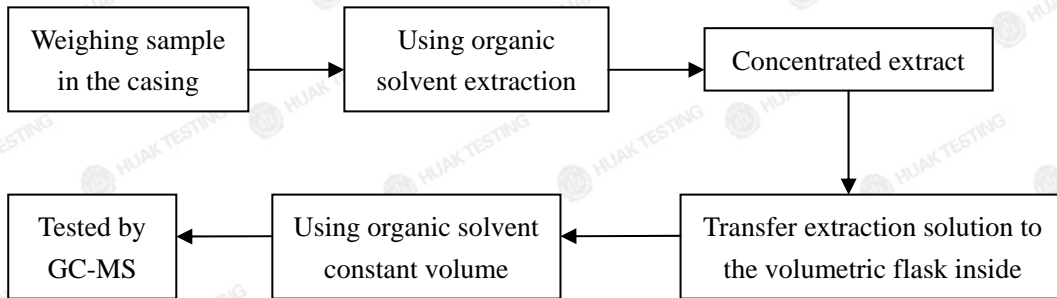
2. Mercury (Hg)



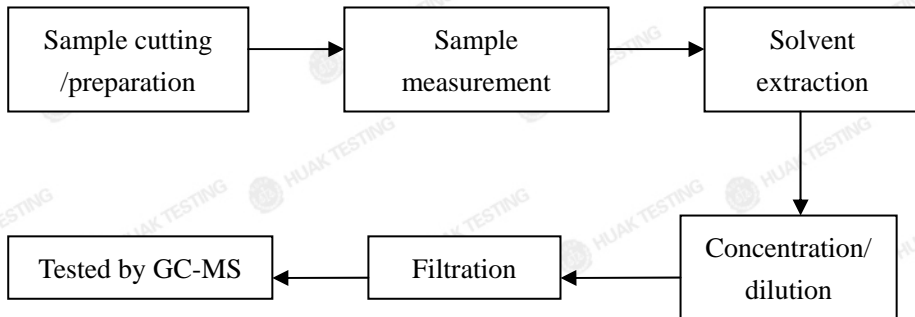
3. Chromium(Cr VI)



4. PBBs/ PBDEs



5. DEHP/ BBP/ DBP/ DIBP



**Test Results:**

Testing Item	Unit	ROHS Limit	Result					
			1	2	3	4	5	6
Lead(Pb)	mg/kg	1000	N.D.	N.D.	N.D.	N.D.	N.D.	N.D.
Cadmium(Cd)	mg/kg	100	N.D.	N.D.	N.D.	N.D.	N.D.	N.D.
Mercury(Hg)	mg/kg	1000	N.D.	N.D.	N.D.	N.D.	N.D.	N.D.
Chromium(Cr VI)	mg/kg	1000	N.D.	N.D.	N.D.	N.D.	N.D.	N.D.
Sum of PBBs/ PBDEs	mg/kg	1000	N.D.	N.D.	N.D.	N.D.	N.D.	N.D.
Monobromobiphenyl	mg/kg	/	N.D.	N.D.	N.D.	N.D.	N.D.	N.D.
Dibromobiphenyl	mg/kg	/	N.D.	N.D.	N.D.	N.D.	N.D.	N.D.
Tribromobiphenyl	mg/kg	/	N.D.	N.D.	N.D.	N.D.	N.D.	N.D.
Tetrabromobiphenyl	mg/kg	/	N.D.	N.D.	N.D.	N.D.	N.D.	N.D.
Pentabromobiphenyl	mg/kg	/	N.D.	N.D.	N.D.	N.D.	N.D.	N.D.
Hexabromobiphenyl	mg/kg	/	N.D.	N.D.	N.D.	N.D.	N.D.	N.D.
Heptabromobiphenyl	mg/kg	/	N.D.	N.D.	N.D.	N.D.	N.D.	N.D.
Octabromobiphenyl	mg/kg	/	N.D.	N.D.	N.D.	N.D.	N.D.	N.D.
Nonabromobiphenyl	mg/kg	/	N.D.	N.D.	N.D.	N.D.	N.D.	N.D.
Decabromobiphenyl	mg/kg	/	N.D.	N.D.	N.D.	N.D.	N.D.	N.D.
Monobromodiphenyl ether	mg/kg	/	N.D.	N.D.	N.D.	N.D.	N.D.	N.D.
Dibromodiphenyl ether	mg/kg	/	N.D.	N.D.	N.D.	N.D.	N.D.	N.D.
Tribromodiphenyl ether	mg/kg	/	N.D.	N.D.	N.D.	N.D.	N.D.	N.D.
Tetrabromodiphenyl ether	mg/kg	/	N.D.	N.D.	N.D.	N.D.	N.D.	N.D.
Pentabromodiphenyl ether	mg/kg	/	N.D.	N.D.	N.D.	N.D.	N.D.	N.D.
Hexabromodiphenyl ether	mg/kg	/	N.D.	N.D.	N.D.	N.D.	N.D.	N.D.
Heptabromodiphenyl ether	mg/kg	/	N.D.	N.D.	N.D.	N.D.	N.D.	N.D.
Octabromodiphenyl ether	mg/kg	/	N.D.	N.D.	N.D.	N.D.	N.D.	N.D.
Nonabromodiphenyl ether	mg/kg	/	N.D.	N.D.	N.D.	N.D.	N.D.	N.D.
Decabromodiphenyl ether	mg/kg	/	N.D.	N.D.	N.D.	N.D.	N.D.	N.D.
Bis-(2-ethylhexyl) Phthalate (DEHP)	mg/kg	1000	N.D.	N.D.	N.D.	N.D.	N.D.	N.D.
Benzylbutyl Phthalate (BBP)	mg/kg	1000	N.D.	N.D.	N.D.	N.D.	N.D.	N.D.
Dibutyl Phthalate (DBP)	mg/kg	1000	N.D.	N.D.	N.D.	N.D.	N.D.	N.D.
Di-isobutyl phthalate (DIBP)	mg/kg	1000	N.D.	N.D.	N.D.	N.D.	N.D.	N.D.

Sample Description:

- 1 Front shell
- 2 Mesochite
- 3 The motor tablet
- 4 Transparent lampshade
- 5 Transparent shell
- 6 Zinc alloy head

The results shown in this test report refer only to the sample(s) tested unless otherwise stated and the sample(s) are retained for 30 days only. The document is issued by HUAKE, this document cannot be reproduced except in full with our prior written permission. The more details and the authenticity of the report will be confirmed at <http://www.cer-mark.com>.



Testing Item	Unit	ROHS Limit	Result					
			7	8	9	10	11	12
Lead(Pb)	mg/kg	1000	N.D.	N.D.	N.D.	N.D.	N.D.	N.D.
Cadmium(Cd)	mg/kg	100	N.D.	N.D.	N.D.	N.D.	N.D.	N.D.
Mercury(Hg)	mg/kg	1000	N.D.	N.D.	N.D.	N.D.	N.D.	N.D.
Chromium(Cr VI)	mg/kg	1000	N.D.	N.D.	N.D.	N.D.	N.D.	N.D.
Sum of PBBs/ PBDEs	mg/kg	1000	N.D.	N.D.	N.D.	N.D.	N.D.	N.D.
Monobromobiphenyl	mg/kg	/	N.D.	N.D.	N.D.	N.D.	N.D.	N.D.
Dibromobiphenyl	mg/kg	/	N.D.	N.D.	N.D.	N.D.	N.D.	N.D.
Tribromobiphenyl	mg/kg	/	N.D.	N.D.	N.D.	N.D.	N.D.	N.D.
Tetrabromobiphenyl	mg/kg	/	N.D.	N.D.	N.D.	N.D.	N.D.	N.D.
Pentabromobiphenyl	mg/kg	/	N.D.	N.D.	N.D.	N.D.	N.D.	N.D.
Hexabromobiphenyl	mg/kg	/	N.D.	N.D.	N.D.	N.D.	N.D.	N.D.
Heptabromobiphenyl	mg/kg	/	N.D.	N.D.	N.D.	N.D.	N.D.	N.D.
Octabromobiphenyl	mg/kg	/	N.D.	N.D.	N.D.	N.D.	N.D.	N.D.
Nonabromobiphenyl	mg/kg	/	N.D.	N.D.	N.D.	N.D.	N.D.	N.D.
Decabromobiphenyl	mg/kg	/	N.D.	N.D.	N.D.	N.D.	N.D.	N.D.
Monobromodiphenyl ether	mg/kg	/	N.D.	N.D.	N.D.	N.D.	N.D.	N.D.
Dibromodiphenyl ether	mg/kg	/	N.D.	N.D.	N.D.	N.D.	N.D.	N.D.
Tribromodiphenyl ether	mg/kg	/	N.D.	N.D.	N.D.	N.D.	N.D.	N.D.
Tetrabromodiphenyl ether	mg/kg	/	N.D.	N.D.	N.D.	N.D.	N.D.	N.D.
Pentabromodiphenyl ether	mg/kg	/	N.D.	N.D.	N.D.	N.D.	N.D.	N.D.
Hexabromodiphenyl ether	mg/kg	/	N.D.	N.D.	N.D.	N.D.	N.D.	N.D.
Heptabromodiphenyl ether	mg/kg	/	N.D.	N.D.	N.D.	N.D.	N.D.	N.D.
Octabromodiphenyl ether	mg/kg	/	N.D.	N.D.	N.D.	N.D.	N.D.	N.D.
Nonabromodiphenyl ether	mg/kg	/	N.D.	N.D.	N.D.	N.D.	N.D.	N.D.
Decabromodiphenyl ether	mg/kg	/	N.D.	N.D.	N.D.	N.D.	N.D.	N.D.
Bis-(2-ethylhexyl) Phthalate (DEHP)	mg/kg	1000	N.D.	N.D.	N.D.	N.D.	N.D.	N.D.
Benzylbutyl Phthalate (BBP)	mg/kg	1000	N.D.	N.D.	N.D.	N.D.	N.D.	N.D.
Dibutyl Phthalate (DBP)	mg/kg	1000	N.D.	N.D.	N.D.	N.D.	N.D.	N.D.
Di-isobutyl phthalate (DIBP)	mg/kg	1000	N.D.	N.D.	N.D.	N.D.	N.D.	N.D.

Sample Description:

- 7 Iron hoop
- 8 N. magnet
- 9 Silicon rubber case
- 10 USB base waterproof ring
- 11 Protective film of lamp shade
- 12 EVA mat

The results shown in this test report refer only to the sample(s) tested unless otherwise stated and the sample(s) are retained for 30 days only. The document is issued by HUAKE, this document cannot be reproduced except in full with our prior written permission. The more details and the authenticity of the report will be confirmed at <http://www.cer-mark.com>.

HUAKE Testing Lab TEL : +86-755 2302 9901 FAX : +86-755 2302 9901 E-mail : service@cer-mark.com

Add: 1/F., Building B2, Junfeng Zhongcheng Zhizao Innovation Park, Heping Community, Fuhai Street, Bao'an District, Shenzhen, Guangdong, China



Testing Item	Unit	ROHS Limit	Result					
			13	14	15	16	17	18
Lead(Pb)	mg/kg	1000	N.D.	N.D.	N.D.	N.D.	N.D.	N.D.
Cadmium(Cd)	mg/kg	100	N.D.	N.D.	N.D.	N.D.	N.D.	N.D.
Mercury(Hg)	mg/kg	1000	N.D.	N.D.	N.D.	N.D.	N.D.	N.D.
Chromium(Cr VI)	mg/kg	1000	N.D.	N.D.	N.D.	N.D.	N.D.	N.D.
Sum of PBBs/ PBDEs	mg/kg	1000	N.D.	N.D.	N.D.	N.D.	N.D.	N.D.
Monobromobiphenyl	mg/kg	/	N.D.	N.D.	N.D.	N.D.	N.D.	N.D.
Dibromobiphenyl	mg/kg	/	N.D.	N.D.	N.D.	N.D.	N.D.	N.D.
Tribromobiphenyl	mg/kg	/	N.D.	N.D.	N.D.	N.D.	N.D.	N.D.
Tetrabromobiphenyl	mg/kg	/	N.D.	N.D.	N.D.	N.D.	N.D.	N.D.
Pentabromobiphenyl	mg/kg	/	N.D.	N.D.	N.D.	N.D.	N.D.	N.D.
Hexabromobiphenyl	mg/kg	/	N.D.	N.D.	N.D.	N.D.	N.D.	N.D.
Heptabromobiphenyl	mg/kg	/	N.D.	N.D.	N.D.	N.D.	N.D.	N.D.
Octabromobiphenyl	mg/kg	/	N.D.	N.D.	N.D.	N.D.	N.D.	N.D.
Nonabromobiphenyl	mg/kg	/	N.D.	N.D.	N.D.	N.D.	N.D.	N.D.
Decabromobiphenyl	mg/kg	/	N.D.	N.D.	N.D.	N.D.	N.D.	N.D.
Monobromodiphenyl ether	mg/kg	/	N.D.	N.D.	N.D.	N.D.	N.D.	N.D.
Dibromodiphenyl ether	mg/kg	/	N.D.	N.D.	N.D.	N.D.	N.D.	N.D.
Tribromodiphenyl ether	mg/kg	/	N.D.	N.D.	N.D.	N.D.	N.D.	N.D.
Tetrabromodiphenyl ether	mg/kg	/	N.D.	N.D.	N.D.	N.D.	N.D.	N.D.
Pentabromodiphenyl ether	mg/kg	/	N.D.	N.D.	N.D.	N.D.	N.D.	N.D.
Hexabromodiphenyl ether	mg/kg	/	N.D.	N.D.	N.D.	N.D.	N.D.	N.D.
Heptabromodiphenyl ether	mg/kg	/	N.D.	N.D.	N.D.	N.D.	N.D.	N.D.
Octabromodiphenyl ether	mg/kg	/	N.D.	N.D.	N.D.	N.D.	N.D.	N.D.
Nonabromodiphenyl ether	mg/kg	/	N.D.	N.D.	N.D.	N.D.	N.D.	N.D.
Decabromodiphenyl ether	mg/kg	/	N.D.	N.D.	N.D.	N.D.	N.D.	N.D.
Bis-(2-ethylhexyl) Phthalate (DEHP)	mg/kg	1000	N.D.	N.D.	N.D.	N.D.	N.D.	N.D.
Benzylbutyl Phthalate (BBP)	mg/kg	1000	N.D.	N.D.	N.D.	N.D.	N.D.	N.D.
Dibutyl Phthalate (DBP)	mg/kg	1000	N.D.	N.D.	N.D.	N.D.	N.D.	N.D.
Di-isobutyl phthalate (DIBP)	mg/kg	1000	N.D.	N.D.	N.D.	N.D.	N.D.	N.D.

Sample Description:

- 13 O-ring seal
- 14 Thermal conductive silicone
- 15 Double faced adhesive tape
- 16 Screw
- 17 PCBA motherboard components
- 18 PCBA lamp plate

The results shown in this test report refer only to the sample(s) tested unless otherwise stated and the sample(s) are retained for 30 days only. The document is issued by HUAKE, this document cannot be reproduced except in full with our prior written permission. The more details and the authenticity of the report will be confirmed at <http://www.cer-mark.com>.

HUAKE Testing Lab TEL : +86-755 2302 9901 FAX : +86-755 2302 9901 E-mail : service@cer-mark.com

Add: 1/F., Building B2, Junfeng Zhongcheng Zhizao Innovation Park, Heping Community, Fuhai Street, Bao'an District, Shenzhen, Guangdong, China



Testing Item	Unit	ROHS Limit	Result					
			19	20	21	22	23	24
Lead(Pb)	mg/kg	1000	N.D.	N.D.	N.D.	N.D.	N.D.	N.D.
Cadmium(Cd)	mg/kg	100	N.D.	N.D.	N.D.	N.D.	N.D.	N.D.
Mercury(Hg)	mg/kg	1000	N.D.	N.D.	N.D.	N.D.	N.D.	N.D.
Chromium(Cr VI)	mg/kg	1000	N.D.	N.D.	N.D.	N.D.	N.D.	N.D.
Sum of PBBs/ PBDEs	mg/kg	1000	N.D.	N.D.	N.D.	N.D.	N.D.	N.D.
Monobromobiphenyl	mg/kg	/	N.D.	N.D.	N.D.	N.D.	N.D.	N.D.
Dibromobiphenyl	mg/kg	/	N.D.	N.D.	N.D.	N.D.	N.D.	N.D.
Tribromobiphenyl	mg/kg	/	N.D.	N.D.	N.D.	N.D.	N.D.	N.D.
Tetrabromobiphenyl	mg/kg	/	N.D.	N.D.	N.D.	N.D.	N.D.	N.D.
Pentabromobiphenyl	mg/kg	/	N.D.	N.D.	N.D.	N.D.	N.D.	N.D.
Hexabromobiphenyl	mg/kg	/	N.D.	N.D.	N.D.	N.D.	N.D.	N.D.
Heptabromobiphenyl	mg/kg	/	N.D.	N.D.	N.D.	N.D.	N.D.	N.D.
Octabromobiphenyl	mg/kg	/	N.D.	N.D.	N.D.	N.D.	N.D.	N.D.
Nonabromobiphenyl	mg/kg	/	N.D.	N.D.	N.D.	N.D.	N.D.	N.D.
Decabromobiphenyl	mg/kg	/	N.D.	N.D.	N.D.	N.D.	N.D.	N.D.
Monobromodiphenyl ether	mg/kg	/	N.D.	N.D.	N.D.	N.D.	N.D.	N.D.
Dibromodiphenyl ether	mg/kg	/	N.D.	N.D.	N.D.	N.D.	N.D.	N.D.
Tribromodiphenyl ether	mg/kg	/	N.D.	N.D.	N.D.	N.D.	N.D.	N.D.
Tetrabromodiphenyl ether	mg/kg	/	N.D.	N.D.	N.D.	N.D.	N.D.	N.D.
Pentabromodiphenyl ether	mg/kg	/	N.D.	N.D.	N.D.	N.D.	N.D.	N.D.
Hexabromodiphenyl ether	mg/kg	/	N.D.	N.D.	N.D.	N.D.	N.D.	N.D.
Heptabromodiphenyl ether	mg/kg	/	N.D.	N.D.	N.D.	N.D.	N.D.	N.D.
Octabromodiphenyl ether	mg/kg	/	N.D.	N.D.	N.D.	N.D.	N.D.	N.D.
Nonabromodiphenyl ether	mg/kg	/	N.D.	N.D.	N.D.	N.D.	N.D.	N.D.
Decabromodiphenyl ether	mg/kg	/	N.D.	N.D.	N.D.	N.D.	N.D.	N.D.
Bis-(2-ethylhexyl) Phthalate (DEHP)	mg/kg	1000	N.D.	N.D.	N.D.	N.D.	N.D.	N.D.
Benzylbutyl Phthalate (BBP)	mg/kg	1000	N.D.	N.D.	N.D.	N.D.	N.D.	N.D.
Dibutyl Phthalate (DBP)	mg/kg	1000	N.D.	N.D.	N.D.	N.D.	N.D.	N.D.
Di-isobutyl phthalate (DIBP)	mg/kg	1000	N.D.	N.D.	N.D.	N.D.	N.D.	N.D.

Sample Description:

- 19 PCBA heating plate
- 20 Motor
- 21 Lithium battery
- 22 3pin codirectional terminal line
- 23 3 pin terminal
- 24 Double ended iron ring wire

The results shown in this test report refer only to the sample(s) tested unless otherwise stated and the sample(s) are retained for 30 days only. The document is issued by HUAKE, this document cannot be reproduced except in full with our prior written permission. The more details and the authenticity of the report will be confirmed at <http://www.cer-mark.com>.

HUAKE Testing Lab TEL : +86-755 2302 9901 FAX : +86-755 2302 9901 E-mail : service@cer-mark.com

Add: 1/F., Building B2, Junfeng Zhongcheng Zhizao Innovation Park, Heping Community, Fuhai Street, Bao'an District, Shenzhen, Guangdong, China



Notes:

1mg/kg=1ppm = 0.0001%

N.D. = Not Detected (<MDL)

MDL = Method Detection Limit

/=Not Regulated

---=Not Applicable

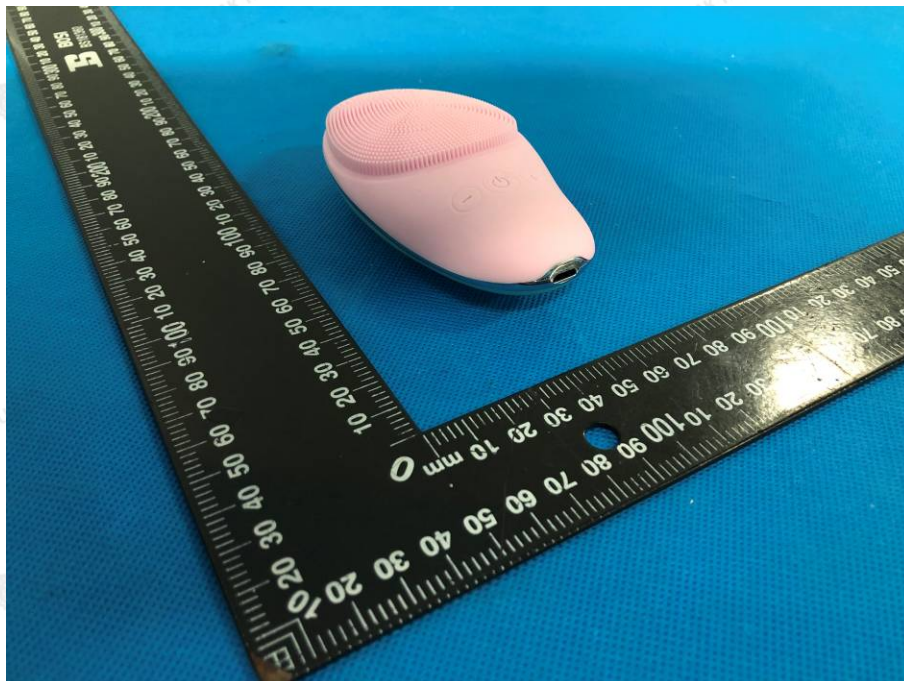
Breakdown of product



Sample photo: 1



Sample photo: 2





Sample photo: 3

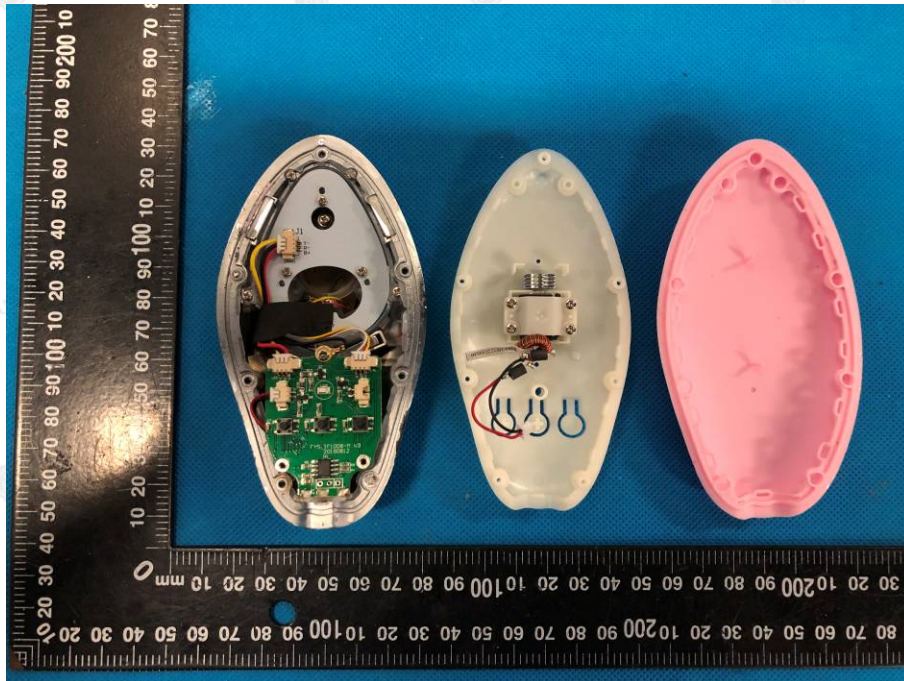


Sample photo: 4





Sample photo: 5

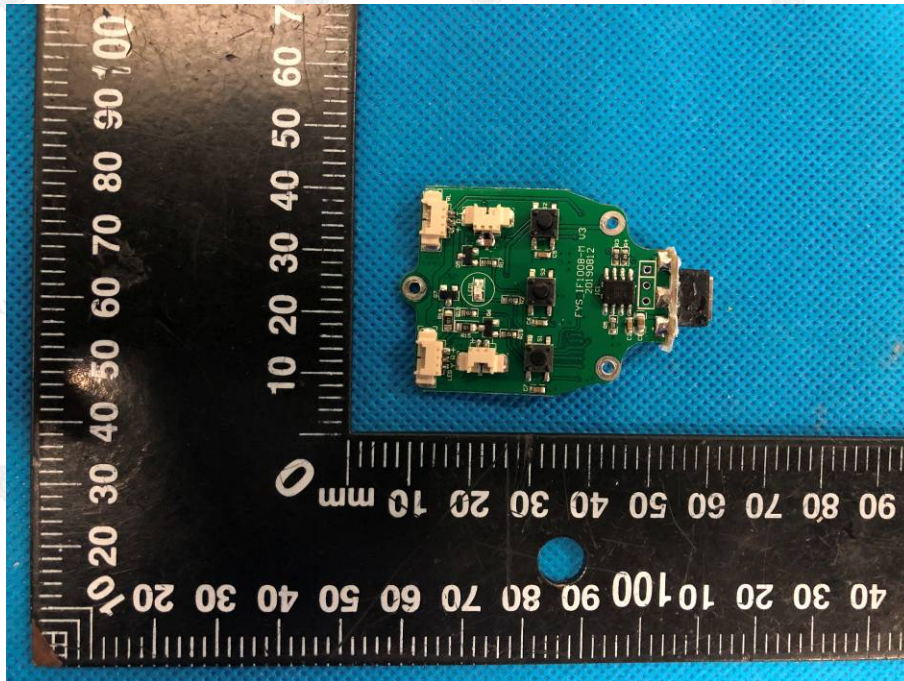


Sample photo: 6

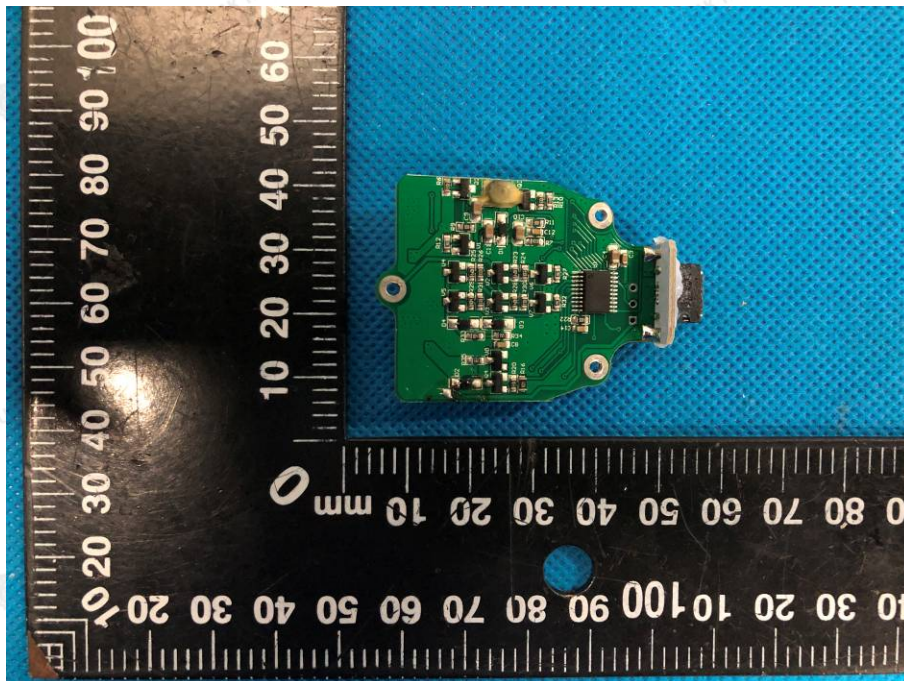




Sample photo: 7

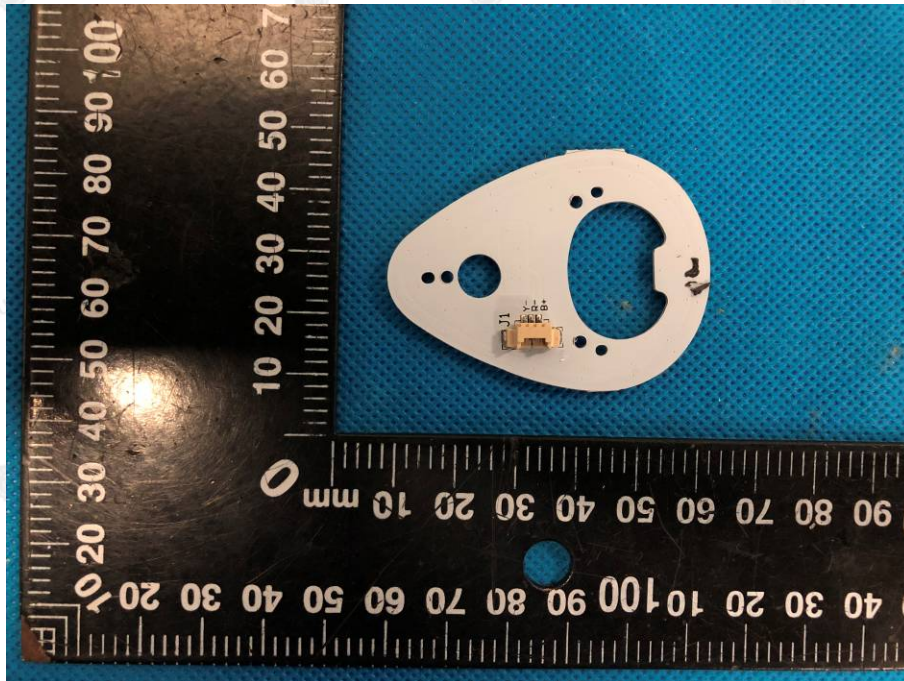


Sample photo: 8

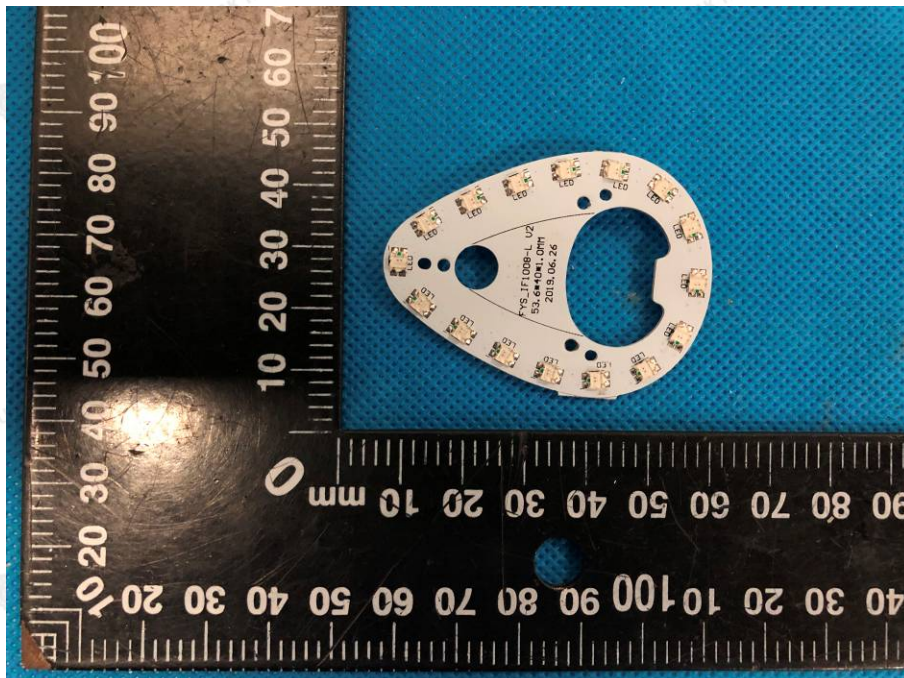




Sample photo: 9



Sample photo: 10



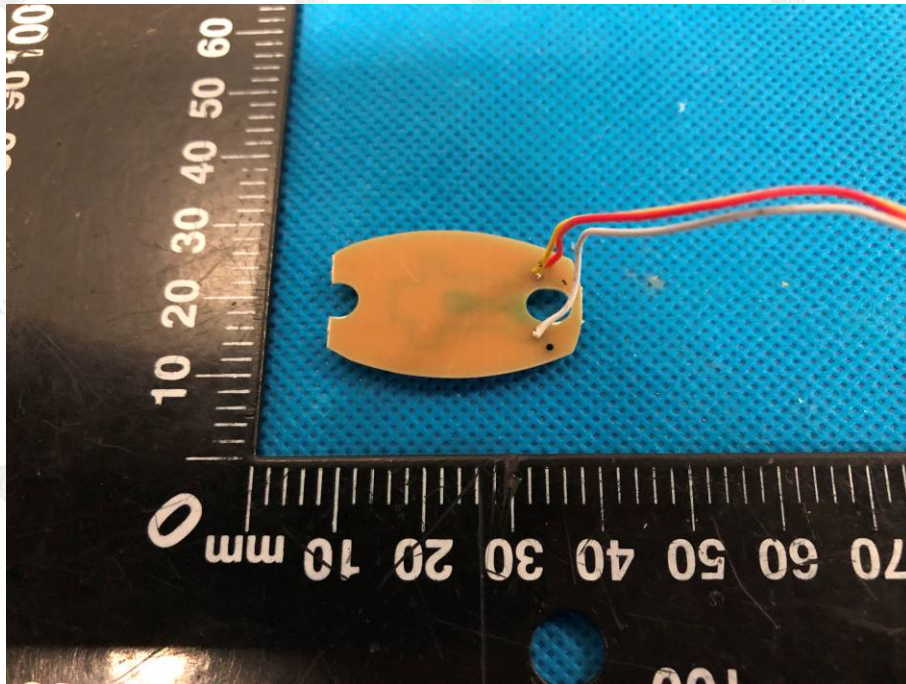
The results shown in this test report refer only to the sample(s) tested unless otherwise stated and the sample(s) are retained for 30 days only. The document is issued by HUAK, this document cannot be reproduced except in full with our prior written permission. The more details and the authenticity of the report will be confirmed at <http://www.cer-mark.com>.

HUAK Testing Lab TEL : +86-755 2302 9901 FAX : +86-755 2302 9901 E-mail : service@cer-mark.com

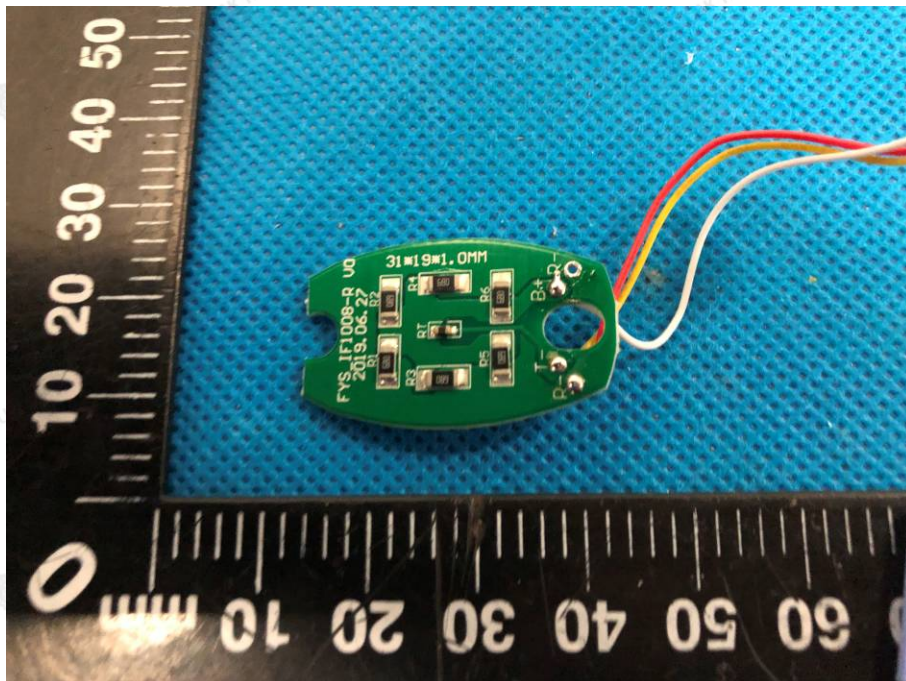
Add: 1/F., Building B2, Junfeng Zhongcheng Zhizao Innovation Park, Heping Community, Fuhai Street, Bao'an District, Shenzhen, Guangdong, China



Sample photo: 11



Sample photo: 12



.....End of Report.....