

Verification Report No.: CANEC24019415802 Date: Oct 25, 2024 Page 1 of 15

Client Name: MITECH ELECTRONICS CO., LIMITED
 Client Address: 6/F, BUILDING 3, JINCHI EXHIBITION INNOVATION PARK, 59 HAOYE ROAD, FUHAI STREET, BAO'AN DISTRICT, SHENZHEN, CHINA
 Sample Name: Overhead Earphone
 Tested Basic Model No.: INTENSO OVER-EAR O400HA
 Client Ref. Information: G4,G1,G2,G3,G5,G6,G7,G8,G9,G10
 Manufacturer: MiTech Electronics Co., Limited
 Manufacturer Address: 6/F, Building 3, Jinchi Exhibition Innovation Park, 59 Haoye Road, Fuhai Street, Bao'An District, Shenzhen, China
 The above sample(s) and information were provided by the client.

SGS Job No.: SZP24-039332
 Sample Receiving Date: Sep 02, 2024
 Verification Period: Sep 02, 2024 ~ Sep 26, 2024
 Verification Requested: With reference to RoHS Directive (EU) 2015/863 amending 2011/65/EU.
 Verification Method(s): Please refer to next page(s).
 Verification Result(s): Please refer to next page(s).

Test Result Summary:

Test Items	Conclusion
EU RoHS Directive (EU) 2015/863 amending Annex II to Directive 2011/65/EU - Lead, Mercury, Cadmium, Hexavalent chromium, Polybrominated biphenyls (PBB), Polybrominated diphenyl ethers (PBDE), Bis(2-ethylhexyl) phthalate (DEHP), Butyl benzyl phthalate (BBP), Dibutyl phthalate (DBP) and Diisobutyl phthalate (DIBP)	Pass

Signed for and on behalf of
 SGS-CSTC Standards Technical Services Co., Ltd. Guangzhou Branch

Tyler Zhang

Tyler-Y Zhang
 Approved Signatory



Unless otherwise agreed in writing, this document is issued by the Company subject to its General Conditions of Service printed overleaf, available on request or accessible at <https://www.sgs.com/en/Terms-and-Conditions>. Attention is drawn to the limitation of liability, indemnification and jurisdiction issues defined therein. Any holder of this document is advised that information contained hereon reflects the Company's findings at the time of its intervention only and within the limits of Client's instructions, if any. The Company's sole responsibility is to its Client and this document does not exonerate parties to a transaction from exercising all their rights and obligations under the transaction documents. This document cannot be reproduced except in full, without prior written approval of the Company. Any unauthorized alteration, forgery or falsification of the content or appearance of this document is unlawful and offenders may be prosecuted to the fullest extent of the law. Unless otherwise stated the results shown in this test report refer only to the sample(s) tested.
 Attention: To check the authenticity of testing /inspection report & certificate, please contact us at telephone: (86-755) 8307 1443, or email: CN.Doccheck@sgs.com

SGS-CSTC Standards Technical Services Co., Ltd.
 Guangzhou Branch Technical Services Laboratory

No.198, Kezhu Road, Science City, Economic & Technological Development Area, Guangzhou, Guangdong, China 510663
 中国·广东·广州高新技术产业开发区科学城科珠路198号 邮编: 510663

t (86-20) 82155555 www.sgsgroup.com.cn
 t (86-20) 82155555 sgs.china@sgs.com

Verification Method(s):

1. With reference to IEC 62321-2:2021, disassembly and disjointment were performed for the submitted samples.
2. With reference to IEC 62321-1:2013, tests were performed for the samples indicated by the photos in this report.
 - (1) With reference to IEC 62321-3-1:2013, screening by EDXRF spectroscopy.
 - (2) Wet chemical test method: With reference to IEC 62321-4:2013+A1:2017, IEC62321-5:2013, IEC 62321-7-1:2015, IEC 62321-7-2:2017, IEC 62321-12:2023, IEC 62321-6:2015 and IEC62321-8:2017 , analyzed by ICP-OES,UV-Vis and GC-MS.



SGS-CSTC Standards Technical Services Co., Ltd.
Guangzhou Branch / 广州分公司 / 检验检测专用章

Unless otherwise agreed in writing, this document is issued by the Company subject to its General Conditions of Service printed overleaf, available on request or accessible at <https://www.sgs.com/en/Terms-and-Conditions>. Attention is drawn to the limitation of liability, indemnification and jurisdiction issues defined therein. Any holder of this document is advised that information contained hereon reflects the Company's findings at the time of its intervention only and within the limits of Client's instructions, if any. The Company's sole responsibility is to its Client and this document does not exonerate parties to a transaction from exercising all their rights and obligations under the transaction documents. This document cannot be reproduced except in full, without prior written approval of the Company. Any unauthorized alteration, forgery or falsification of the content or appearance of this document is unlawful and offenders may be prosecuted to the fullest extent of the law. Unless otherwise stated the results shown in this test report refer only to the sample(s) tested.

Attention: To check the authenticity of testing / inspection report & certificate, please contact us at telephone: (86-755) 8307 1443, or email: CN.Doccheck@sgs.com

No.198, Kezhu Road, Science City, Economic & Technological Development Area, Guangzhou, Guangdong, China 510663
中国·广东·广州高新技术产业开发区科学城科珠路198号 邮编: 510663

t (86-20) 82155555 www.sgsgroup.com.cn
t (86-20) 82155555 sgs.china@sgs.com

Verification Part Description:

SN ID	Sample No.	SGS Sample ID	Description
SN1	A1	CAN24-0194158-0001.C001	Black material sheet
SN2	A2	CAN24-0194158-0001.C002	Black plastic part
SN3	A3	CAN24-0194158-0001.C003	Black plastic part
SN4	A4	CAN24-0194158-0001.C004	White sponge sheet
SN5	A5	CAN24-0194158-0001.C005	Black sponge sheet
SN6	A6	CAN24-0194158-0001.C006	Black adhesive sponge sheet
SN7	A7	CAN24-0194158-0001.C007	Transparent adhesive plastic sheet
SN8	A8	CAN24-0194158-0001.C008	Transparent adhesive plastic sheet
SN9	A9	CAN24-0194158-0001.C009	Black surfaced metal screw
SN10	A10	CAN24-0194158-0001.C010	Silvery metal screw
SN11	A11	CAN24-0194158-0001.C011	Black plastic part
SN12	A12	CAN24-0194158-0001.C012	Black plastic part with grey printing
SN13	A13	CAN24-0194158-0001.C013	Black plastic part
SN14	A14	CAN24-0194158-0001.C014	Black material sheet
SN15	A15	CAN24-0194158-0001.C015	Transparent adhesive plastic ring
SN16	A16	CAN24-0194158-0001.C016	Black adhesive fibre sheet
SN17	A17	CAN24-0194158-0001.C017	Blue sponge ring
SN18	A18	CAN24-0194158-0001.C018	Black plastic ring
SN19	A19	CAN24-0194158-0001.C019	Black material sheet
SN20	A20	CAN24-0194158-0001.C020	Black plastic shell with white printing
SN21	A21	CAN24-0194158-0001.C021	Black plastic button
SN22	A22	CAN24-0194158-0001.C022	Grey glue
SN23	A23	CAN24-0194158-0001.C023	Red plastic (wire insulation)
SN24	A24	CAN24-0194158-0001.C024	Black plastic (wire insulation)
SN25	A25	CAN24-0194158-0001.C025	Green "PCB"
SN26	A26	CAN24-0194158-0001.C026	Silvery metal solder
SN27	A27	CAN24-0194158-0001.C027	Black plastic button
SN28	A28	CAN24-0194158-0001.C028	Green "PCB"
SN29	A29	CAN24-0194158-0001.C029	Black plastic shell
SN30	A30	CAN24-0194158-0001.C030	Black sponge sheet
SN31	A31	CAN24-0194158-0001.C031	Silvery metal solder
SN32	A32	CAN24-0194158-0001.C032	Beige plastic part
SN33	A33	CAN24-0194158-0001.C033	Black adhesive sponge sheet
SN34	A34	CAN24-0194158-0001.C034	Black plastic button
SN35	A35	CAN24-0194158-0001.C035	Golden metal pin
SN36	A36	CAN24-0194158-0001.C036	Dark grey plastic part
SN37	A37	CAN24-0194158-0001.C037	Transparent glue
SN38	A38	CAN24-0194158-0001.C038	Green "PCB"
SN39	A39	CAN24-0194158-0001.C039	Silvery metal solder
SN40	A40	CAN24-0194158-0001.C040	Black plastic ring
SN41	A41	CAN24-0194158-0001.C041	White plastic (cable jacket)
SN42	A42	CAN24-0194158-0001.C042	Green "PCB"
SN43	A43	CAN24-0194158-0001.C043	Black glue
SN44	A44	CAN24-0194158-0001.C044	Silvery metal solder
SN45	A45	CAN24-0194158-0001.C045	Black plastic part
SN46	A46	CAN24-0194158-0001.C046	Black plastic (cable jacket)
SN47	A47	CAN24-0194158-0001.C047	Black rubber part
SN48	A48	CAN24-0194158-0001.C048	Green "PCB"



Unless otherwise agreed in writing, this document is issued by the Company subject to its General Conditions of Service printed overleaf, available on request or accessible at <https://www.sgs.com/en/Terms-and-Conditions>. Attention is drawn to the limitation of liability, indemnification and jurisdiction issues defined therein. Any holder of this document is advised that information contained hereon reflects the Company's findings at the time of its intervention only and within the limits of Client's instructions, if any. The Company's sole responsibility is to its Client and this document does not exonerate parties to a transaction from exercising all their rights and obligations under the transaction documents. This document cannot be reproduced except in full, without prior written approval of the Company. Any unauthorized alteration, forgery or falsification of the content or appearance of this document is unlawful and offenders may be prosecuted to the fullest extent of the law. Unless otherwise stated the results shown in this test report refer only to the sample(s) tested.

Attention: To check the authenticity of testing / inspection report & certificate, please contact us at telephone: (86-755) 8307 1443, or email: CN.Doccheck@sgs.com

SN ID	Sample No.	SGS Sample ID	Description
SN49	A49	CAN24-0194158-0001.C049	Black plastic part
SN50	A50	CAN24-0194158-0001.C050	Silvery metal solder
SN51	A51	CAN24-0194158-0001.C051	Black plastic (cable jacket)
SN52	A52	CAN24-0194158-0001.C052	Black plastic shell
SN53	A53	CAN24-0194158-0001.C053	Golden metal pin
SN54	A54	CAN24-0194158-0001.C054	Golden metal part
SN55	A55	CAN24-0194158-0001.C055	Golden metal part
SN56	A56	CAN24-0194158-0001.C056	Silvery metal solder
SN57	A57	CAN24-0194158-0001.C057	Black plastic part
SN58	A58	CAN24-0194158-0001.C058	Silvery metal frame
SN59	A59	CAN24-0194158-0001.C059	Black plastic shell
SN60	A60	CAN24-0194158-0001.C060	Black plastic (cable jacket)
SN61	A61	CAN24-0194158-0001.C061	White plastic (wire insulation)
SN62	A62	CAN24-0194158-0001.C062	Red plastic (wire insulation)
SN63	A63	CAN24-0194158-0001.C063	Black plastic (wire insulation)
SN64	A64	CAN24-0194158-0001.C064	Translucent plastic part
SN65	A65	CAN24-0194158-0001.C065	Blue "PCB"
SN66	A66	CAN24-0194158-0001.C066	Silvery metal solder
SN67	A67	CAN24-0194158-0001.C067	Dark grey plastic part
SN68	A68	CAN24-0194158-0001.C068	Silvery/golden metal pin
SN69	A69	CAN24-0194158-0001.C069	Silvery metal pin



SGS-CTI Standards Technical Services Co., Ltd.
Guangzhou Branch / 广州分公司

Unless otherwise agreed in writing, this document is issued by the Company subject to its General Conditions of Service printed overleaf, available on request or accessible at <https://www.sgs.com/en/Terms-and-Conditions>. Attention is drawn to the limitation of liability, indemnification and jurisdiction issues defined therein. Any holder of this document is advised that information contained hereon reflects the Company's findings at the time of its intervention only and within the limits of Client's instructions, if any. The Company's sole responsibility is to its Client and this document does not exonerate parties to a transaction from exercising all their rights and obligations under the transaction documents. This document cannot be reproduced except in full, without prior written approval of the Company. Any unauthorized alteration, forgery or falsification of the content or appearance of this document is unlawful and offenders may be prosecuted to the fullest extent of the law. Unless otherwise stated the results shown in this test report refer only to the sample(s) tested.

Attention: To check the authenticity of testing / inspection report & certificate, please contact us at telephone: (86-755) 8307 1443, or email: CN.Doccheck@sgs.com

No.198, Kezhu Road, Science City, Economic & Technological Development Area, Guangzhou, Guangdong, China 510663
中国·广东·广州高新技术产业开发区科学城科珠路198号 邮编: 510663

t (86-20) 82155555 www.sgsgroup.com.cn
t (86-20) 82155555 sgs.china@sgs.com

Verification Result(s):

In accordance with the result of material risk assessment, the following disjointed parts in the submitted sample have been verified. (Unless otherwise specified, the unit is mg/kg).

Test Item(s)	A1	A2	A3	A4	A5	A6	A7	A8
Pb	BL	BL	BL	BL	BL	BL	BL	BL
Hg	BL	BL	BL	BL	BL	BL	BL	BL
Cd	BL	BL	BL	BL	BL	BL	BL	BL
Cr(VI)▼	BL	BL	BL	BL	BL	BL	BL	BL
PBB	BL	BL	BL	BL	BL	BL	BL	BL
PBDE	BL	BL	BL	BL	BL	BL	BL	BL
DEHP	BL	BL	BL	ND	ND	ND	ND	ND
BBP	BL	BL	BL	ND	ND	ND	ND	ND
DBP	BL	BL	BL	ND	ND	ND	ND	ND
DIBP	BL	BL	BL	ND	ND	ND	ND	ND
Conclusion	PASS	PASS	PASS	PASS	PASS	PASS	PASS	PASS

Test Item(s)	A9	A10	A11	A12	A13	A14	A15	A16
Pb	BL	BL	BL	BL	BL	BL	BL	BL
Hg	BL	BL	BL	BL	BL	BL	BL	BL
Cd	BL	BL	BL	BL	BL	BL	BL	BL
Cr(VI)▼	ND	BL	BL	BL	BL	BL	BL	BL
PBB	---	---	BL	BL	BL	BL	BL	BL
PBDE	---	---	BL	BL	BL	BL	BL	BL
DEHP	---	---	BL	BL	BL	BL	ND	ND
BBP	---	---	BL	BL	BL	BL	ND	ND
DBP	---	---	BL	BL	BL	BL	ND	ND
DIBP	---	---	BL	BL	BL	BL	ND	ND
Conclusion	PASS	PASS	PASS	PASS	PASS	PASS	PASS	PASS

Test Item(s)	A17	A18	A19	A20	A21	A22	A23	A24
Pb	BL	BL	BL	BL	BL	BL	BL	BL
Hg	BL	BL	BL	BL	BL	BL	BL	BL
Cd	BL	BL	BL	BL	BL	BL	BL	BL
Cr(VI)▼	BL	BL	BL	BL	BL	BL	BL	BL
PBB	BL	BL	BL	BL	BL	BL	BL	BL
PBDE	BL	BL	BL	BL	BL	BL	BL	BL
DEHP	ND	BL	BL	BL	BL	ND	ND	ND
BBP	ND	BL	BL	BL	BL	ND	ND	ND
DBP	ND	BL	BL	BL	BL	ND	ND	ND
DIBP	ND	BL	BL	BL	BL	ND	ND	ND
Conclusion	PASS	PASS	PASS	PASS	PASS	PASS	PASS	PASS

Test Item(s)	A25	A26	A27	A28	A29	A30	A31	A32
Pb	BL	BL	BL	BL	BL	BL	BL	BL
Hg	BL	BL	BL	BL	BL	BL	BL	BL
Cd	BL	BL	BL	BL	BL	BL	BL	BL
Cr(VI)▼	BL	BL	BL	BL	BL	BL	BL	BL



SGS-CSTC Standards Technical Services Co., Ltd.
Guangzhou Branch Technical Laboratory

Unless otherwise agreed in writing, this document is issued by the Company subject to its General Conditions of Service printed overleaf, available on request or accessible at <https://www.sgs.com/en/Terms-and-Conditions>. Attention is drawn to the limitation of liability, indemnification and jurisdiction issues defined therein. Any holder of this document is advised that information contained hereon reflects the Company's findings at the time of its intervention only and within the limits of Client's instructions, if any. The Company's sole responsibility is to its Client and this document does not exonerate parties to a transaction from exercising all their rights and obligations under the transaction documents. This document cannot be reproduced except in full, without prior written approval of the Company. Any unauthorized alteration, forgery or falsification of the content or appearance of this document is unlawful and offenders may be prosecuted to the fullest extent of the law. Unless otherwise stated the results shown in this test report refer only to the sample(s) tested.
Attention: To check the authenticity of testing / inspection report & certificate, please contact us at telephone: (86-755) 8307 1443, or email: CN.Doccheck@sgs.com

No.198, Kezhu Road, Science City, Economic & Technological Development Area, Guangzhou, Guangdong, China 510663
中国·广东·广州高新技术产业开发区科学城珠路198号 邮编: 510663

t (86-20) 82155555 www.sgsgroup.com.cn
t (86-20) 82155555 sgs.china@sgs.com

Test Item(s)	A25	A26	A27	A28	A29	A30	A31	A32
PBB	ND	---	BL	BL	BL	BL	---	BL
PBDE	ND	---	BL	BL	BL	BL	---	BL
DEHP	ND	---	BL	BL	BL	ND	---	BL
BBP	ND	---	BL	BL	BL	ND	---	BL
DBP	ND	---	BL	BL	BL	ND	---	BL
DIBP	ND	---	BL	BL	BL	ND	---	BL
Conclusion	PASS	PASS	PASS	PASS	PASS	PASS	PASS	PASS

Test Item(s)	A33	A34	A35	A36	A37	A38	A39	A40
Pb	BL	BL	BL	BL	BL	BL	BL	BL
Hg	BL	BL	BL	BL	BL	BL	BL	BL
Cd	BL	BL	BL	BL	BL	BL	BL	BL
Cr(VI)▼	BL	BL	BL	BL	BL	BL	BL	BL
PBB	BL	BL	---	BL	BL	ND	---	BL
PBDE	BL	BL	---	BL	BL	ND	---	BL
DEHP	ND	BL	---	BL	ND	ND	---	BL
BBP	ND	BL	---	BL	ND	ND	---	BL
DBP	ND	BL	---	BL	ND	ND	---	BL
DIBP	ND	BL	---	BL	ND	ND	---	BL
Conclusion	PASS	PASS	PASS	PASS	PASS	PASS	PASS	PASS

Test Item(s)	A41	A42	A43	A44	A45	A46	A47	A48
Pb	BL	BL	BL	BL	BL	BL	BL	BL
Hg	BL	BL	BL	BL	BL	BL	BL	BL
Cd	BL	BL	BL	BL	BL	BL	BL	BL
Cr(VI)▼	BL	BL	BL	BL	BL	BL	BL	BL
PBB	BL	BL	BL	---	BL	BL	BL	BL
PBDE	BL	BL	BL	---	BL	BL	BL	BL
DEHP	ND	BL	ND	---	BL	ND	ND	BL
BBP	ND	BL	ND	---	BL	ND	ND	BL
DBP	ND	BL	ND	---	BL	ND	ND	BL
DIBP	ND	BL	ND	---	BL	ND	ND	BL
Conclusion	PASS	PASS	PASS	PASS	PASS	PASS	PASS	PASS

Test Item(s)	A49	A50	A51	A52	A53	A54	A55	A56
Pb	BL	BL	BL	BL	OL▲	BL	BL	BL
Hg	BL	BL	BL	BL	BL	BL	BL	BL
Cd	BL	BL	BL	BL	BL	BL	BL	BL
Cr(VI)▼	BL	BL	BL	BL	BL	BL	BL	BL
PBB	BL	---	BL	BL	---	---	---	---
PBDE	BL	---	BL	BL	---	---	---	---
DEHP	BL	---	ND	BL	---	---	---	---
BBP	BL	---	ND	BL	---	---	---	---
DBP	BL	---	ND	BL	---	---	---	---
DIBP	BL	---	ND	BL	---	---	---	---
Conclusion	PASS	PASS	PASS	PASS	PASS	PASS	PASS	PASS



Unless otherwise agreed in writing, this document is issued by the Company subject to its General Conditions of Service printed overleaf, available on request or accessible at <https://www.sgs.com/en/Terms-and-Conditions>. Attention is drawn to the limitation of liability, indemnification and jurisdiction issues defined therein. Any holder of this document is advised that information contained hereon reflects the Company's findings at the time of its intervention only and within the limits of Client's instructions, if any. The Company's sole responsibility is to its Client and this document does not exonerate parties to a transaction from exercising all their rights and obligations under the transaction documents. This document cannot be reproduced except in full, without prior written approval of the Company. Any unauthorized alteration, forgery or falsification of the content or appearance of this document is unlawful and offenders may be prosecuted to the fullest extent of the law. Unless otherwise stated the results shown in this test report refer only to the sample(s) tested.

Attention: To check the authenticity of testing / inspection report & certificate, please contact us at telephone: (86-755) 8307 1443, or email: CN.Doccheck@sgs.com

SGS-CSTC Standards Technical Services Co., Ltd.
Guangzhou Branch / 广州分公司

No.198, Kezhu Road, Science City, Economic & Technological Development Area, Guangzhou, Guangdong, China 510663
中国·广东·广州高新技术产业开发区科学城科珠路198号 邮编: 510663

t (86-20) 82155555 www.sgsgroup.com.cn
t (86-20) 82155555 sgs.china@sgs.com

Test Item(s)	A57	A58	A59	A60	A61	A62	A63	A64
Pb	BL	BL	BL	BL	BL	BL	BL	BL
Hg	BL	BL	BL	BL	BL	BL	BL	BL
Cd	BL	BL	BL	BL	BL	BL	BL	BL
Cr(VI) ▼	BL	ND	BL	BL	BL	BL	BL	BL
PBB	BL	---	BL	BL	BL	BL	BL	BL
PBDE	BL	---	BL	BL	BL	BL	BL	BL
DEHP	BL	---	BL	ND	ND	ND	ND	BL
BBP	BL	---	BL	ND	ND	ND	ND	BL
DBP	BL	---	BL	ND	ND	ND	ND	BL
DIBP	BL	---	BL	ND	ND	ND	ND	BL
Conclusion	PASS	PASS	PASS	PASS	PASS	PASS	PASS	PASS

Test Item(s)	A65	A66	A67	A68	A69
Pb	BL	BL	BL	BL	BL
Hg	BL	BL	BL	BL	BL
Cd	BL	BL	BL	BL	BL
Cr(VI) ▼	BL	BL	BL	BL	ND
PBB	ND	---	BL	---	---
PBDE	ND	---	BL	---	---
DEHP	ND	---	BL	---	---
BBP	ND	---	BL	---	---
DBP	ND	---	BL	---	---
DIBP	ND	---	BL	---	---
Conclusion	PASS	PASS	PASS	PASS	PASS



SGS-CSI Standards Technical Services Co., Ltd.
Guangzhou Branch Technical Laboratory

Unless otherwise agreed in writing, this document is issued by the Company subject to its General Conditions of Service printed overleaf, available on request or accessible at <https://www.sgs.com/en/Terms-and-Conditions>. Attention is drawn to the limitation of liability, indemnification and jurisdiction issues defined therein. Any holder of this document is advised that information contained hereon reflects the Company's findings at the time of its intervention only and within the limits of Client's instructions, if any. The Company's sole responsibility is to its Client and this document does not exonerate parties to a transaction from exercising all their rights and obligations under the transaction documents. This document cannot be reproduced except in full, without prior written approval of the Company. Any unauthorized alteration, forgery or falsification of the content or appearance of this document is unlawful and offenders may be prosecuted to the fullest extent of the law. Unless otherwise stated the results shown in this test report refer only to the sample(s) tested.
Attention: To check the authenticity of testing /inspection report & certificate, please contact us at telephone: (86-755) 8307 1443, or email: CN.Doccheck@sgs.com

No.198, Kezhu Road, Science City, Economic & Technological Development Area, Guangzhou, Guangdong, China 510663
中国·广东·广州高新技术产业开发区科学城科珠路198号 邮编: 510663

t (86-20) 82155555 www.sgsgroup.com.cn
t (86-20) 82155555 sgs.china@sgs.com

Notes:

(1) Interpretation of screening results by X-ray fluorescence spectrometry (XRF):

(a) Screening limits in mg/kg for regulated elements in various matrices according to IEC 62321-1:2013 Annex A as below table.

Element	Polymers	Metals	Composite Materials
Cd	$BL \leq (70-3\sigma) < X < (130+3\sigma) \leq OL$	$BL \leq (70-3\sigma) < X < (130+3\sigma) \leq OL$	$LOD < X < (150+3\sigma) \leq OL$
Pb	$BL \leq (700-3\sigma) < X < (1300+3\sigma) \leq OL$	$BL \leq (700-3\sigma) < X < (1300+3\sigma) \leq OL$	$BL \leq (500-3\sigma) < X < (1500+3\sigma) \leq OL$
Hg	$BL \leq (700-3\sigma) < X < (1300+3\sigma) \leq OL$	$BL \leq (700-3\sigma) < X < (1300+3\sigma) \leq OL$	$BL \leq (500-3\sigma) < X < (1500+3\sigma) \leq OL$
Br	$BL \leq (300-3\sigma) < X$	Not applicable	$BL \leq (250-3\sigma) < X$
Cr	$BL \leq (700-3\sigma) < X$	$BL \leq (700-3\sigma) < X$	$BL \leq (500-3\sigma) < X$

(b) If the maximum allowed level restricts PBB/PBDE and Cr(VI) rather than Br and Cr, the exceptions are the XRF determinations of Br and Cr. If the quantitative results for the elements Br and/or Cr are higher than the limit (for Br calculated based on the stoichiometry of Br in the most common congeners of PBB/PBDE), the sample is "inconclusive".

(c) Results are obtained by EDXRF for primary screening, LOD = Limit of Detection, BL = Below Limit, OL = Over Limit, IN (The symbol X marks the region) = Inconclusive, where further investigation is necessary, and further chemical testing by ICP-OES (for Cd, Pb, Hg), UV-Vis (for Cr(VI)) and GC-MS (for PBB/PBDE) are recommended to be performed.

(d) The EDXRF screening test for elements – The reading may be different to the actual content in the sample be of non-uniformity composition.

(2) Screening results of Phthalates (PHTH) below the limits are shown as "BL". Further chemical testing by GC-MS is to be performed if the results exceed limits.

Test Items	CAS No.
Bis(2-ethylhexyl) phthalate (DEHP)	117-81-7
Butyl benzyl phthalate (BBP)	85-68-7
Dibutyl phthalate (DBP)	84-74-2
Diisobutyl phthalate (DIBP)	84-69-5

(3) Interpretation of results by chemical tests:

(a) mg/kg = 0.0001%, MDL = Method detection Limit, ND = Not Detected (<MDL), --- = Not Applicable.

(b) Unit and MDL in wet chemical test

Test Items	Pb	Hg	Cd	DEHP	BBP	DBP	DIBP
Unit	mg/kg	mg/kg	mg/kg	mg/kg	mg/kg	mg/kg	mg/kg
MDL	10	10	10	100	100	100	100

The MDL for single compound of PBB and PBDE is 100 mg/kg,

MDL of Cr(VI) for polymer, composite and leather sample is 10 mg/kg.

MDL of Cr(VI) for metal sample is 0.10 µg/cm².

(c) ▼ = Metal sample

a. The sample is positive for Cr(VI) if the Cr(VI) concentration is greater than 0.13 µg/cm². The sample coating is considered to contain Cr(VI).

b. The sample is negative for Cr(VI) if Cr(VI) is ND (concentration less than 0.10 µg/cm²). The coating is considered a non-Cr(VI) based coating

c. The result between 0.10 µg/cm² and 0.13 µg/cm² is considered to be inconclusive-unavoidable coating variations may influence the determination

Information on storage conditions and production date of the tested sample is unavailable and thus



Unless otherwise agreed in writing, this document is issued by the Company subject to its General Conditions of Service printed overleaf, available on request or accessible at <https://www.sgs.com/en/Terms-and-Conditions>. Attention is drawn to the limitation of liability, indemnification and jurisdiction issues defined therein. Any holder of this document is advised that information contained hereon reflects the Company's findings at the time of its intervention only and within the limits of Client's instructions, if any. The Company's sole responsibility is to its Client and this document does not exonerate parties to a transaction from exercising all their rights and obligations under the transaction documents. This document cannot be reproduced except in full, without prior written approval of the Company. Any unauthorized alteration, forgery or falsification of the content or appearance of this document is unlawful and offenders may be prosecuted to the fullest extent of the law. Unless otherwise stated the results shown in this test report refer only to the sample(s) tested.
Attention: To check the authenticity of testing / inspection report & certificate, please contact us at telephone: (86-755) 8307 1443, or email: CN.Doccheck@sgs.com

Cr(VI) results represent status of the sample at the time of testing.

- (4) Restricted substances and maximum concentration values tolerated by weight in homogeneous materials under RoHS Directive: Cd: 0.01%, Pb/Hg/Cr(VI)/PBB/PBDE/DEHP/BBP/DBP/DIBP: 0.1%. The limit is quoted from RoHS Directive (EU) 2015/863.
- (5) IEC 62321 series is equivalent to EN 62321 series.

(6) Only selected parts in sample photos were tested and drew the conclusion.

(7) ▲=According to the declaration from the client, Lead (Pb) in No.A53 is exempted by EU RoHS directive 2011/65/EU based on [ANNEX III 6(c)]: Copper alloy containing up to 4 % lead by weight.

More information about exemption can be found via the following link:

<https://rohs.sgsonline.com.cn/PDFLinks/en/RSTS-TP-037%20RoHS%20Exemption%20%28EN%29.pdf>

(8) Results & Photos of this report refer to verification report CANEC24019415801.

The location of performance of the laboratory activities: A. No.198, Kezhu Road, Science City, Economic & Technological Development Area, Guangzhou, Guangdong; B. Room 101, Building 3, No.1501, Kaichuang Avenue, Huangpu District, Guangzhou, Guangdong

Unless otherwise stated, the decision rule for conformity reporting is based on Binary Statement for Simple Acceptance Rule ($w=0$) stated in ILAC-G8:09/2019.



SGS-CSTC Standards Technical Services Co., Ltd.
Guangzhou Branch / 广州分公司

Unless otherwise agreed in writing, this document is issued by the Company subject to its General Conditions of Service printed overleaf, available on request or accessible at <https://www.sgs.com/en/Terms-and-Conditions>. Attention is drawn to the limitation of liability, indemnification and jurisdiction issues defined therein. Any holder of this document is advised that information contained hereon reflects the Company's findings at the time of its intervention only and within the limits of Client's instructions, if any. The Company's sole responsibility is to its Client and this document does not exonerate parties to a transaction from exercising all their rights and obligations under the transaction documents. This document cannot be reproduced except in full, without prior written approval of the Company. Any unauthorized alteration, forgery or falsification of the content or appearance of this document is unlawful and offenders may be prosecuted to the fullest extent of the law. Unless otherwise stated the results shown in this test report refer only to the sample(s) tested.

Attention: To check the authenticity of testing / inspection report & certificate, please contact us at telephone: (86-755) 8307 1443, or email: CN.Doccheck@sgs.com

No.198, Kezhu Road, Science City, Economic & Technological Development Area, Guangzhou, Guangdong, China 510663
中国·广东·广州高新技术产业开发区科学城科珠路198号 邮编: 510663

t (86-20) 82155555 www.sgsgroup.com.cn
t (86-20) 82155555 sgs.china@sgs.com

Sample photos:



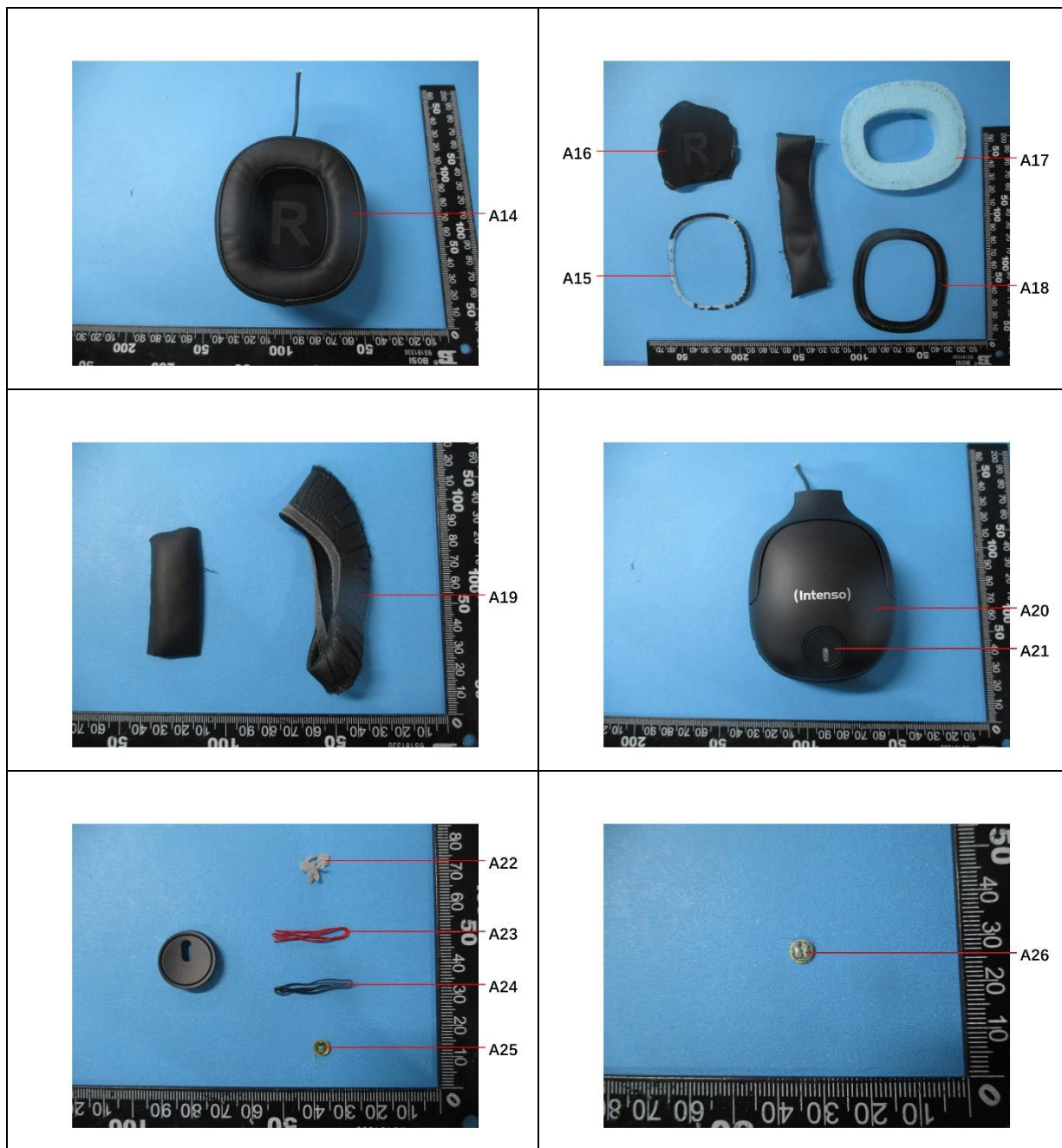
SGS-CST Standards Technical Services Co., Ltd.
Guangzhou Branch Technical Laboratory

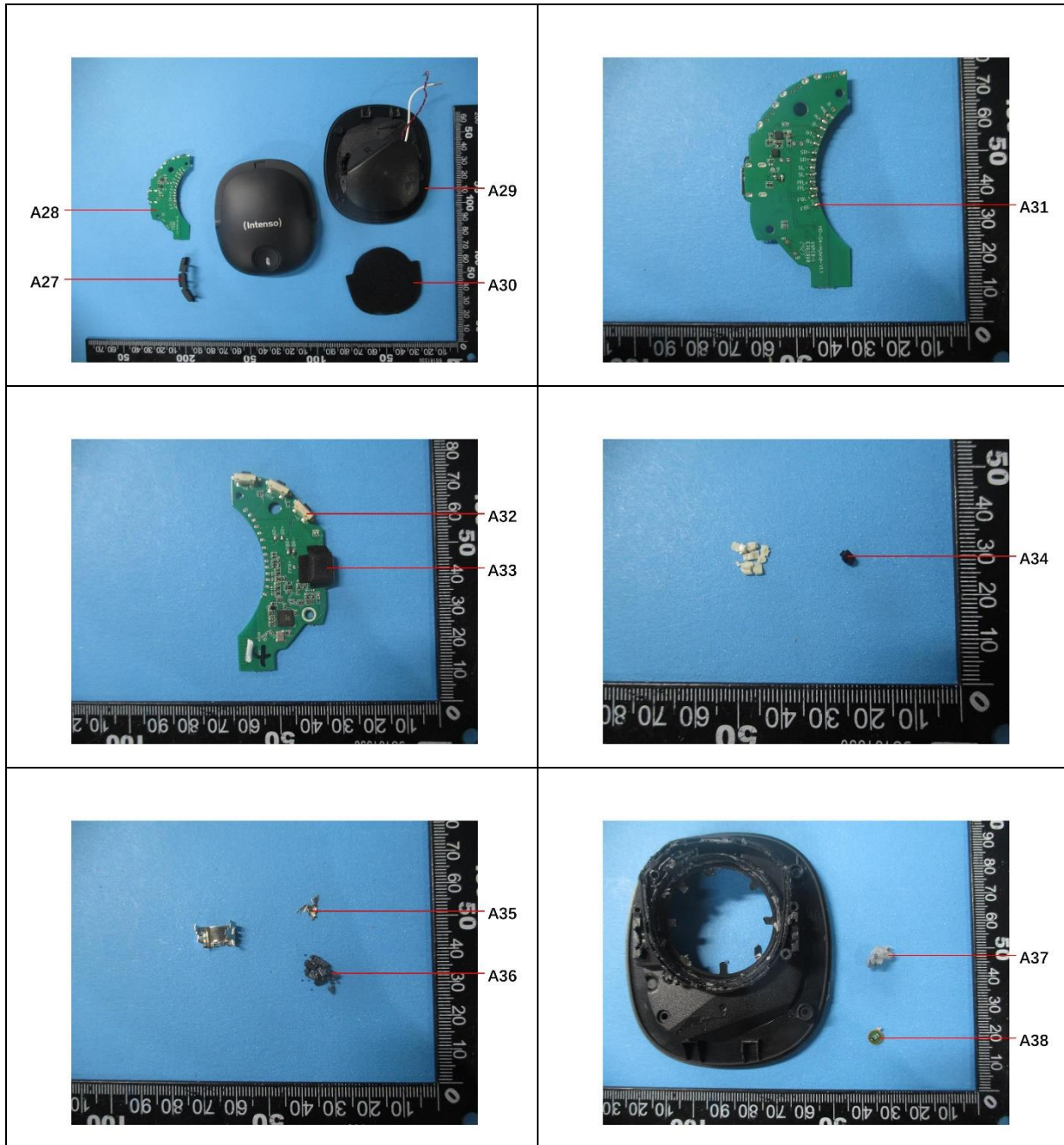
Unless otherwise agreed in writing, this document is issued by the Company subject to its General Conditions of Service printed overleaf, available on request or accessible at <https://www.sgs.com/en/Terms-and-Conditions>. Attention is drawn to the limitation of liability, indemnification and jurisdiction issues defined therein. Any holder of this document is advised that information contained herein reflects the Company's findings at the time of its intervention only and within the limits of Client's instructions, if any. The Company's sole responsibility is to its Client and this document does not exonerate parties to a transaction from exercising all their rights and obligations under the transaction documents. This document cannot be reproduced except in full, without prior written approval of the Company. Any unauthorized alteration, forgery or falsification of the content or appearance of this document is unlawful and offenders may be prosecuted to the fullest extent of the law. Unless otherwise stated the results shown in this test report refer only to the sample(s) tested.

Attention: To check the authenticity of testing / inspection report & certificate, please contact us at telephone: (86-755) 8307 1443, or email: CN.Doccheck@sgs.com

No.198, Kezhu Road, Science City, Economic & Technological Development Area, Guangzhou, Guangdong, China 510663
中国·广东·广州高新技术产业开发区科学城科珠路198号 邮编: 510663

t (86-20) 82155555 www.sgsgroup.com.cn
t (86-20) 82155555 sgs.china@sgs.com





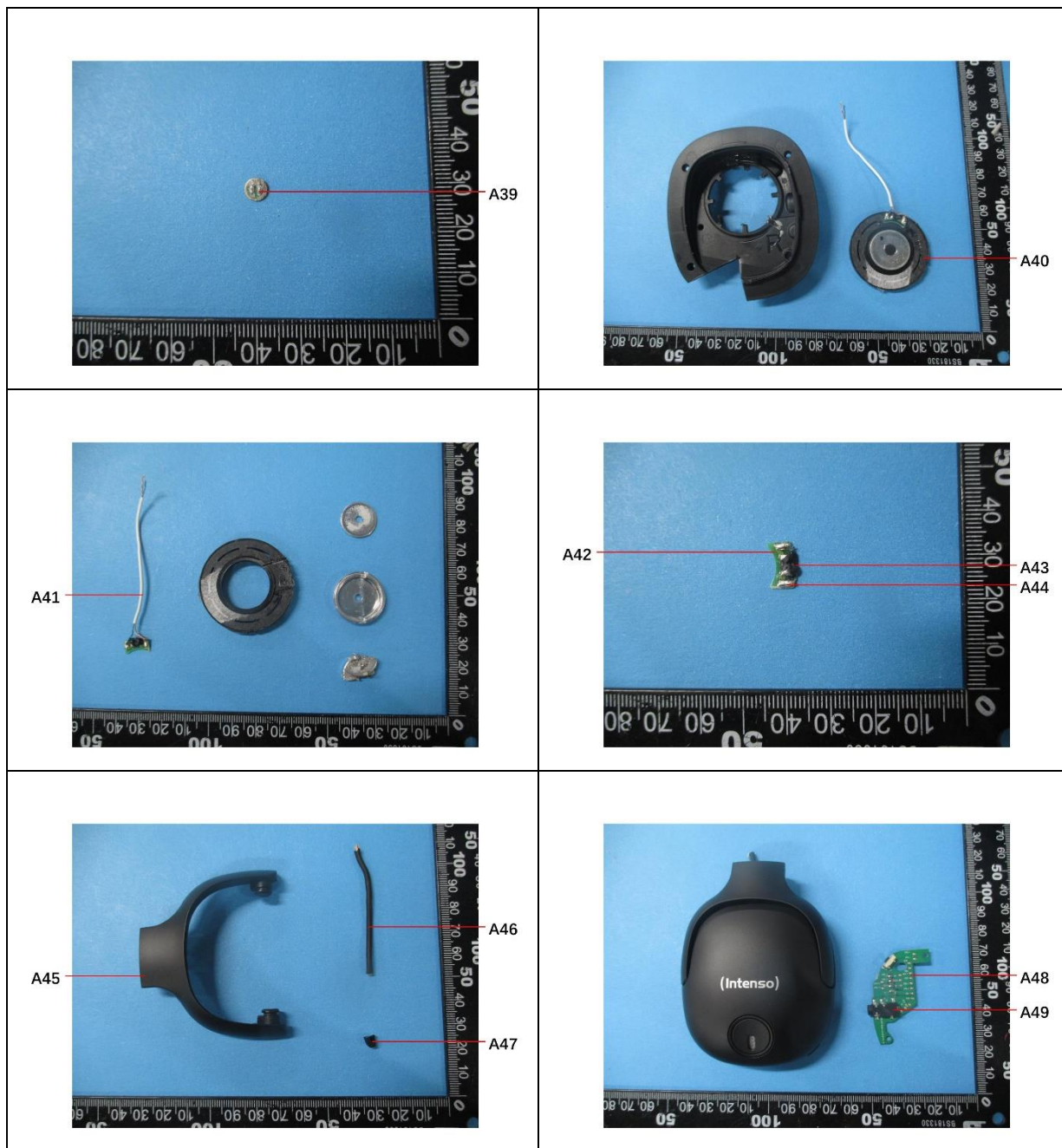
SGS-CSTC Standards Technical Services Co., Ltd.
Guangzhou Branch Technical Laboratory

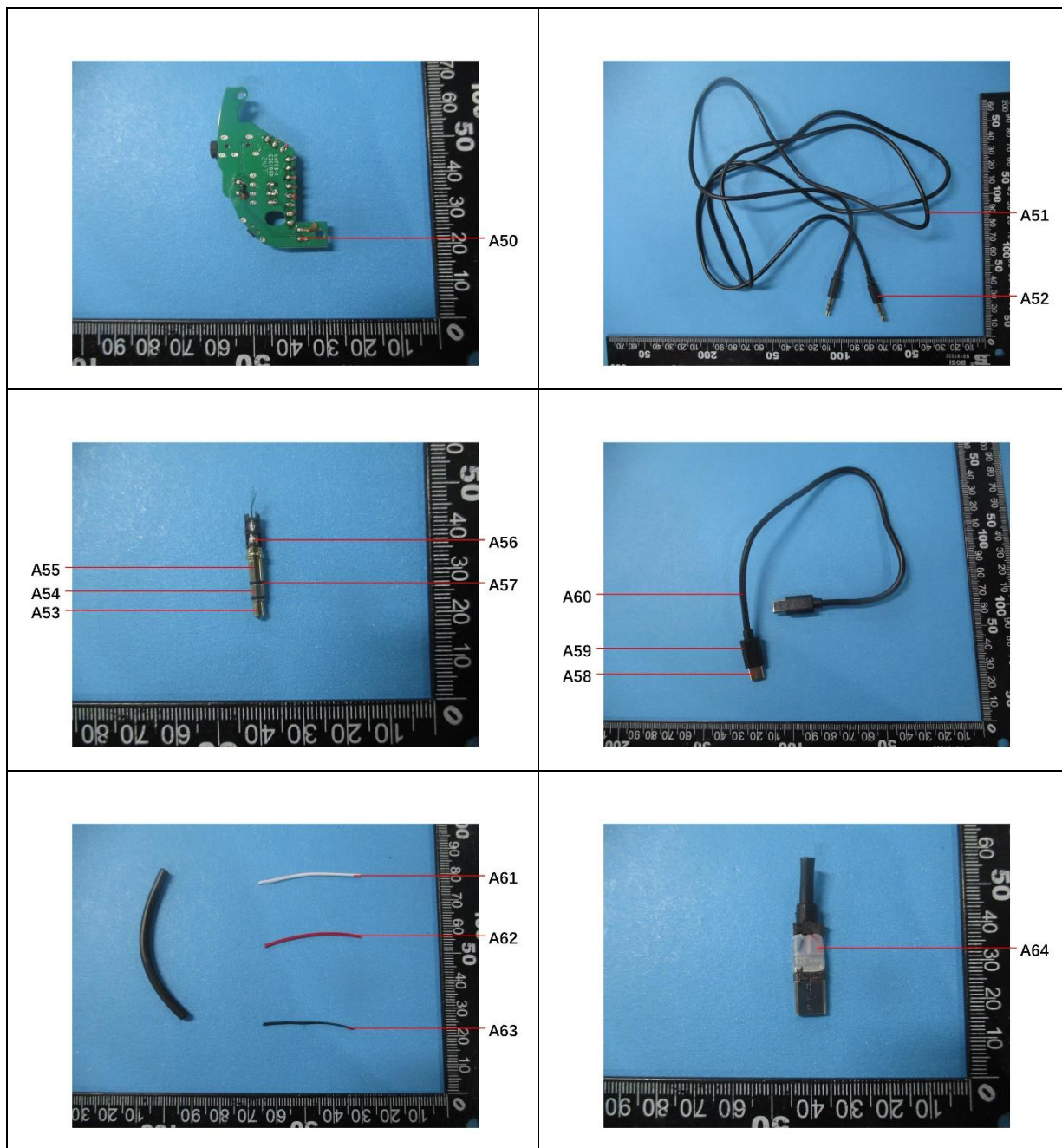
Unless otherwise agreed in writing, this document is issued by the Company subject to its General Conditions of Service printed overleaf, available on request or accessible at <https://www.sgs.com/en/Terms-and-Conditions>. Attention is drawn to the limitation of liability, indemnification and jurisdiction issues defined therein. Any holder of this document is advised that information contained hereon reflects the Company's findings at the time of its intervention only and within the limits of Client's instructions, if any. The Company's sole responsibility is to its Client and this document does not exonerate parties to a transaction from exercising all their rights and obligations under the transaction documents. This document cannot be reproduced except in full, without prior written approval of the Company. Any unauthorized alteration, forgery or falsification of the content or appearance of this document is unlawful and offenders may be prosecuted to the fullest extent of the law. Unless otherwise stated the results shown in this test report refer only to the sample(s) tested.

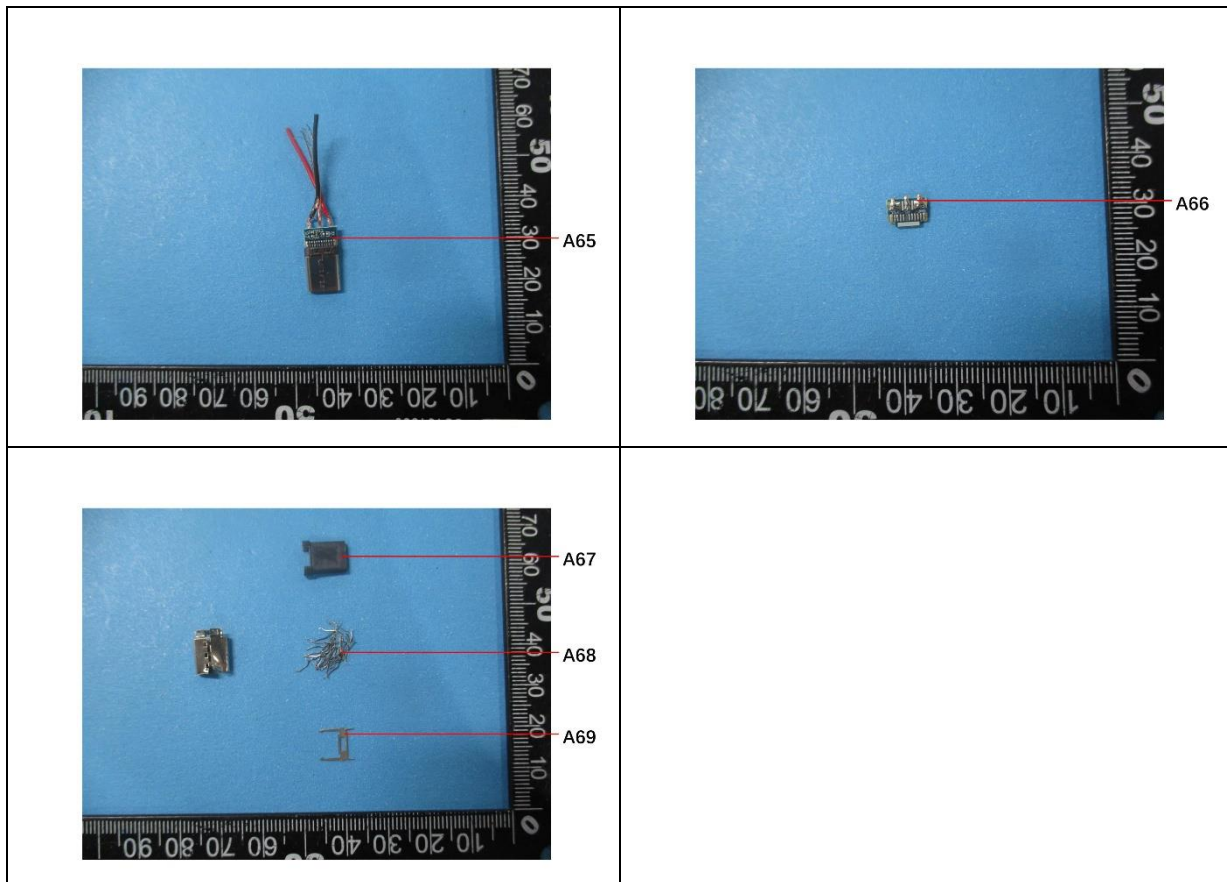
Attention: To check the authenticity of testing / inspection report & certificate, please contact us at telephone: (86-755) 8307 1443, or email: CN.Doccheck@sgs.com

No.198, Kezhu Road, Science City, Economic & Technological Development Area, Guangzhou, Guangdong, China 510663
中国·广东·广州高新技术产业开发区科学城科珠路198号 邮编: 510663

t (86-20) 82155555 www.sgsgroup.com.cn
t (86-20) 82155555 sgs.china@sgs.com







SGS authenticate the photo on original report only
*** End of Report ***



SGS-CSTC Standards Technical Services Co., Ltd.
Guangzhou Branch Technical Laboratory

Unless otherwise agreed in writing, this document is issued by the Company subject to its General Conditions of Service printed overleaf, available on request or accessible at <https://www.sgs.com/en/Terms-and-Conditions>. Attention is drawn to the limitation of liability, indemnification and jurisdiction issues defined therein. Any holder of this document is advised that information contained hereon reflects the Company's findings at the time of its intervention only and within the limits of Client's instructions, if any. The Company's sole responsibility is to its Client and this document does not exonerate parties to a transaction from exercising all their rights and obligations under the transaction documents. This document cannot be reproduced except in full, without prior written approval of the Company. Any unauthorized alteration, forgery or falsification of the content or appearance of this document is unlawful and offenders may be prosecuted to the fullest extent of the law. Unless otherwise stated the results shown in this test report refer only to the sample(s) tested.

Attention: To check the authenticity of testing / inspection report & certificate, please contact us at telephone: (86-755) 8307 1443, or email: CN.Doccheck@sgs.com

No.198, Kezhu Road, Science City, Economic & Technological Development Area, Guangzhou, Guangdong, China 510663
中国·广东·广州高新技术产业开发区科学城科珠路198号 邮编: 510663

t (86-20) 82155555 www.sgsgroup.com.cn
t (86-20) 82155555 sgs.china@sgs.com

Member of the SGS Group (SGS SA)