



中国认可
国际互认
检测
TESTING
CNAS L12557

Test Report

UTLR23105501-2

Date: Nov.14, 2023

Password:PW1582

Page: 1 of 10

Applicant: LIBO INTERNATIONAL CO., LTD

Address: Middle Yuting Road, Chenghai District, Shantou city, Guangdong Province, China.

The following samples were submitted and identified on behalf of the clients as

Sample Name: Hover Soccer Ball Series
 Model No: 811, 811A, 811B, 812, 813, 815, 816, 817, 818, 818A, 818B, 819, 819A, 820, 821, 822, 823, 823A, 823B, 825, 826, 827, 828, 829, 830, 831, 832, 833, 835, 836, 837, 838, 839, 850, 851, 852, 853, 855, 856, 857, 858, 859, 860, 861, 862, 863, 865, 866, 867, 868, 868A, 869, 870, 871, 872, 873, 875, 876, 877, 878, 879, 880, 881, 882, 883, 885, 886, 887, 888, 889, 890, 890A, 890C
 Sample Received Date: Oct.30, 2023,Nov.13,2023
 Test Period: Oct.30, 2023 to Nov.03, 2023,Nov.13,2023 to Nov.14,2023
 Test Method: Please refer to next page(s).
 Test Result: Please refer to next page(s).

CONCLUSION :

According to client's request to conduct below tests in the selected parts of the submitted sample:

<u>TEST ITEM</u>	<u>RESULT</u>
1.RoHS Directive 2011/65/EU Annex II amending Annex(EU)2015/863 and amending Annex (EU)2017/2102	
-Lead, Cadmium, Mercury, Hexavalent Chromium, PBBs and PBDEs Content	PASS
-Di-(2-ethylhexyl) phthalate(DEHP), Benzylbutyl phthalate(BBP), Dibutyl phthalate(DBP), Diisobutyl phthalate(DIBP) Content	PASS



Authorized Signatory
Title: Lab Manager

For and on behalf of
Dongguan Universal Testing Technology Co., Ltd.

Except for full text reproduction, part of the report should not be copied without the written approval of this laboratory. Our report includes all of the tests requested by client and the results thereof based upon the information that you provided to us. The results in this report are not indicative of the quality or characteristics of the lot from which a test sample was taken unless specifically and expressly noted.

Dongguan Universal Testing Technology Co., Ltd

3rd Floor, HuiHai Building, No.631 Yinlang South Road, Dalang Town, Dongguan City, Guangdong province, China.

Website :http://www.utl-lab.cn

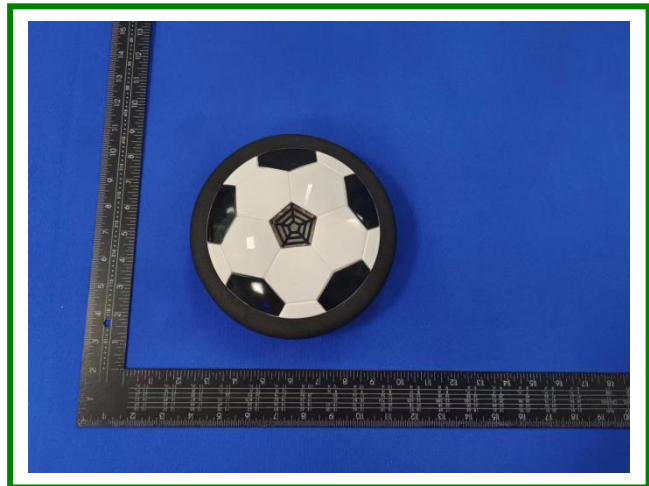
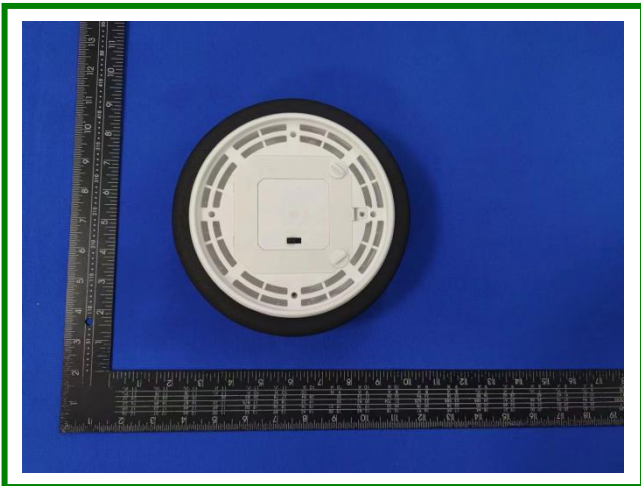
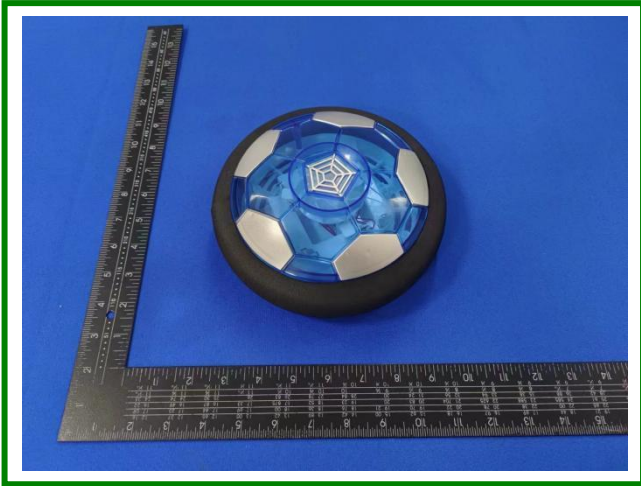
E-mail : Kingchan168@126.com

Hotline : +86 13602386325

Tel : +86 400-068-3789



Photos of submitted sample





Test Report

UTLR23105501-2

Date: Nov.14, 2023

Password:PW1582

Page: 3 of 10

Test Result(s):

Part No.	Part Description
P1	Black foam
P2	Shell: black plastic
P3	Shell: white plastic
P4	Button: white plastic
P5	Silver screw
P6	Battery cover: off white plastic
P7	Bottom shell: white plastic
P8	Battery compartment: silver spring
P9	Turning head: white plastic
P10	Switch: Black metal
P11	Switch: Silver metal pin
P12	Switch: brown plastic
P13	Switch: Silver metal
P14	Switch: black plastic
P15	Switch: Silver Spring
P16	Wire: Gold core
P17	White wire cover
P18	Red wire skin
P19	Dark red resistor
P20	Green PCB board
P21	White electronic components
P22	Soldering tin
P23	Motor: white plastic
P24	Motor: Gold metal pin
P25	Motor: Gold metal ring
P26	Motor: black magnet
P27	Motor: Silver metal
P28	Motor rotation: silver metal column
P29	Motor rotation: silver metal plate
P30	Motor rotation: copper wire
P31	Motor: Silver metal bracket
P32	Shell: white plastic
P33	Shell: blue plastic
P34	Motor rotation: Gold metal

Except for full text reproduction, part of the report should not be copied without the written approval of this laboratory. Our report includes all of the tests requested by client and the results thereof based upon the information that you provided to us. The results in this report are not indicative of the quality or characteristics of the lot from which a test sample was taken unless specifically and expressly noted.

Dongguan Universal Testing Technology Co., Ltd

3rd Floor, HuiHai Building, No.631 Yinlang South Road, Dalang Town, Dongguan City, Guangdong province, China.

Website : <http://www.utl-lab.cn>

E-mail : Kingchan168@126.com

Hotline : +86 13602386325

Tel : +86 400-068-3789

**1.RoHS Directive 2011/65/EU and its amending Directive (EU)2015/863 & Directive (EU)2017/2102**

ROHS Restricted Substances	Limit(w/w)
Lead(Pb)	0.1%
Cadmium(Cd)	0.01%
Mercury(Hg)	0.1%
Hexavalent Chromium(Cr VI)	0.1%
Polybromobiphenyls (PBBs)	0.1%
Polybromodiphenyl ethers (PBDEs)	0.1%
Di-(2-ethylhexyl) phthalate(DEHP)	0.1%
Benzylbutyl phthalate(BBP)	0.1%
Dibutyl phthalate(DBP)	0.1%
Diisobutyl phthalate(DIBP)	0.1%

1.Lead, Cadmium, Mercury, Hexavalent Chromium, PBBs and PBDEs Content –RoHS Directive 2011/65/EU and its amending Directive (EU)2015/863 & Directive (EU)2017/2102

Method(s) Used: Please refer to Annex B

PRELIMINARY SCREENING ASSESSMENT

Part No.	Result(s)(mg/kg)				
	Lead	Cadmium	Mercury	Chromium	Bromine
P1	BL	BL	BL	BL	BL
P2	BL	BL	BL	BL	BL
P3	BL	BL	BL	BL	BL
P4	BL	BL	BL	BL	BL
P5	BL	BL	BL	BL	NA
P6	BL	BL	BL	BL	BL
P7	BL	BL	BL	BL	BL
P8	BL	BL	BL	BL	BL
P9	BL	BL	BL	BL	BL
P10	BL	BL	BL	BL	NA
P11	BL	BL	BL	BL	BL
P12	BL	BL	BL	BL	BL
P13	BL	BL	BL	BL	NA
P14	BL	BL	BL	BL	BL
P15	BL	BL	BL	X	NA
P16	BL	BL	BL	BL	NA
P17	BL	BL	BL	BL	BL
P18	BL	BL	BL	BL	BL
P19	BL	BL	BL	BL	BL

Except for full text reproduction, part of the report should not be copied without the written approval of this laboratory. Our report includes all of the tests requested by client and the results thereof based upon the information that you provided to us. The results in this report are not indicative of the quality or characteristics of the lot from which a test sample was taken unless specifically and expressly noted.

Dongguan Universal Testing Technology Co., Ltd

3rd Floor, HuiHai Building, No.631 Yinlang South Road, Dalang Town, Dongguan City, Guangdong province, China.

Website : <http://www.utl-lab.cn>E-mail : Kingchan168@126.com

Hotline : +86 13602386325

Tel : +86 400-068-3789



P20	BL	BL	BL	BL	BL
P21	BL	BL	BL	BL	BL
P22	BL^	BL	BL	BL	NA
P23	BL	BL	BL	BL	BL
P24	BL	BL	BL	BL	NA
P25	BL	BL	BL	BL	NA
P26	BL	BL	BL	BL	NA
P27	BL	BL	BL	BL	NA
P28	BL	BL	BL	BL	NA
P29	BL	BL	BL	X	NA
P30	BL	BL	BL	BL	NA
P31	BL	BL	BL	X	NA
P32	BL	BL	BL	BL	BL
P33	BL	BL	BL	BL	BL
P34	BL	BL	BL	BL	NA

Note(s):

- 1.mg/kg = milligram(s) per kilogram = ppm = part(s) per million
- 2.BL=Below limit; OL=Over limit; NA=Not applicable; X=further chemical testing needed
- 3.APPENDIX A for interpretation of EDXRF results(StandardIEC62321-3-1)
- 4.^ the first resubmission sample were received on Nov.13, 2023.

APPENDIX A

Element	Polymer Materials	Metallic Materials	Composite Materials
Cd	$BL \leq (70-3\sigma) < X < (130+3\sigma) \leq OL$	$BL \leq (70-3\sigma) < X < (130+3\sigma) \leq OL$	$LOD < X < (150+3\sigma) \leq OL$
Pb	$BL \leq (700-3\sigma) < X < (1300+3\sigma) \leq OL$	$BL \leq (700-3\sigma) < X < (1300+3\sigma) \leq OL$	$BL \leq (500-3\sigma) < X < (1500+3\sigma) \leq OL$
Hg	$BL \leq (700-3\sigma) < X < (1300+3\sigma) \leq OL$	$BL \leq (700-3\sigma) < X < (1300+3\sigma) \leq OL$	$BL \leq (500-3\sigma) < X < (1500+3\sigma) \leq OL$
Br	$BL \leq (300-3\sigma) < X$	NA	$BL \leq (250-3\sigma) < X$
Cr	$BL \leq (700-3\sigma) < X$	$BL \leq (700-3\sigma) < X$	$BL \leq (500-3\sigma) < X$

Note(s): Results was obtained by EDXRF for primary screening. According the APPENDIX A below, further chemical testing by ICP (for Cd, Pb, Hg), UV-VIS (for CrVI) and GCMSD (for PBBs, PBDEs) have to be performed, if the XRF results is in the range defined as inconclusive (X). Further chemical testing is also proposed when results are over limit (OL) in order to have a numeral result to compare to the limits set by the Directive 2011/65/EU.



Test Report

UTLR23105501-2

Date: Nov.14, 2023

Password:PW1582

Page: 6 of 10

CHEMICAL TEST

Part No.	Test item	Result	Limit	Conclusion
P15	Chromium VI(Cr VI)	Negative	Negative	Pass
P29	Chromium VI(Cr VI)	Negative	Negative	Pass
P31	Chromium VI(Cr VI)	Negative	Negative	Pass

Note:

1. Result(s) of Cr VI for metallic material(s) was (were) expressed in term of positive and negative. Negative means the absence of Cr VI on the tested areas and the result(s) was (were) regarded as in compliance with European Council Directive 2011/65/EU, Article 4(1). While, positive means the presence of Cr VI on tested areas and the result(s) was (were) regarded as in conflict with European Council Directive 201/65/EU, Article 4(1).

Except for full text reproduction, part of the report should not be copied without the written approval of this laboratory. Our report includes all of the tests requested by client and the results thereof based upon the information that you provided to us. The results in this report are not indicative of the quality or characteristics of the lot from which a test sample was taken unless specifically and expressly noted.

Dongguan Universal Testing Technology Co., Ltd

3rd Floor, HuiHai Building, No.631 Yinlang South Road, Dalang Town, Dongguan City, Guangdong province, China.

Website :<http://www.utl-lab.cn>

E-mail : Kingchan168@126.com

Hotline : +86 13602386325

Tel : +86 400-068-3789



APPENDIX B

List of Analytes and their Corresponding Test Methods [European Council Directive 2011/65/EU] :		
No.	Name of Analytes	Test Method(s)
1	Lead(Pb), mercury(Hg), cadmium(Cd), total chromium(Cr) and total bromine(Br) using X-ray fluorescence spectrometry	With reference to IEC 62321-3-1:2013
2	Lead (Pb)	With reference to IEC 62321-5:2013
3	Cadmium (Cd)	
4	Mercury (Hg)	With reference to IEC 62321-4:2013/AMD1:2017
5	Chromium VI (Cr VI)	Metal :With reference to IEC 62321-7-1:2015 Polymers & Electronics :With reference to IEC 62321-7-2:2017
6	Polybromobiphenyls (PBBs) - Bromobiphenyl (MonoBB) - Dibromobiphenyl (DiBB) - Tribromobiphenyl (TriBB) - Tetrabromobiphenyl (TetraBB) - Pentabromobiphenyl (PentaBB) - Hexabromobiphenyl (HexaBB) - Heptabromobiphenyl (HeptaBB) - Octabromobiphenyl (OctaBB) - Nonabromobiphenyl (NonaBB) - Decabromobiphenyl (DecaBB)	With reference to IEC 62321-6:2015
7	Polybromodiphenyl ethers (PBDEs) - Bromodiphenyl ether (MonoBDE) - Dibromodiphenyl ether (DiBDE) - Tribromodiphenyl ether (TriBDE) - Tetrabromodiphenyl ether (TetraBDE) - Pentabromodiphenyl ether (PentaBDE) - Hexabromodiphenyl ether (HexaBDE) - Heptabromodiphenyl ether (HeptaBDE) - Octabromodiphenyl ether (OctaBDE) - Nonabromodiphenyl ether (NonaBDE) - Decabromodiphenyl ether (DecaBDE)	
[a]	The principle of this method was evaluated and supported by two studies organized by IEC TC 111 WG3. These studies were focused on detecting the presence of Cr VI in the corrosion protection coatings on metallic samples.	



1.2.Di-(2-ethylhexyl) phthalate(DEHP), Benzylbutyl phthalate(BBP), Dibutyl phthalate(DBP), Diisobutyl phthalate(DIBP) Content- RoHS Directive 2011/65/EU Annex II amending Annex(EU)2015/863 and amending Annex (EU)2017/2102

Test Method: With reference to IEC 62321-8:2017, analysis was performed by GC-MS.

Test Items	Unit	Result	MDL	Limit
		<u>P17+P18</u>		
Di-(2-ethylhexyl) phthalate(DEHP)	mg/kg	N.D.	50	1000
Benzylbutyl phthalate(BBP)	mg/kg	N.D.	50	1000
Dibutyl phthalate(DBP)	mg/kg	N.D.	50	1000
Diisobutyl phthalate(DIBP)	mg/kg	N.D.	50	1000
Conclusion		Pass	-	-

Test Items	Unit	Result	MDL	Limit
		<u>P1</u>		
Di-(2-ethylhexyl) phthalate(DEHP)	mg/kg	N.D.	50	1000
Benzylbutyl phthalate(BBP)	mg/kg	N.D.	50	1000
Dibutyl phthalate(DBP)	mg/kg	N.D.	50	1000
Diisobutyl phthalate(DIBP)	mg/kg	N.D.	50	1000
Conclusion		Pass	-	-

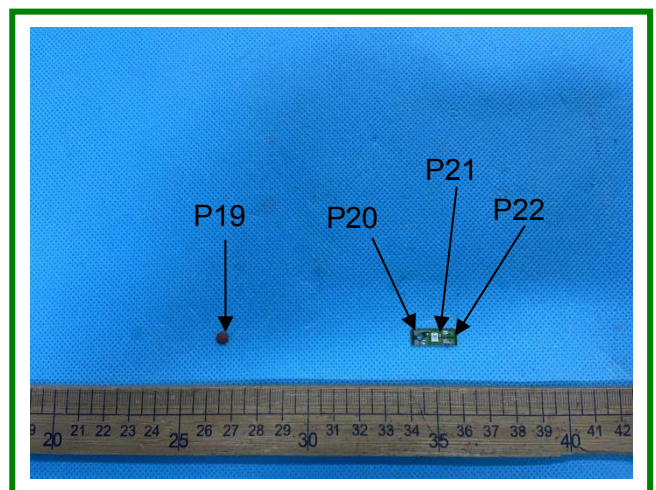
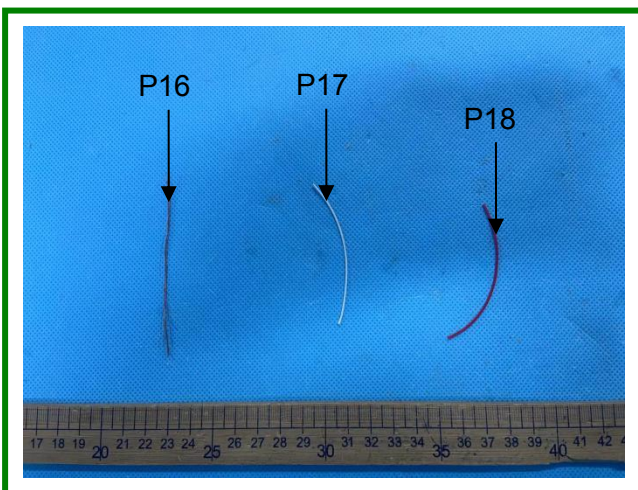
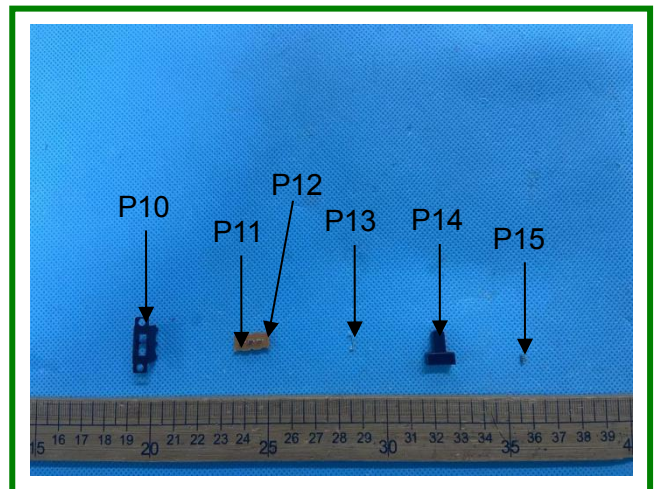
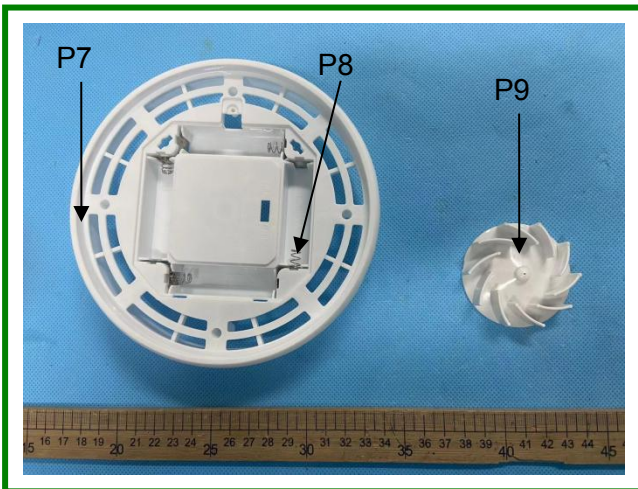
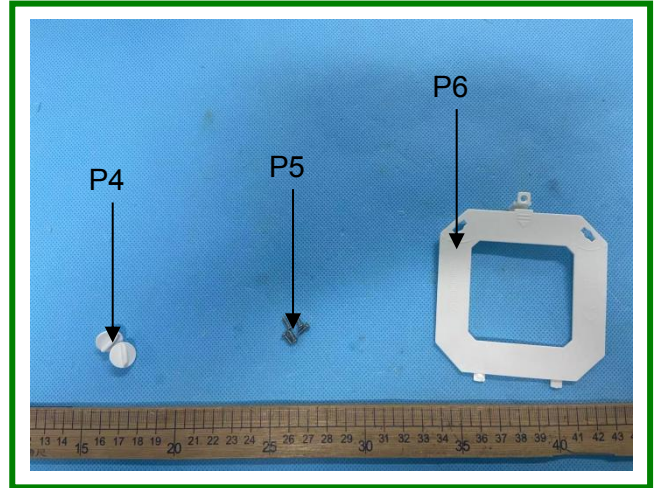
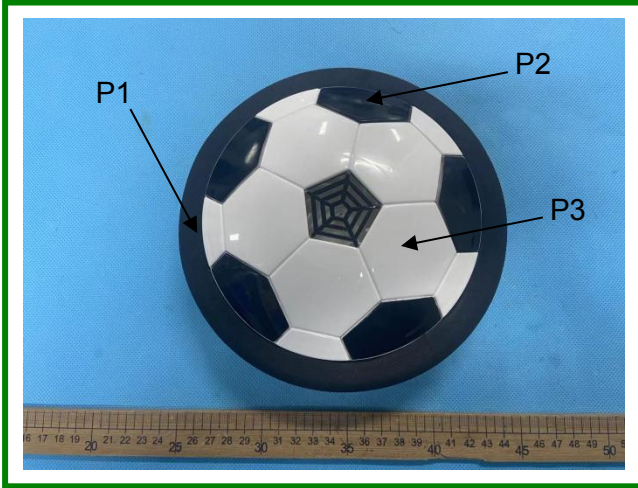
Test Items	Unit	Result	MDL	Limit
		<u>P23+P4+P33+P2+P21+P32+P14+P9 +P3+P6+P7+P12+P20</u>		
Di-(2-ethylhexyl) phthalate(DEHP)	mg/kg	N.D.	50	1000
Benzylbutyl phthalate(BBP)	mg/kg	N.D.	50	1000
Dibutyl phthalate(DBP)	mg/kg	N.D.	50	1000
Diisobutyl phthalate(DIBP)	mg/kg	N.D.	50	1000
Conclusion		Pass	-	-

Note:

1. mg/kg = milligram per kilogram= ppm.
2. MDL = Method Detection Limit.
3. N.D. = Not Detected (< MDL)
4. "+"=mixed test, data users should consider the risk of "pass" results of mixed sample



Parts photos:



Except for full text reproduction, part of the report should not be copied without the written approval of this laboratory. Our report includes all of the tests requested by client and the results thereof based upon the information that you provided to us. The results in this report are not indicative of the quality or characteristics of the lot from which a test sample was taken unless specifically and expressly noted.

Dongguan Universal Testing Technology Co., Ltd

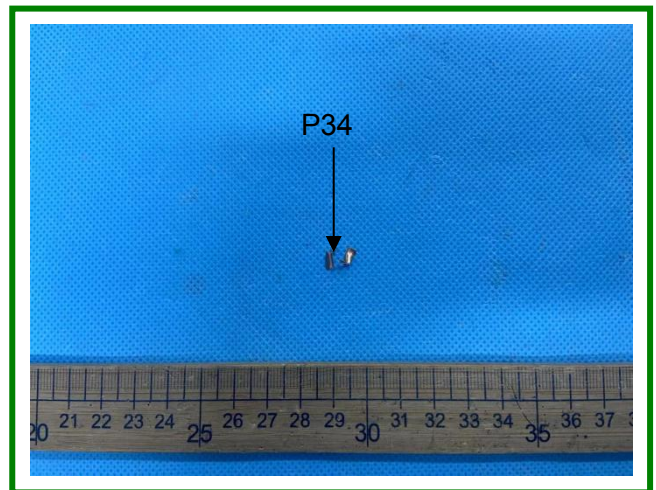
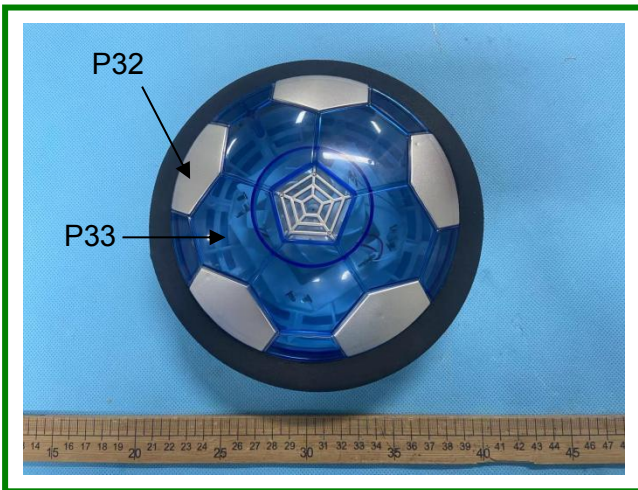
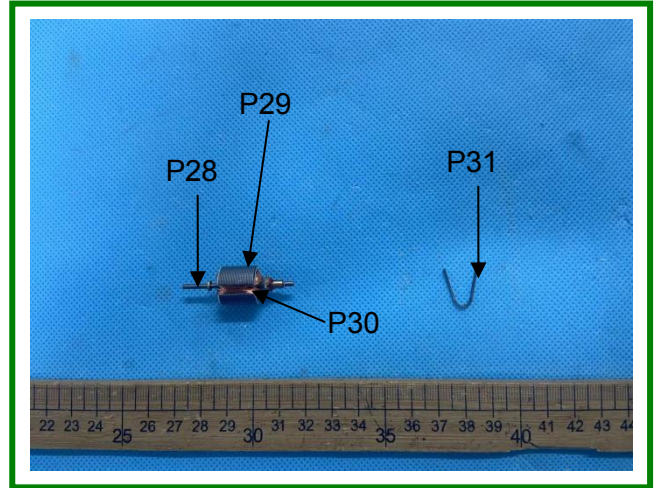
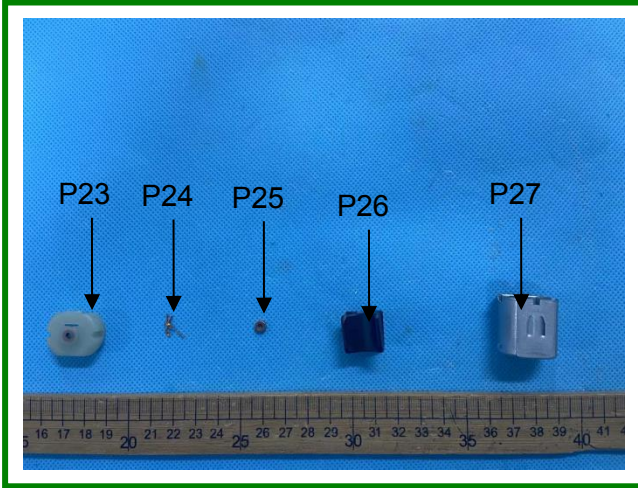
3rd Floor, HuiHai Building, No.631 Yinlang South Road, Dalang Town, Dongguan City, Guangdong province, China.

Website : <http://www.utl-lab.cn>

E-mail : Kingchan168@126.com

Hotline : +86 13602386325

Tel : +86 400-068-3789



***** End of Test Report *****