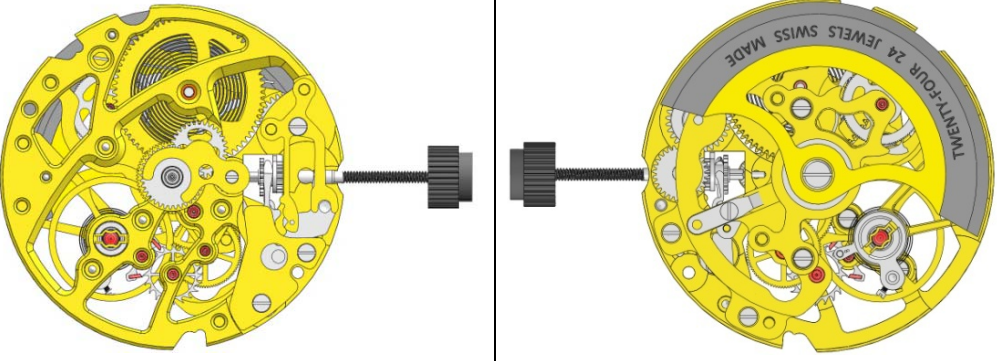


# Specification Information

Caliber:	
<b>S10</b>	
Height:	
<b>5.05mm</b>	
Case fitting Diameter:	
<b>25.60mm - 1 1/2'''</b>	

## Technical specification

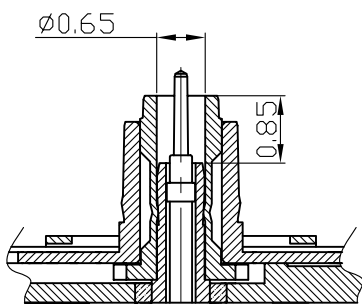
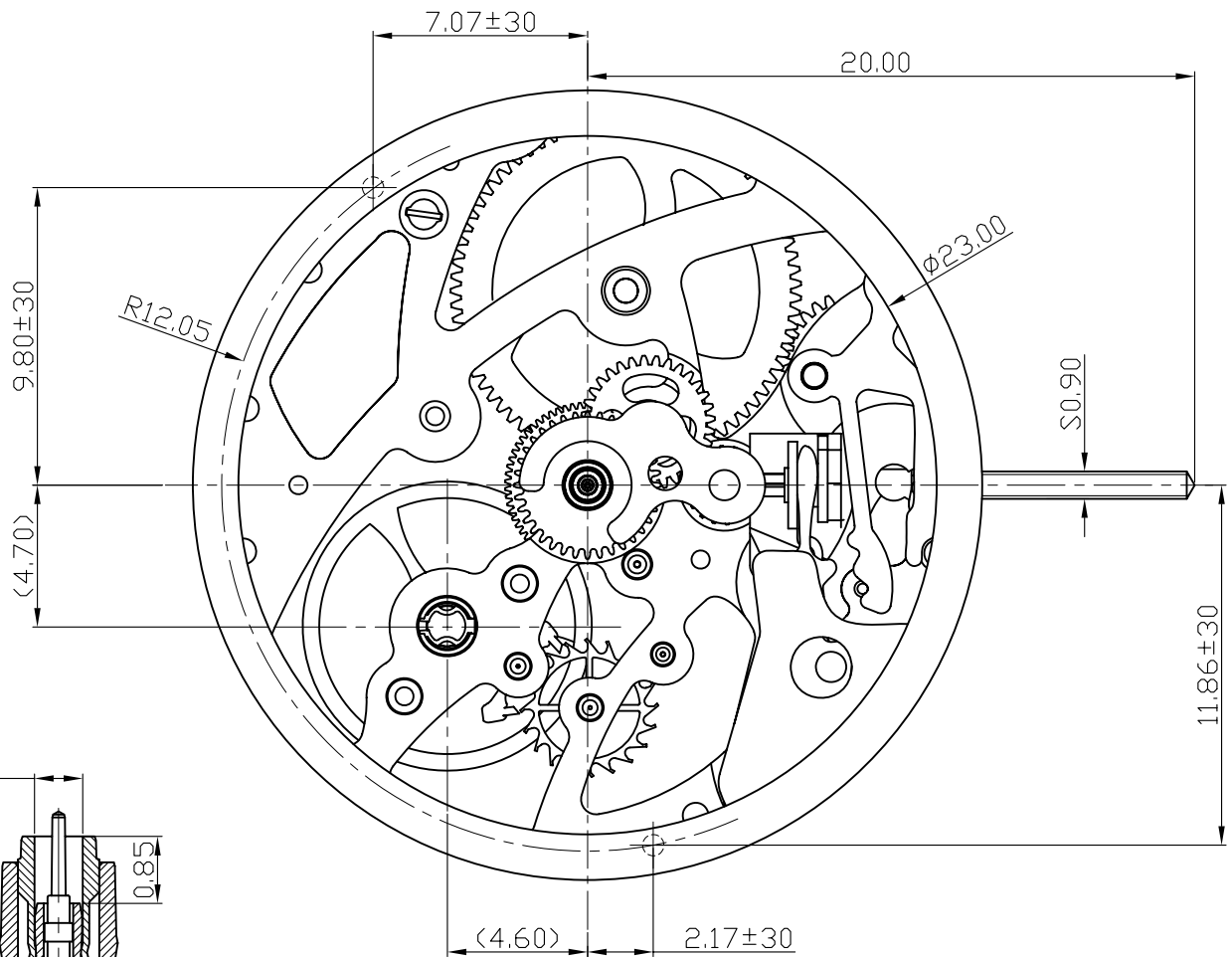
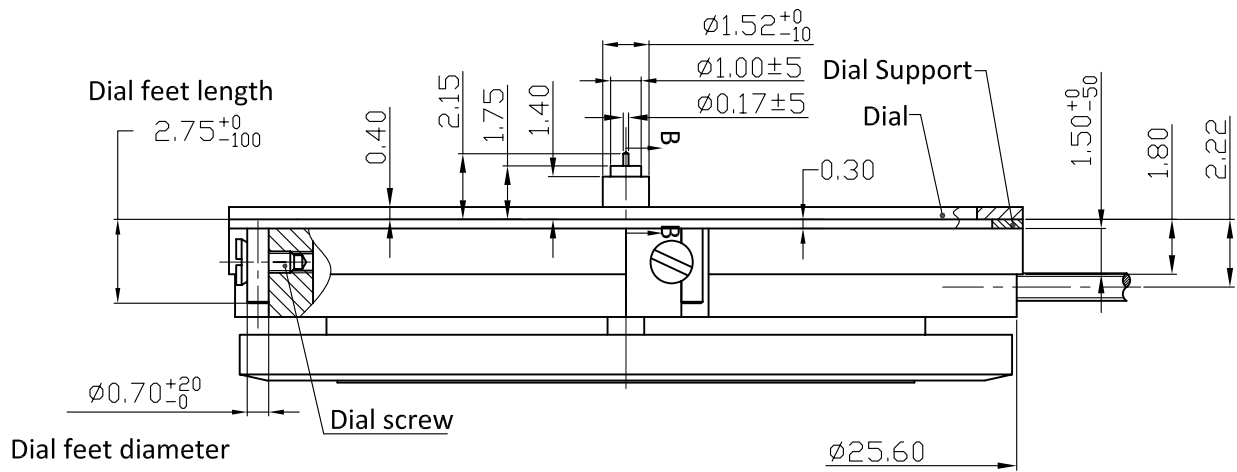
Shape and type	Round caliber, mechanical lever skeletonmovement, self-winding
Frequency	21600A/h
Jewels	24
Overall diameter	26.00mm
Case fitting diameter	25.60mm
Height	5.05mm
Function	Display by means of hands Hours, Minutes and Seconds.
Winding stem	2 positions: 1) Manual winding 2) Time setting
Pusher	without
Stop second	with
Winding with stem	Min. 45turns
With self-winding	18 cycles/min for 1h30min (By Chapuis Machine)

## Assortment

Lift angle	50.4°	
Position	0h	CH, 6H
Average rate		12 ±12s/d
Max deviation all positions		30 s/d
Isochronism (CH)	0h~24h	±20 s/d
Max amplitude (CH)	0h	325°
Min amplitude (6H)	24h	180°
Beat error (CH)	0h	0.8ms
Running time	CH	36hours

### Remark:

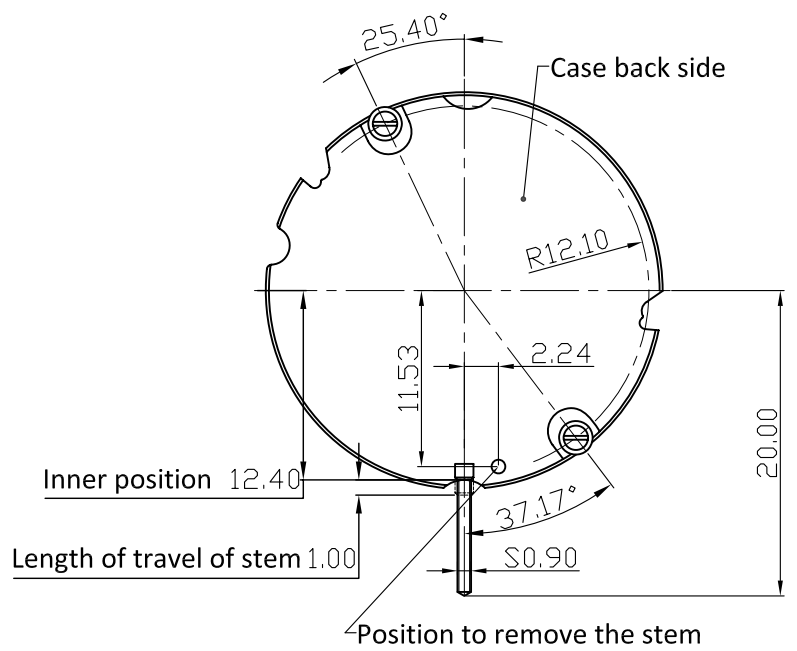
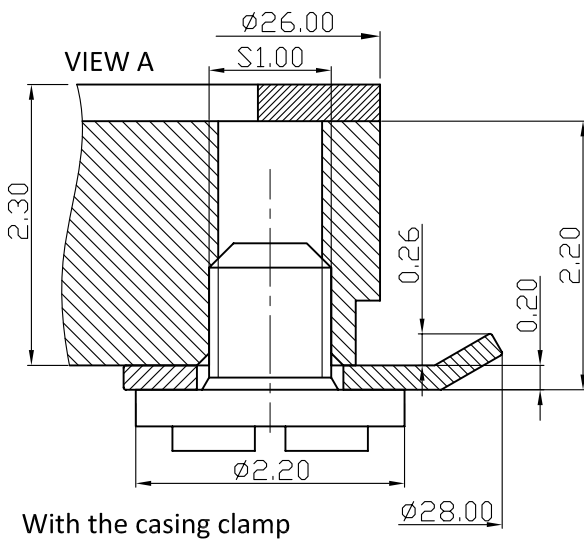
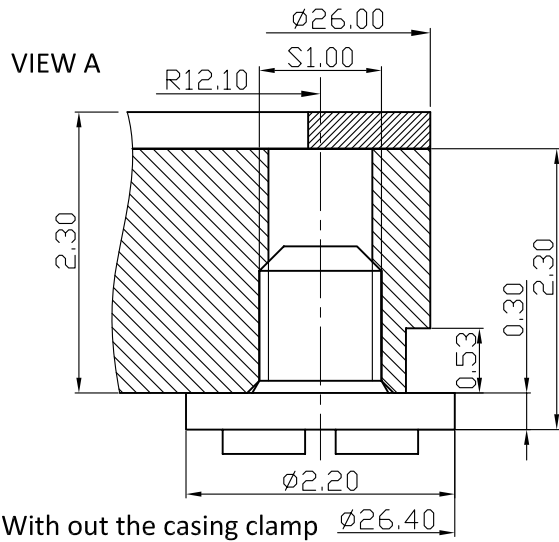
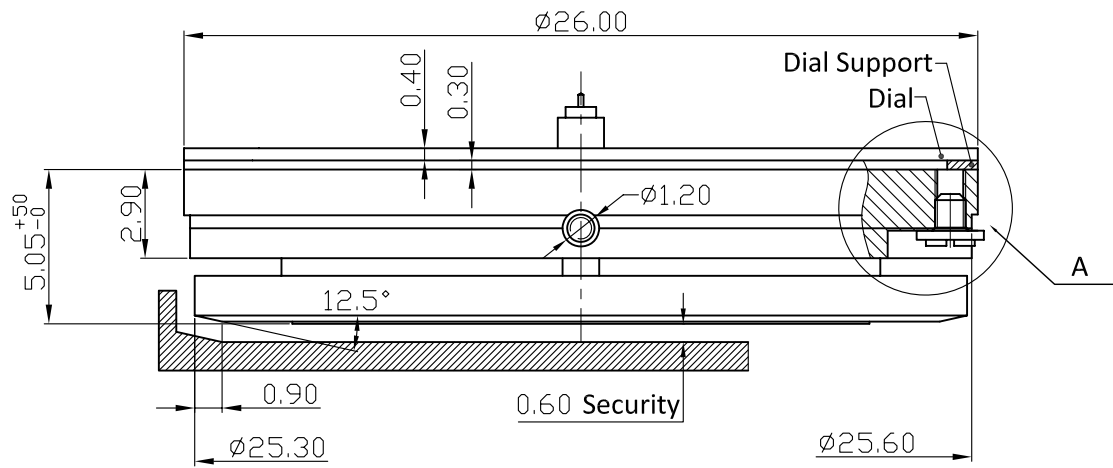
- Different allowance: Middle rate: ±5s/d Amplitude: ±10° Beat error: +0.2ms
- Checking Position:CH- Dial up, FH- Dial down, 3H- 3 Hour up,6H- 6 Hour up, 9H- 9 Hour up, 12H- 12 Hour up



SECTION B-B  
10:1

Min. security between second hand and glass:0.40mm

Modification:	14.01.2015	1.0		Material:	
				Heat treatment:	
Indications for dial				Hardness:	
				Surface treatment:	
S10-SK6-M01			Scale:	Dimension in: mm Tolerance in: $\mu\text{m}$	
				General Tolerance: $\pm 50$	
				Version: 1.0	
<b>STECH</b>	S10-SK6	Created	Controlled	Approved	Page
		14.01.2015 \	14.01.2015 \	14.01.2015 \	1/2



Modification:	14.01.2015	1.0		Material:			
				Heat treatment:			
Frame for case				Hardness:			
				Surface treatment:			
S10-SK6-M01				Scale:	Dimension in: mm Tolerance in: $\mu\text{m}$		
				General Tolerance: $\pm 50$			
				Version: 1.0			
		S10-SK6		Created	Controlled	Approved	Page
				14.01.2015	14.01.2015	14.01.2015	2/2