

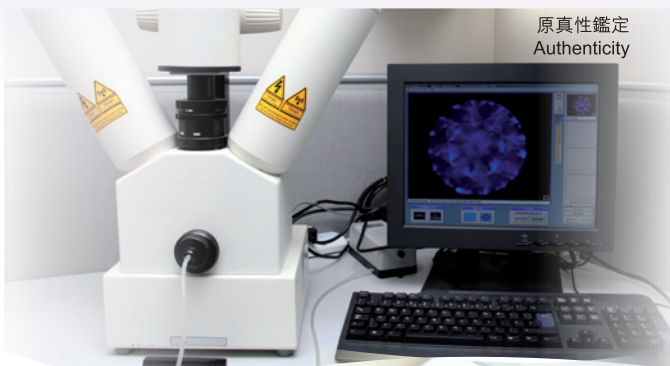
鑽石 DIAMOND



香港獲認可的實驗所按香港寶石學協會有限公司出版的《香港標準鑽石測試方法》進行以下測試：

Accredited laboratories in Hong Kong use the “**Standard Methods for Testing Diamond for Hong Kong**”, formulated by The Gemmological Association of Hong Kong Limited, to conduct the following tests:

- 原真性鑑定 Authenticity
- 重量 Weight Measurement
- 顏色分級 Colour Grading
- 熒光反應 Examination of Fluorescence
- 淨度分級 Clarity Grading
- 形狀與切割、切磨比例與修飾
Shape & Cutting Style, Proportion and Finish Grading
- 圓形鑽石的切割分級
Cut Grading of Round Brilliant Diamond



原真性鑑定
Authenticity



淨度分級
Clarity Grading



熒光反應
Examination of
Fluorescence

實驗所認可 Accreditation of Laboratories

在香港，申請認可資格是公開和自願性質的。獲香港認可處認可的實驗所已達到國際標準 ISO / IEC17025 對管理及技術的要求，以提供高水平的測試服務。

Application for accreditation is open and voluntary in Hong Kong. All HKAS-accredited laboratories meet the management and technical requirements of the international standard, ISO/IEC 17025, to provide high quality testing services.

下列機構提供獲認可的翡翠及/或鑽石測試服務，本名單會在有需要時調整：The laboratories below provide accredited testing services for Fei Cui and/or diamond. The list is subject to revision:

亞洲寶石學院及鑑定所有限公司 Asian Gemmological Institute and Laboratory Limited	2723 0429
中藝(香港)寶石鑑定所有限公司 CAC (Hong Kong) Gems Laboratory Limited	2153 3454
中華珠寶鑑定中心有限公司 China Gems Laboratory Limited	2783 2793
香港寶石研究及鑑定中心有限公司 Hong Kong Gemological Research and Authentication Centre Company Limited	2192 3707
香港寶石鑑定所有限公司 Hong Kong Gems Laboratory Company Limited	2815 1880
香港玉石鑑定中心有限公司 Hong Kong Jade & Stone Laboratory Limited	2388 9688
周大福珠寶金行有限公司 – 周大福翡翠鑑定中心(不會向公眾提供測試服務) Chow Tai Fook Jewellery Co. Ltd. – Chow Tai Fook Fei Cui Testing Centre (do not provide testing service to the public)	

如要了解詳情，請瀏覽香港認可處的網頁：
For more information, please visit the HKAS website at:
www.hkas.gov.hk



香港特別行政區政府於2009年9月成立香港檢測和認證局(HKCTC)，作為諮詢機構，以推動業界發展。該局的願景是將香港發展為區內的檢測和認證中心。

The Government of the Hong Kong Special Administrative Region set up the Hong Kong Council for Testing and Certification (HKCTC), an advisory body, in September 2009 to spearhead the development of the industry. The vision is for Hong Kong to develop into a regional testing and certification hub.

如要了解詳情，請瀏覽香港檢測和認證局的網頁：
For more information, please visit the HKCTC website at:
www.hkctc.gov.hk



如有投訴，消費者可於辦公時間致電：
Consumers may lodge complaints during office hours by calling:
消費者委員會 Consumer Council 2929 2222
香港海關 Hong Kong Customs and Excise Department 2545 6182

香港檢測 · 香港認證
Tested in Hong Kong, Certified in Hong Kong

香港 翡翠及鑽石 測試

Testing of Fei Cui and Diamond
in Hong Kong



HKCTC 香港檢測和認證局
The Hong Kong Council for
Testing and Certification

HKAS 香港認可處
Hong Kong
Accreditation Service

香港實驗所提供的翡翠與鑽石測試服務

Fei Cui and Diamond Testing Services Provided by Hong Kong Laboratories

- 香港實驗所利用科學方法對天然翡翠與鑽石進行測試。
- 香港有著名的國際寶石鑑定所和本地的實驗所，提供專業的寶石測試服務。
- 香港特別行政區政府轄下的香港認可處(HKAS)會按照國際標準ISO/IEC 17025評核實驗所的技術能力及品質管理體系，並給合資格的實驗所發出認可資格。
- 獲認可的實驗所可以對經測試的翡翠與鑽石發出有HKAS認可標誌的測試報告。
- Hong Kong laboratories use scientific methods to determine the authenticity of natural Fei Cui and diamond.
- There are internationally renowned gemstone laboratories and local laboratories in Hong Kong providing professional gemstone testing services.
- Hong Kong Accreditation Service (HKAS) of the Government of the Hong Kong Special Administrative Region assesses the technical competence and quality system of laboratories according to the international standard, ISO/IEC 17025, and provides accreditation to competent laboratories.
- Accredited laboratories may issue endorsed test reports bearing HKAS accreditation symbol for Fei Cui and diamond after test.



商品說明令

Trade Descriptions Order

按《商品說明(提供關於天然翡翠的資料)令》及《商品說明(提供關於鑽石的資料)令》的規定，零售商在售賣天然翡翠或鑽石製品時，須向買家發出發票或收據，告知法令規定的資料包括該製品的說明等。

Under the Trade Descriptions (Provision of Information on Natural Fei Cui) Order and the Trade Descriptions (Provision of Information on Diamond) Order, retailers are required to issue to the buyers invoices or receipts showing, among others, the description of any article of natural Fei Cui or diamond sold in accordance with the Orders.

翡翠 FEI CUI

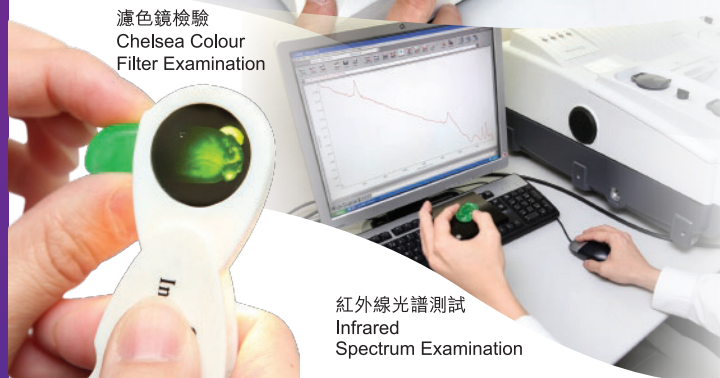
香港的認可實驗所按香港寶石學協會有限公司出版的《香港標準翡翠測試方法》進行以下測試：

Accredited laboratories in Hong Kong use the “**Standard Methods for Testing Fei Cui for Hong Kong**”, formulated by The Gemmological Association of Hong Kong Limited, for conducting the following tests:

- 形狀及琢型 Shape and Cut
- 重量 Weight Measurement
- 尺寸 Measurement of Dimensions
- 透明度 Transparency
- 顏色 Colour
- 偏光度 Polariscope Examination
- 折射率 Determination of Refractive Index
- 比重值 Determination of Specific Gravity
- 熒光性 Examination of Fluorescence
- 濾色鏡檢驗 Chelsea Colour Filter Examination
- 可見光譜 Spectroscopic Examination
- 放大觀察 Examination under Magnification
- 紅外線光譜測試 Infrared Spectrum Examination



偏光度
Polariscope Examination



紅外線光譜測試
Infrared
Spectrum Examination

濾色鏡檢驗
Chelsea Colour
Filter Examination



折射率
Determination of
Refractive Index

翡翠可按測試結果分為四類

Based on test results, Fei Cui can be classified as belonging to one of the following types:

種類 Type

天然翡翠
Natural Fei Cui

經化學處理及注入樹脂翡翠
Chemically treated and resin impregnated
Fei Cui

染色翡翠
Dyed Fei Cui

經化學處理注入樹脂及染色翡翠
Chemically treated, resin impregnated and
dyed Fei Cui